

*essential*

THE UK'S NUMBER 1 FEBRUARY 2015 £4.25

# KITCHEN

## BATHROOM BEDROOM

ESSENTIAL  
GUIDE  
PANTRIES &  
LARDERS

**45**  
pages of  
DREAMY  
SCHEMES

*Design  
destinations*  
IDEAS FOR  
KITCHENS &  
BEDROOMS

SPA  
LUXURY  
Shopping  
for showers

*modern  
romance*

INSPIRING ONLINE SHOPPING  
**THE BEST ON THE WEB**

UNDERFLOOR HEATING | WORKTOPS | REAL HOMES | COOKER HOODS | MONICA GALETTI





CLIVE CHRISTIAN DRESSING ROOM

[clivechristianinteriors.com](http://clivechristianinteriors.com)





## CLIVE CHRISTIAN KITCHEN

[clivechristianinteriors.com](http://clivechristianinteriors.com)



## CLIVE CHRISTIAN STUDY

[clivechristianinteriors.com](http://clivechristianinteriors.com)









*Lyon Shaker Kitchen*



CHARLES  
YORKE

*Kitchens & Living Spaces*

— HANDCRAFTED IN ENGLAND —



01623 756 080  
[www.charlesyorke.com](http://www.charlesyorke.com)







*We Love Curves*

more **curves** | more **features** | more **choice**

for our brochure, visit our website [www.masterclasskitchens.co.uk](http://www.masterclasskitchens.co.uk)





# MASTERCLASS — KITCHENS —

## PREMIER SHOWROOMS

Abingdon	01235 554773	Ingatstone (Brentwood)	01277 350800
Basingstoke	01256 810460	Ipswich	01473 806461
Bristol	01179 246002	Jersey	01534 865750
Cambridge	01223 466634	Lichfield	01543 440020
Carmarthen	01267 220900	Loughton	0208 5081941
Cheshunt	01992 643006	Nefyn	01758 721081
Chelmsford	01245 392792	Seaton	01297 22559
Dyffryn Ardudwy	01341 242015	Sherborne	01935 817111
Eastbourne	01323 642075	St Asaph	01745 582786
Fleetwood	01253 283786	Stratford-Upon-Avon	01789 488899
Gloucester	01452 310451	Swanage	01929 422345
Godalming	01483 424466	Tring	01442 827997
Great Barr	01213 573388	Uttoxeter	01889 565151
Guernsey	01481 242846	Wadebridge	01208 813231
Harrogate	01423 862286	Weymouth	01305 767711
Haverfordwest	01437 763623	Winchester	01962 867540
Hazlemere (Bucks)	01494 718585	Wokingham	0118 9783393
Hereford	01432 279738	Wolverhampton	01902 874200
Horley	01293 786116	York	01904 479792



GREAT BRITISH KITCHENS



Imagine a worktop without restrictions, without limits.  
Dekton has been created without limits, it has an unlimited resistance, an unlimited design.  
You can use it for interior kitchens and even for exterior kitchens or terraces.  
With Dekton you can do everything you want, there are no limits.



KERANIUM TECH Collection

## WHAT IS DEKTON® UNLIMITED ?

Dekton Unlimited is a sophisticated mix of raw materials including glass, last generation ceramic tiles and quartz surfaces.

## WHAT MAKES IT SO UNLIMITED?

- Suitable For Exterior Application (Uv Resistant)
- Large Format Slabs - XXL
- Maximum Resistance to Scratch And Stains
- Maximum Resistance to Fire And Heat
- Low Water Absorption



A product designed by **COSENTINO**

[WWW.DEKTON.COM](http://WWW.DEKTON.COM)

# Welcome

## to the February issue

After spending an overnight in the cool yet cosy design environment of The George hotel in Rye for this issue's **Design Destination** feature (page 142), I thought a lot about how our houses are influenced by the 'mini-break' culture we've all become so accustomed to now. Whether it's the idea of a romantic roll top bath that sits under the light-drenched sash window or a spacious walk-in shower room with warm, fluffy towels and delectable eco products, there's just so much about the hotel and holiday business that informs our bedrooms and bathroom ideas now. And why not? If you can have this level of comfort away from home, there's nothing stopping you recreating it in a domestic setting. From spa experience showers to luxurious heating underfoot, these expectations are explored in our round-up of statement shower schemes in **Spash Out** (page 122) and **10 Things You Need to Know About Underfloor Heating** (page 104). You can also take a glimpse of some very achievable yet clever bedroom schemes in **Inspiring Spaces** (page 142). At The George I stayed in the suite that George Clooney used when filming 'Monuments Men', and if it's good enough for George...

Meanwhile, with spring just around the corner, we start thinking of clearing the air and getting things in order for new season, and one of the places you most likely will want to start with is your kitchen. Larders and pantries are making a huge comeback, and in **Store and Order** (page 82) we look at some of the kitchen companies stepping up to create these new-look sculleries. Think bespoke storage solutions, luxurious finishes, sleek foldaway doors - and that's just for starters. My new-season wishlist is already taking shape, and chief among kitchen additions will be a good extraction system. But where to start? I'm turning to **Clean and Airy** (page 109) for our essential selection of cooker hoods, and you may wish to join me! Enjoy the issue.

*Ciara*

Ciara Elliott  
ACTING EDITOR



82

### Contributors this issue



#### Ben Mostyn

Photographer Ben, based in South West England, has previously worked as a photojournalist in New York, before coming home to work on editorial and commercial assignments. See p.66 for his photos of Henry Swanzy's designs.



#### Yuki Sugiura

Born in Tokyo, London-based photographer Yuki Sugiura specialises in food, interior and travel, and works across the globe. Her favourite place at home is the kitchen and she loves cooking. She shot the Monica Galetti images on p.102.



#### Birgitta Wolfgang Drejer

Birgitta lives in Copenhagen with her husband and two children, Hector and Alba. She has been photographing interiors for over 20 years and recently worked on a stunning new book with Malene Birger. Turn to p.162 for more.





espresso  
live cook sleep

Cesar



# Contents

EKBB FEBRUARY 2015 ISSUE 226

## essential kitchens

- 17 KITCHEN NEWS  
Exciting new products, showroom launches and key diary dates
- 24 MODERN GLAMOUR  
Mixing matt lacquer cabinetry, polished granite worktops and a bronze mirror splashback enhances this family home
- 36 IT'S ALL CHANGE  
In this traditional terrace, a wrap-around island, glazed doors and skylights create a sense of space
- 46 UNDERSTATED ELEGANCE  
This late Victorian farmhouse kitchen boasts a large, quartz-topped island, two dressers and an integrated range cooker
- 56 CROWD PLEASER  
Adding an extension into the garden opens up this entertaining space which has durable surfaces and sleek cabinetry
- 71 ESSENTIAL STYLE  
Use an on-trend blue palette with yellow highlights and geometric prints
- 76 MAKING SHAPES  
Add warmth to a stark scheme with a concrete island using rich wood accents
- 78 SETTING THE TABLE  
Choose your favourite cutlery set from our selection of eye-catching designs
- 80 ON THE SURFACE  
Take your pick from these nine grey worktops for a durable kitchen surface
- 82 STORE AND ORDER  
A look at how larders and pantries are transforming modern-day storage with bespoke and tailor-made options
- 94 KITCHEN INSPIRATION ONLINE  
Our choice of must-visit websites to peruse when furnishing your home



### on the cover

Handleless cabinetry is combined with a touch of glamour in this kitchen by Roundhouse. See page 24.  
PICTURE **DARREN CHUNG**  
■ cover stories



## essential technology

- 100 TECHNOLOGY NEWS  
Let us inspire your shopping choices with the newest home appliances
- 104 UNDERFLOOR HEATING  
Read our 10-point round-up on some essential details to bear in mind if you are looking to add heat to your home
- 108 CLEAN & AIRY  
From ceiling to downdraft and wall-hung, there's the perfect cooker hood for every kitchen design

## essential bathrooms

- 120 BATHROOM NEWS  
Our round-up of the latest bathroom brassware, furniture and lighting
- 122 SPLASH OUT  
Turn here for information and advice on the latest multi-functional designs and technology for luxury showering
- 132 MIXING TASTES  
Coral and blue shades and a roll top bath add interest in a country-style space
- 134 TAKING SHAPE  
Add character with this edit of patterned tiles in inspiring colours and materials

## essential bedrooms

- 139 BEDROOM NEWS  
Our round-up of bedroom storage, rugs, furniture and fabric designs
- 142 DESIGN DESTINATION  
Visit this hotel in the picturesque town of Rye and be inspired by its beautiful and bijoux interior-designed suites
- 146 SIGNS OF SPRING  
A palette of nature-inspired colours and rattan furniture creates an inviting feel
- 148 KEEPING SNUG  
Cosy up by the fire wrapped in one of these sumptuous wool or linen blankets

## essential interviews

- 66 HENRY SWANZY  
An admiration for wood inspires Henry's designs and he tells us why he's also exploring using cast bronze
- 102 MONICA GALETTI  
This chef talks about her favourite food to cook, her training in New Zealand and her go-to kitchen appliance
- 162 MALENE BIRGER  
Danish designer Malene explains her move from fashion into interiors and describes her dream cooking space

## essential regulars

- 93 SUBSCRIPTIONS
- 150 STOCKISTS
- 152 COMPETITION



**EDITOR**  
Charlotte Coward-Williams  
**ACTING EDITOR**  
Ciara Elliott  
**ASSISTANT EDITOR**  
Emma Foale  
**STAFF WRITER**  
Lucy Macdonald  
**SENIOR EDITORIAL ASSISTANT**  
Kirsten Jones  
**DESIGNER**  
Teresa Walker  
**PRODUCTION MANAGER**  
Reg French

**CONTRIBUTORS THIS ISSUE**  
Lis Kasper Bang, Darren Chung, Birgitta Wolfgang Drejer, Hayley Gilbert, Anneli Marinovich, Malcolm Menzies, Ben Mostyn, Lara Sargent, Susan Springate, Yuki Sugira, Amelia Thorpe, Luke White

**ADVERTISING MANAGER**  
Lenka Kourkoumpa  
**SENIOR SALES EXECUTIVE**  
Dean Buckingham  
**NEW BUSINESS**  
Inayah Cooksley  
**CLASSIFIED SALES**  
Victoria Jennings  
**MANAGING DIRECTOR**  
Luke Patten  
**COMMERCIAL DIRECTOR**  
Darren Summerfield  
**FINANCIAL CONTROLLER**  
Lesley Shard  
**SUBSCRIPTIONS** Tel: 01778 392471

**INTERNATIONAL ADVERTISING ENQUIRIES**  
**Burda International**  
Italy Mariolina Siclari  
Tel: +39 02 91 32 34 66  
mariolina.siclari@burda.com

**Burda Community Network**  
**GERMANY** Vanessa Noetzel  
Tel: +49 89 9250 3532  
vanessa.noetzel@burda.com  
Michael Neuwirth  
Tel: +49 89 9250 3629  
michael.neuwirth@burda.com  
**AUSTRIA/SWITZERLAND**  
Goran Vukota  
Tel: +41 44 810 21 46  
goran.vukota@burda.com  
**FRANCE/LUXEMBOURG**  
Marion Badolle-Feick  
Tel: +33 1 72 71 25 24  
marion.badolle-feick@burda.com  
**USA/CANADA/MEXICO**  
Salvatore Zammuto  
Tel: +1 212 884 48 24  
salvatore.zammuto@burda.com

**BurdaInternational**  
The Tower, Phoenix Square,  
Colchester, Essex CO4 9HU  
www.hubertburdamediauk.com  
Tel: 01206 851117 Fax: 01206 849079

Reproduction Essential Repro | Printing Wyndeham Herons | Distribution Marketforce Tel: (020) 3148 3300.

Reproduction in whole or in part without written permission is prohibited. All rights reserved. Dates, information and prices quoted are believed to be correct at time of going to press but are subject to change and no responsibility is accepted for any errors or omissions. Neither the editor nor publisher accept responsibility for any material submitted, whether photographic or otherwise. While we endeavour to ensure that firms and organisations mentioned are reputable, the editor can give no guarantee that they will fulfil their obligations under all circumstances. © Hubert Burda Media UK 2015



# The SMALLBONE SALE NOW ON

smallbone.co.uk 020 7589 5998

© reg design & design right  
Part of the Canburg Group



SMALLBONE  
*of* DEVIZES





# A perfect fit, whatever you're looking for.

At John Lewis you'll find the perfect fitted kitchen to suit your budget.

We have a wide range of styles and appliances to choose from plus an expert fitting service.

**Interest Free Credit** also available when you spend over **£1,000** on fitted kitchens and other selected products.\*



Never Knowingly Undersold  
on quality | on price | on service

John Lewis  
150 years

\*Interest free credit is available on indoor and outdoor furniture, floor coverings, fitted bedrooms, fitted bathrooms and fitted kitchens including large home appliances which are being fitted in your new kitchen. Excludes Nursery furniture. Subject to status, terms and conditions apply. 0% APR representative. Acceptance subject to status. Authorised and regulated by the Financial Conduct Authority. Visit [johnlewis.com/interestfreecredit](http://johnlewis.com/interestfreecredit) for more details. Our commitment to value means that we match the prices of high street competitors (this excludes online-only or mail order businesses). Service conditions must be comparable. See our 'Never Knowingly Undersold' leaflet in our shops or online for details.

# Kitchens

POLISHED  
TO SHINE

***A milky marble  
worktop serves as a  
refreshing backdrop  
for your rustic,  
handmade ceramics***

Nordic Sea crockery, from £7 for a side plate; Tvis stainless steel gold cutlery, £159 for four place settings; Napkins, £7 each; Zola wooden chopping board, £45.25; Marble vase, £42, all Broste Copenhagen



KITCHEN NEWS • HENRY SWANZY • INSPIRING DESIGN IDEAS



**JANUARY SALE NOW ON**



**sola\*kitchens**  
bespoke swedish interiors

121 Munster Road, London, SW6 6DH

020 3004 0898

[www.solakitchens.com](http://www.solakitchens.com)



# Kitchen News

*The latest launches and inspiration-packed events*

WRITTEN BY EMMA FOALE



## GORGEOUS IN GREY

Modern and traditional styles meet in the middle with the Original Hand-painted collection by bespoke kitchen cabinet makers Smallbone. A palette of soft greys has been added to this collection, using the latest Mylands 'Colours of London' paint range. These shades are inspired by a rich cultural heritage, from the Georgian times up until the present day. Kitchens start from £40,000. [smallbone.co.uk](http://smallbone.co.uk)

## Handle THE HEAT

For a place to put hot pots and pans down, these marble trivets are handy to keep nearby. By Norwegian designer Hallgeir Holmsvedt, each one has linear grooves carved into it to add interest to this everyday object. They're £35 each. [muuto.com](http://muuto.com).



## Happy Returns

This year Holloways of Ludlow are celebrating their 30th anniversary and opening a 7th UK showroom to mark the occasion. 'Holloways Period House Shop', set up by Mark Holloway and his brother Simon is due to open in the spring and will be located in Corve Street, Ludlow, Shropshire. [hollowaysofludlow.com](http://hollowaysofludlow.com)



## SERVING UP

Enjoy the work of traditionally skilled artisans with this new range of tableware and serving utensils from Nkuku. Made from sustainably sourced mango wood, there's a whole range including everything from a ladle, pizza board and platters to salad servers and a Pachai pestle and mortar. We like how the simplicity in the designs lets the natural beauty of the wood speak for itself. [nkuku.com](http://nkuku.com)

## Pull up a stool

With its shapely turned legs, we love the 102 Stools by alp. Standing at 44cm, they're a nice height for bench seating or you could use them side tables. They have been designed by Annick Petersen and come in a choice of Oak or Oak and Grey. £175 each. [shoptent.co.uk](http://shoptent.co.uk)





**HARVEY JONES**  
KITCHENS

January  
**Sale**  
Now On  
[harveyjones.com](http://harveyjones.com)



BATH BATTERSEA BOURNEMOUTH BRENTWOOD BRISTOL CAMBRIDGE CARDIFF CHELTENHAM  
CHESTER CHICHESTER CHISLEHURST EDINBURGH FULHAM GLASGOW GUILDFORD HAMPSTEAD  
HARROGATE HOVE ISLINGTON LEAMINGTON SPA MARLOW MILTON KEYNES NOTTINGHAM  
NOTTINGHILL OXFORD SHEEN ST. ALBANS TUNBRIDGE WELLS WILMSLOW WINCHESTER WORCESTER

Call now for your free brochure:  
**Tel: 0800 032 6485**  
[www.harveyjones.com](http://www.harveyjones.com)





## POLISHED FINISH

Originally in natural oak, the Blub pendant lamp is now available in Calacatta marble too. The Blub 3, a creation of Deevie Vermetten for design studio Fermetti, takes a strong aesthetic from Tuscan artisanal tradition. The marble gives this pendant a statuesque appearance that makes it an ideal feature piece for your dining area. It's from around £519. [ex-t.com](http://ex-t.com).



## Clever ILLUSION

Combining innovation with great design, there's a lot to get excited about with the Float kitchen by Modulnova. The cabinetry looks attractive in raw oak and the durable Pietra Piasentina stone work surface is suspended on the base of the kitchen – this makes it appear to float like a wing. This kitchen is available in the UK from DesignSpaceLondon, prices start from £25,000. [designspacelondon.com](http://designspacelondon.com).

## IT'S A WINNER

Alexis is the name of the latest tile from Bert & May, the first from the spring/summer collection. Its linear and monochrome design catches the eye and looks impressive as a floor covering. It's the design of talented competition winner and 21 year-old Alexis Wharfe who's a graduate of architecture. It's £225 per metre. [bertandmay.com](http://bertandmay.com).



## Shelf life

When it comes to shelving, we particularly love a display cabinet. You can keep your favourite crockery and glassware safely stored inside or on display. Ideal for a dining space or kitchen, this retro cabinet in rich walnut has a mid-century modern feel in shape and style. It's £3,200. [wharfside.co.uk](http://wharfside.co.uk).



## NEW HEIGHTS

The Rise & Fall School light is the first adjustable pendant light from Davey Lighting, with a counterweight and pulley system. Depending on whether you simply want to light the room or if you need direct spot light above a prep area, these are ideal. The spun metal shade comes in a choice of either polished or weathered copper, green or putty grey with white or polished copper interior. From £189 each. [davey-lighting.co.uk](http://davey-lighting.co.uk).







as individual as you are...



Kitchens | Bedrooms | Bathrooms | Studies | Living Rooms | Full Project Management

Est. 1985  
Handmade in England



Tel: 01296 468143

[www.simon-taylor.co.uk](http://www.simon-taylor.co.uk)

Contact us to visit our stunning Showroom and Workshop: Cane End Lane, Bierton, Aylesbury, Buckinghamshire HP22 5BH

## WASTE NOT WANT NOT

This is Silo – the UK's first zero-waste restaurant based in Brighton. The interior was designed by husband and wife team Baines & Fricker, who are eco-conscious and believe in creating things that will last. Hence why they repurposed old school tables and office floor insulation to make bench seating and tables. There's a very good feeling about this place, so make sure you pop in if you're passing by. [bainesandfricker.net](http://bainesandfricker.net) and [silobrighton.com](http://silobrighton.com).



## Seriously **STRIPEY**

Do you want to create an interesting splashback? Take a look at these Grosvenor ceramic tiles which are available in four designs inspired by men's shirt stripes. They're shown here in blue and white but you can also choose from other colours on request. From £18 per tile. [parisceramics.com](http://parisceramics.com).

Helping you plan your next kitchen down to the details, SieMatic has just revealed its latest kitchen planning concepts. A new door style which is available in various finishes, offers a signature raised 6.5mm edge and a minimalist line with different handle options. The S2-R option is handleless with a recessed grip slot, and the SE3003 option offers two handle types. SieMatic kitchens with SE3003 and S2-R components start from £20,000. [siematic.co.uk](http://siematic.co.uk).

## FLAWLESS LOOKS



## Touch WOOD

If an upholstered style isn't what you're after, why not go for something simple in wood? The LE1 dining chair by Tanti Design is made from English sustainably sourced timbers in ash or oak. Contrasting woods for the seat and legs can create a characterful look. It's finished by hand and treated with a hardwax oil for a low lustre finish. £385. [clippings.com](http://clippings.com).





## DIARY DATES

### **The Listed Property Show**

If you're looking to maintain or refurbish your listed property, a visit to this show will provide you with practical advice and tips. Plenty of accessible information means that in one day you can check off a lot of questions and research that are usually quite time consuming.

Entry to the show is free for **EKBB** readers when applied for in advance; get your free invitation now from [lpoc.co.uk/property-show/tickets](http://lpoc.co.uk/property-show/tickets) or email [info@lpoc.co.uk](mailto:info@lpoc.co.uk). Alternatively call 01795 844939. [lpoc.co.uk](http://lpoc.co.uk).

**WHEN?** 14 - 15 February

**WHERE?** Olympia, Hammersmith Road, London, W14 8UX

**EKBB  
OFFER**



### **Fairtrade Fair 2015**

Traidcraft, the UK's leading fairtrade organisation, is asking us to all get behind the fairtrade movement this year. Since the first Fairtrade Fortnight in 1995, the Fairtrade mark has become the biggest and best known ethical label in the UK. You can find out more about how to make a difference and see what events are happening near where you live online at [fairtrade.org.uk](http://fairtrade.org.uk).

**WHEN?** 23rd February - 8th March



### **The Antiques & Fine Art Fair at The Mere**

Based in the North West of the UK, this beautiful golf and leisure facility hosts this annual, three-day vetted fair. Displays include period town and country furniture, sculpture, traditional and modern paintings, glass and mirrors amongst much more. [merefair.com](http://merefair.com).

**WHEN?** 30th January - 1st February

**WHERE?** The Mere Golf Resort & Spa, Chester Road, Mere, Knutsford, Cheshire WA16 6LJ



## Treasured FINDS

Sourcing furniture and accessories from far and wide, the team behind Atkin & Thyme find pieces from well-skilled artisans. The Barcelona six-seater dining table, £498, is one of our favourites. It has a polished concrete moulded table with metal topped mango wood legs. It's shown here with the Shoreditch ceiling pendant in ivory, £89, and Isometric Cowhide rug, £298. [atkinandthyme.co.uk](http://atkinandthyme.co.uk).

## Back to NATURE

For walls or floors, the new bamboo marquetry tiles from De Ferranti are available in eight designs. They're handcarved with decorative detailing highlighted by black resin grout. Bespoke sizes are available and prices are from £820 per sq. m. [deferranti.com](http://deferranti.com).



## MADE OF STONE

With a beautiful, all-over grey glaze, the Neu stoneware collection catches the eye. There's a cup, platter, pitcher and bowl in the range and each of the designs with geometric edges has been inspired by Bauhaus modernist classics. Prices start from £15 for the cup. [fermliving.com](http://fermliving.com).

## NEW FLAGSHIP

Notting Hill is fast becoming a popular design district and it's now home to the Martin Moore flagship London showroom. It showcases the best of handmade English cabinetry, including the Classic kitchen (shown) with natural marble and granite tops. Kitchens start from £35,000. [martinmoore.com](http://martinmoore.com).





YOU ARE WHAT YOU BREATHE

COOKER HOODS  
FOR CONTEMPORARY  
KITCHENS

**DIVA**, DESIGN FABRIZIO CRISÀ  
elica.co.uk | f | t | i

 **elica**  
aria nuova



## REFLECTED GLORY

Natural light from the new orangery extension floods into the kitchen, reflecting the polished granite and bronze mirror splashback to increase the spacious and inviting feel of the room



# MODERN *Glamour*

Tracy and Mark Cooper have created an inviting kitchen with a modern mix of materials – and just a touch of sophisticated sparkle

PICTURES DARREN CHUNG | WORDS AMELIA THORPE

With four children and a puppy – not to mention two rabbits in the garden and a horse in the paddock – life in the Cooper household is a busy one. And, after moving into their Oxfordshire home four years ago, full-time mum Tracy and husband Mark, who runs a chain of estate agencies, decided that the kitchen just wasn't big enough for family life. 'Wherever

I am in the house – which is usually the kitchen – my entourage follows,' laughs Tracy of children, Amber-Rose, 16, Miya, 12, Joe, eight, and Charlie, four.

Having worked their way through the house, updating the décor in every room, Tracy and Mark arrived at the kitchen. 'We decided to add an orangery extension across the rear to create a much larger room, with space for cooking, eating and relaxing,' explains Tracy. 'It was to work well for family time during the day, but I wanted it to be elegant too – somewhere we could dim the lights, put candles on the table and sit down to a relaxed dinner in the evening.'

Tracy's plans began with an AGA, something she says she'd always wanted. 'It makes the warm heart of a home,' she explains. 'Although traditional, I liked the idea of including it in a modern kitchen to create a blend of old and new.'

Then, while she and Mark were away for a weekend, they spotted a Roundhouse showroom which looked appealing and decided to take a look around. 'I fell in love with the clean-lined designs and felt comfortable that the designers here could create furniture which was modern, but not clinical – something with some warmth and elegance,' explains Tracy of her choice.

While the handleless furniture is finished in matt grey and off-white for a cool contemporary look, warmth comes from the dark stained and polished oak floor and bronze splashback. And the finishing touch? Some hand-blown glass chandeliers. 'I do like a little bling,' laughs Tracy. 'Some pretty sparkle lifts the room, and transforms it from a multi-functional family space during the day into a glamorous area in the evening, just perfect for entertaining.' **EKBB**



## HOT STUFF

The three-oven cast iron AGA cooker includes roasting, simmering and baking ovens, plus two hotplates. Tracy's cooker also features the AGA Intelligent Management System (AIMS) which allows her to programme the cooker to come on when she needs it

*'I like the idea of a traditional AGA in a modern kitchen to blend old and new'*



#### TOP DRAWER

The Fisher & Paykel CoolDrawer is housed in the island with drawers designed to match perfectly for a symmetrical finish



## TO THE BAR

Bar stools tuck under the overhanging countertop on two sides of the island, with a wine fridge accessible from the dining and living zones without disturbing the cook





### ***Kitchen profile***

Urbo matt lacquer cabinetry is finished in gentle tones of off-white and mid-grey, with handrails to match. The streamlined look is accentuated by crisp-cut worktops of polished Nero Absolute granite, while a bronze mirror splashback and dark stained oak flooring add warmth. Hand-blown glass chandeliers are the sparkling finishing touches.

#### **ROUNDHOUSE**

11 Wigmore Street, London, W1U 1PE.  
Tel 020 7297 6220. [roundhousedesign.com](http://roundhousedesign.com)  
Kitchen prices from £35,000.







IN THE DETAIL

The sleek look is accentuated with the use of dark polished Nero Absolute granite for the worktops







## SHADES OF GREY

Tracy used the same tones as the kitchen to create a sense of continuity in the soft seating area



**JIM MCCABE**  
SENIOR DESIGNER,  
ROUNDHOUSE FULHAM

### How did you begin when first approaching the project? What way did you envision the layout?

We began by positioning the appliances, because that tends to dictate the best layout. Tracy had already chosen the AGA and, because she wanted to be able to cook well when the AGA is turned off or simply when she needs extra oven and hob capacity, she also chose a range of Miele appliances. Here, there was only one solid wall for the tall cabinets to house the fridge and freezer, ovens and coffee machine at eye level. Then the sink could be positioned under the window, which is not far from the AGA. The island makes the main preparation zone and the sociable hub of the room. With its bar area for friends and family to perch on while Tracy is cooking, this is the perfect place to pull up a stool and have a catch-up.

### Can you tell us about the design of the cabinetry?

Tracy and Mark liked the contrast of the contemporary, handleless cabinetry against the traditional styling of the AGA. We used an off-white for the base and tall cabinets, and a mid-tone grey to 'ground' the island and introduce some definition. The finish is matt, chosen because it has a softer look than gloss and suits the modern-meets-traditional mood of this room.

**What finishing touches did you use to complete the design?** To avoid a heavy look, we chose not to include wall cupboards above the sink run. Instead, a simple shelf, painted to match the base cabinets, creates a minimalist finish. The bronze mirror splashback adds a hint of glamour, bouncing a golden light back into the room to boost its warm appeal.

Q&A

## DARK AND HANDSOME

The oak flooring is finished with a dark stain and polish to create contrast with the grey matt lacquer island







*'I wanted it to be somewhere we could  
dim the lights, put candles on the table  
and sit down to a relaxed dinner'*



*'I do like a bit of bling. Some pretty sparkle lifts the room and transforms it from a family space'*

#### GLASS ACT

Antiqued glass, mirror and a metallic wallpaper add glamour to the dining area



## Stockists

### APPLIANCES

Three-oven electric **AGA** in Black with AIMS, £9,495, AGA. Similar models: H6260 B **oven**, £1,249; DG6400 **steam oven**, £1,649; CVA 6401 **coffee machine**, £2,499; ESW 6214 **warming drawer**, £899; KM 6118 **induction hob**, £1,325; K37272 iD **integrated fridge**, £1,450; FNS 35402 I **integrated freezer**, £1,775; KWT 6321 UG built-under **wine cooler**, £2,100, all Miele. RB90S64MKIW1 2128 CoolDrawer **integrated fridge**, £1,749, Fisher & Paykel. SN65M031GB fully integrated **dishwasher**, £454, Siemens. Stratus Compact ceiling **extractor**, from £2,543, Westin Design.

### FIXTURES AND FURNISHINGS

FilterFlow Olympus **tap**, £632; Sirius Tectonite SID 110-50 CBK undermounted **sink**, £278, and SID 110-16, £168, all Franke. Design **boiling water tap** in chrome, £890, Quooker. Nero Absolute granite **worktops**, £7,600; Bronze mirror **splashback**, £1,000, all Roundhouse. Solid Glass Orb **chandeliers**, £350 each, The White Company. Bespoke dark stained and polished oak **flooring**, priced to order, Upton Wood Flooring. CLP Newport **bar stools**, £124 each, Amazon. Linnell **sofa**, from £2,530; Pablo ottoman, from £1,570; **Cushions and throws**, from a selection, all The Sofa & Chair Company. **Wall lights, table lamp**, from a selection, John Lewis. Kashgar Graphite P619/06 **wallpaper**, £55 per 10m roll, Designers Guild. Cherbourg Antiqued Glass **sideboard**, £973; Similar mirror, from a selection, both Sweetpea & Willow.

FOR STOCKISTS, SEE PAGE 150



# Sale

NOW IS THE TIME

- KITCHENS
- BEDROOMS
- DRESSING ROOMS
- STUDIES

The New England Kitchen © Copyright & Design Right Mark Wilkinson Furniture

For details, a complimentary brochure  
or to arrange a design consultation  
01380 850 007 or [www.mwf.com](http://www.mwf.com)

Unmistakably  
Mark Wilkinson

Part of the Canburg Group





## COOL CONTRAST

The pure white of the Metro wall tiles and marble worktops is contrasted by the contemporary Railings 31 shade from Farrow & Ball that the cabinetry is painted in

## WRAP PARTY

The Carrara marble wrap-around on the island makes a statement in this formal dining area. Designer Jamie has created a functional working space that means everything is within easy reach

# IT'S ALL *Change*

From the outside this terrace still holds on to its Victorian appearance, but inside there's a whole new space to discover

PICTURES MALCOLM MENZIES | WORDS EMMA FOALE





## ISLAND LIVING

'The client's brief was for something classic, simple and fresh that wouldn't date,' Jamie says. The handleless design and minimal amount of wall cabinets ensure that the kitchen seamlessly blends into the living space

**G**oing, going, gone... This traditional Victorian terrace was sold at auction to an international family and designed 'from the rubble up' as Jamie Blake, director and designer at Blakes London describes. Its dilapidated state meant a complete rebuild was needed, so the entire house was knocked down except the front façade, which now serves as a sympathetic reminder of the history and character of this period property.

Jamie's challenge was to work within the tight proportions and long, narrow corridors of the terraced house so typical of its era. He did this by making full use of the large glazed doors and skylights which let natural light in all year round. The kitchen and outdoor space feel like one, with the small and fully decked garden adding a view that the owners can enjoy without having to give it a lot of attention.

The library with bespoke shelving, for displaying books and ornaments, breaks the living and dining spaces. Jamie explains that 'it creates a feature, as this is the first impression you get as you enter the house. We created a wider entrance from the foyer to the front room and then in through the casual office and into the kitchen. I wanted this to be the desired entrance as in classic Victorian terraces the way into the kitchen is narrow, almost like a service entrance, but a grander entrance that pulls not only the eye but the person through the front room to the kitchen.'

'Classic, simple and fresh' was the brief the owners asked Jamie to fulfill and the colour scheme was chosen on this basis. The couple enjoy entertaining and cooking, hence the design is easy on the eye and combines beautiful finishes that are practical and work well to blend the kitchen with the living space. According to Jamie, the space was still lacking 'something special' which resulted in the design of the marble wrap-around island. As the statement piece that was needed to transform this sophisticated space into a sociable and functional place to cook and dine, it was the perfect solution. **EKBB**

## *Kitchen profile*

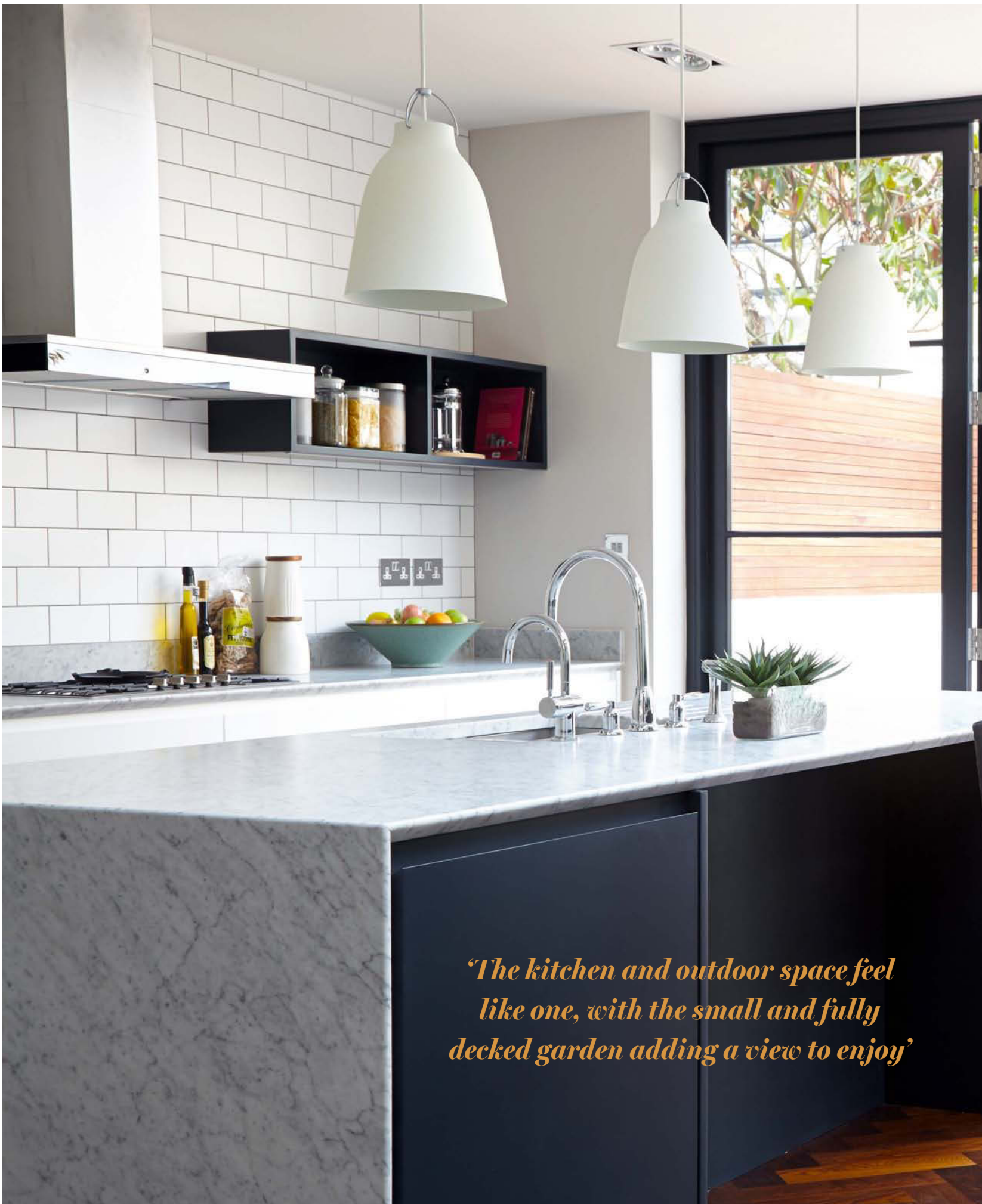
A Victorian terrace with a contemporary interior design features handleless cabinetry which is softened by the natural Carrara marble worktops. Walnut veneered cabinet interiors as well as solid walnut feature drawers and shelves add ample storage without compromising on the sleek feel.

### **BLAKES LONDON**

5 Square Rigger Row, London, SW11 3TZ.  
Tel 07834 512 155. [blakeslondon.com](http://blakeslondon.com)  
Kitchens start from £25,000.







*‘The kitchen and outdoor space feel like one, with the small and fully decked garden adding a view to enjoy’*

# OPEN VIEW

Linking indoors and out, the large bi-fold doors emphasise the size of the room and allow as much light in as possible. 'Although the garden is small and fully decked, the entire space now feels cohesive. As opposed to a reasonable size kitchen and a small garden,' Jamie explains







## FIRST IMPRESSIONS

As you enter the house you look straight onto the library and into the front room. You pass through the casual office and into the kitchen, in keeping with a traditional feel of a 'service entrance' in a Victorian property

*‘The library breaks the living and dining spaces. It creates a feature, as this is the first impression you get when you enter the house’*



## ON DISPLAY

Built-in bookshelving was made bespoke by Blakes of London and painted to match the colour scheme of the kitchen island

## A PLACE TO THINK

A quiet space has been created for an integrated desk and a Philippe Starck Ghost chair. Here is where the telephone is kept and where the owners can answer a quick email



**JAMIE BLAKE**  
DIRECTOR,  
BLAKES LONDON

*Q&A*

**How did you create the layout?** With Victorian homes you only really have a few options of layouts. After you fit in the appliances – and in this case we needed to fulfill the needs of a family of five – you then have to work very well with the remaining space. In the brief, the clients told me they wanted a social area, therefore an island was key. The rest slotted in place around that.

**What challenges, if any, did you come across and how**

## did you overcome them?

The biggest challenge in all Victorian terraces in London is trying to fit in everything that the client wants. With a project like this it is good for the designer to get involved at concept stage because if something doesn't fit you can make it fit! For this project I was involved from the build stage.

**How did the architecture of the building influence your design?** A Victorian layout always has a heavy influence

on a kitchen, the narrow/long building resulting in most kitchens being laid out as is. With the use of huge glazed doors and skylights this has resulted in a specially lit space with natural light all year round.

## What is the key to the success of this design?

The fact that it fits beautifully in the space and marries well with the outside and lounge areas. This results in a feature room, as well as a functional kitchen and a terrace space.



## Stockists

### APPLIANCES AND FIXTURES

**Ovens, hob and extractor**, all Miele.

**Fridge-freezer**, Fisher & Paykel. Callisto **tap** in chrome with rinse, lever handles and 'C' spout, from £601, Perrin & Rowe.

**Sinks**, from a selection, Franke. **Worktops** in Carrara marble, price on application, supplied by Blakes London. Metro flat white **wall tiles**, from around £18 per sq. m, Tons of Tiles. **Spot lighting**, price on application, LEDs - C4.

### FURNITURE AND ACCESSORIES

**Dining table and chairs**, Andrew Martin.

**Mirror and coffee table**, bespoke made, commissioned sourced piece by BB Design House. Built-in **bookcase**, bespoke made by Blakes London. Philippe Starck Style Ghost **chair** (at desk area) in clear plastic, £64.99, MDM Furniture.

**Sofas**, from a selection, Sofa Workshop. Carravagio **pendant lighting** by Light Years (above island), from £123 each, Skandium. **Lamp** (in living area), Chelsea Design Centre. Glass **doors**, bespoke by Cedar Bi-Folds. Solid oak parquet **flooring**, supplied by Mascot Bespoke Homes (bespoke building company and the company who built the entire home).

**Wall art**, Mark Rothko print, bought online and framed privately. Handmade **rug**, from a selection, The Rug Company.

**Architect** Design ACB

01256 411 450. designacb.com

FOR STOCKISTS, SEE PAGE 150

### LAIID-BACK STYLE

Upon entering the living space, you get a wonderful sense of the owners' love of art and ornaments. The large coffee table and mirror were commissioned and made bespoke by BB Design House



## WE'RE GIVING AWAY A FREE SINK CABINET...

Worth up to £975 when you spend £8,000 or more on any of our kitchens.

All you have to do is choose the style, colour and what accessories to combine it with - take a look at [neptune.com](http://neptune.com)

\*Free sink base cabinet offer closes 31st January 2015. For full details please ask in-store or visit [neptune.com/offers](http://neptune.com/offers)

*N*  
NEPTUNE





## CREATIVE IDEAS

The central island, measuring 3x1.5m, is topped in a seamless slab of quartz and has been designed to be a statement piece

# *Understated Elegance*

Wendy and Richard Coney created a calm space at the centre of their busy home, teaming stylish design and contemporary touches

PICTURES DARREN CHUNG | WORDS AMELIA THORPE







**L**ife in the Coney family household in Lincolnshire is a busy one. While Wendy runs a structural steel business (and fits in her role as the first ever female president of the British Constructional Steelwork Association), husband Richard manages the family farm, rearing sheep and cattle and growing cereals. Together they also have a group of luxury self-catering cottages and meeting rooms which have been converted from the old farm buildings. And in between all that, they enjoy their family life with children, Hattie and Richard, aided and abetted by their two dogs, Chester and Poppy, as well as a couple of cats, a few horses and a Sheepdog, Davy, who prefers to live in the great outdoors.

So it's no wonder that their home, as somewhere to relax and unwind, is so important. 'Over the years, we have gradually turned the house from a rather gloomy series of dark rooms into a home that suits us,' explains Wendy of the late Victorian farmhouse where they live. Chief among the rooms requiring some attention has been the kitchen, which forms the heart of their home. 'We operate very much an open-house

policy,' smiles Wendy, 'so friends and colleagues often pop in for coffee or to go through some papers, and we usually tend to head over to the kitchen.'

Wanting to create a more open and spacious feel, Wendy and Richard decided to join the kitchen and dining rooms together, and open a new vista to the adjacent conservatory. While it was easy to choose their kitchen designer, because Martin Holliday of Chiselwood produced his first furniture pieces for their home 20 years ago, Wendy admits that she found it less straightforward this time to describe what she wanted. 'Beyond saying that I wanted something light with a modern feel, I left it very much to Martin,' she says. 'But one of Martin's strengths is his presentation skills – he is a real artist, producing the most beautiful drawings so that I could see exactly what he had in mind.'

Wendy also drew on the advice of friend and interior designer, Irena Murray, to help her plan the structural changes and their link to the conservatory and garden, and of AGA-expert Rosemary Leech to help choose the model that was most suited to her needs. 'They all helped me create a space that works perfectly for our family,' says Wendy, with satisfaction. 'It really is a lovely place to relax.' **EKBB**

## CRÈME DE LA CRÈME

**Top left** The Georgian-style dresser was designed and built by Chiselwood. It is painted in Latte, from the Chiselwood Paint Collection

## ATTENTION TO DETAIL

**Top right** The other dresser is lined in oak, with pocket doors that slide away to allow easy access to the built-in coffee machine and microwave



**TIME OUT**

An internal wall between the kitchen and dining areas was taken down to create a new opening to the adjacent conservatory



## EASY ACCESS

The Double DishDrawer is located close to the dresser, so that it's easy to wash coffee cups and breakfast crockery

*'We have gradually turned the house from a rather gloomy series of dark rooms into a home that suits us'*





#### CLUTCH CONTROL

The Kohler Karbon articulating kitchen mixer tap has five patented pivot points to maximise manoeuvrability, with deck-mounted joystick control

### *Kitchen profile*

Bespoke furniture, produced in Chiselwood's Lincoln workshop, has been hand-painted in Root Ginger from the Chiselwood Paint Collection. It teams classic, framed elegance with modern lines, and is finished with chrome Ship handles, worktops of Silestone Helix quartz and integrated Silestone sinks for a seamless finish. A five-oven AGA Total Control creates the inviting focal point of the room, which has been framed by a classic French overmantel.

#### CHISELWOOD

Fosdyke House, Saxilby, Lincoln, LN1 2JH.

Tel 01522 704446. [chiselwood.co.uk](http://chiselwood.co.uk)

Kitchen prices start from £35,000.



#### DOG'S LIFE

Poppy, the Dalmatian finds a soft quiet spot to lie down





*‘We developed a modern play on a traditional Edwardian downstairs kitchen look to create a kind of contemporary-classic style’*

#### USEFUL DETAILS

Oak trays, with handles to match the cabinetry, slide into their bespoke purpose-built slots

#### MIXED MATERIALS

Silestone Helix worktops replicate the beauty of natural marble, but with the durability and non-porosity of quartz, ideal for a busy kitchen



**MARTIN HOLLIDAY**  
FOUNDER AND  
DESIGN DIRECTOR,  
CHISELWOOD

Q&A

#### How did you conceive the cabinetry design?

We developed a modern play on a traditional Edwardian ‘downstairs kitchen’ look to create a kind of contemporary-classic style that we all felt would suit the age of the house. The drawers and doors feature quite a chunky frame to suit the proportions of the large room, and there is a vertical moulded detail between each cabinet to create a smart finish. The breakfast dresser cupboard has an over-hanging cornice and

stepped back, glazed side cabinets with Gooseberry-painted interiors to complete the sense of simple elegance.

#### Can you tell us about how you integrated the AGA?

To make the AGA the focal point of the room, we created a faux chimney breast with classic French overmantel. As well as catching the eye, it also conceals the extractor. To finish the design, we added a panel of mirror to reflect light, and a high quartz splashback to the height of the AGA lids.

#### Lastly, how did you design the island?

At just over 3x1.5m, the island is a statement piece and deliberately so, both to suit the proportions of the room and to seat at least four bar stools. It’s about as big as it possibly could be, given that we wanted to top it in one seamless slab of quartz for the cleanest finish, and that actually the slabs don’t come any larger than this! Lighting channels are built underneath the edge of the worktop to create a touch of glamour in the evenings.

## Stockists

### APPLIANCES

Five-oven **AGA** Total Control in Black, £12,395, AGA. M6032 SC **microwave**, £629; CVA6431 Nespresso **coffee machine**, £2,099; G6260 SCVi integrated **dishwasher**, £1,250; DA2270 integrated **cooker hood**, £725, all Miele. DD60DH17 integrated Double **DishDrawer**, £1,050; RB90S64MK1 CoolDrawer integrated **fridge drawer**, £2,299, both Fisher & Paykel. Model 65 **waste disposal unit**, £255, InSinkErator. Fusion Square 3-in-1 **boiling water tap**, £1,150, Quooker.

### FIXTURES AND FURNISHINGS

Karbon articulating **mixer**, £1,669, Kohler. Silestone Helix quartz **worktops and upstands**, from £550 per sq. m, with integrated Silestone Lagoon **sinks**, from £700 each; Mirror **splashback**, from £100 per sq. m; Original BTC Prismatic **pendant lights**, from £107 each; **Wall paint** Jerusalem Artichoke, cabinetry painted in Root Ginger, £41.50 per 2.5 litres, all Chiselwood. Port **pop-up socket**, from £205, EVOnline. Lincolnshire Limestone **floor tiles**, £126 per sq. m, Artisans of Devises. Suffolk High Back **bar stools** in Seasoned Oak, £295 each, Neptune Similar **dining table and chairs**, from a selection, Nicky Cornell.

### CONSERVATORY

Vale Garden Houses

01476 564433 valegardenhouses.co.uk

### INTERIOR DESIGN

Irena Z Murray 01636 636854

AGA advice by Rosemary Leech at Serious Cookware

FOR STOCKISTS, SEE PAGE 150





TOM HOWLEY

EXQUISITE BESPOKE KITCHENS

SALE



[TOMHOWLEY.CO.UK/KESKB](https://tomhowley.co.uk/keskb)  
FREE DESIGN SERVICE

CALL: 0161 848 1200 FOR A BROCHURE.  
AVAILABLE NATIONWIDE

QUOTE CODE K-ESKB24  
BRITISH CRAFTSMANSHIP

UNRIVALLED QUALITY



A MEMBER OF THE NEVILLE JOHNSON GROUP

**LONDON**  
020 7499 5145

**ALTRINCHAM**  
0161 929 5392

**ALDERLEY EDGE**  
01625 599 636

**NEW BRISTOL**  
01179 730 981

**BRENTWOOD**  
01277 214 587

**BEACONSFIELD**  
01494 673 443

**ESHER**  
01372 462 378



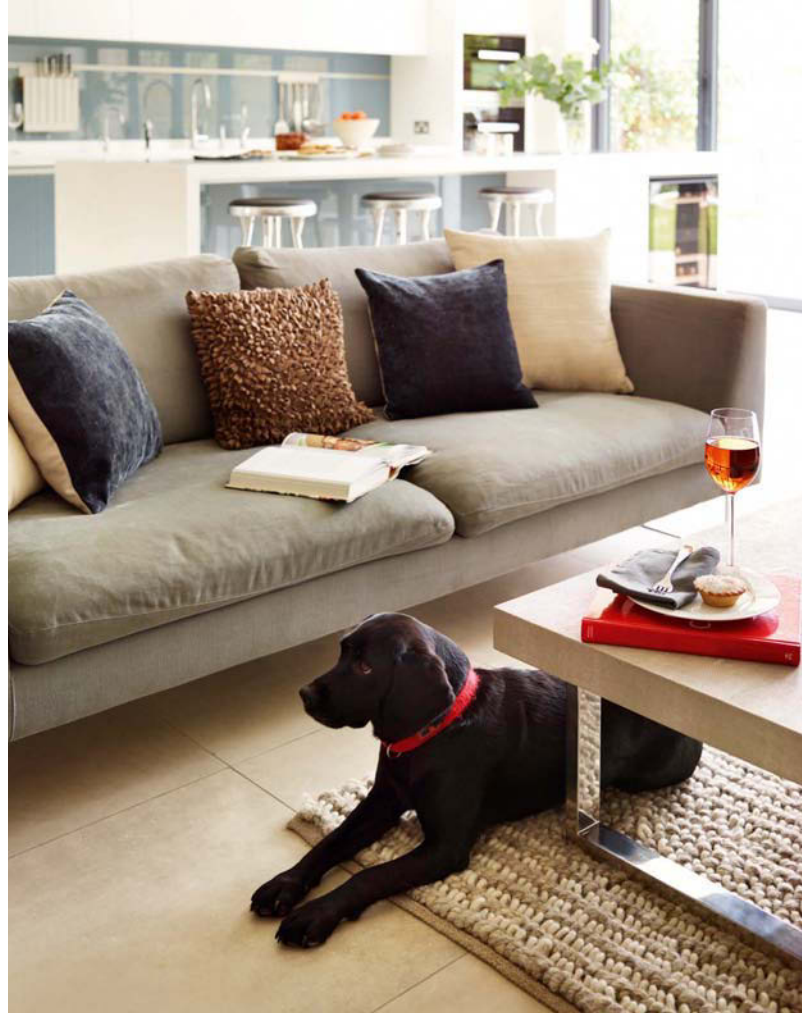
### FLUSH FIT

The extractor is built into the ceiling, so it doesn't obstruct Anna's view of the garden and dining table when she is cooking

# Crowd PLEASER

Entertaining is easy in Anna and Mark Cooper's spacious new kitchen, which is fit for a family of five – and a crowd of friends

PICTURES DARREN CHUNG | WORDS AMELIA THORPE



#### MODERN COMFORT

The family's dog Milly prepares for a sleep on the warm and textured rug. Both the linear coffee table and neutral sofa echo the modern look of the room, their gentle colours completing the scheme

**E**ven before they bought their late Victorian home in West London, Anna and Mark Cooper knew that they had their work cut out for them. 'The house hadn't been touched for about 20 years, and the kitchen was particularly dated and old,' explains Anna. 'It was also small and dark, so we knew that something had to be done.'

That something turned out to be the demolition of an internal wall between the old kitchen and an adjacent sitting room, with a modest (about 1.5m) extension into the garden. 'Other houses on this street have been extended much further, but we didn't want to lose the garden as our children are sports mad – if they are not eating or sleeping, they are outside playing cricket, football, rugby, hockey or tennis,' says Anna. She is a full-time mum to a daughter, 12, and two sons, 11 and 9.

So Anna and Mark chose to create a spacious kitchen-dining-living room designed for busy family life, with easy connection to the generous garden. And the natural choice of kitchen company for the couple? 'Holloways of Ludlow,' says Anna. 'The team created a kitchen for us in our previous home and did a great job, so we trusted them.'

'We wanted a clean-lined and contemporary kitchen, with a layout that allowed easy flow out to the garden, as well as plenty of space for entertaining,' she continues. Spotting the blue-grey glass finish on display in the Holloways' showroom, Anna decided to team it with white, enhancing the modern, fresh feel of the new room. She also chose hardwearing surfaces, including durable, easy-to-clean porcelain floor tiles, which cope well with mud from goal scoring in the garden.

With a run of tall storage units, integrated appliances and a sink zone along the length of one wall, it's an easy turn to the cook station on the large island. Facing out towards the seating area and dining table, Anna can join in the conversation when she is preparing meals.

'I love cooking – Sunday roasts, big celebratory parties and lots of family meals with friends. The layout here works so well, with everything in its right place,' says Anna. 'And the boys are appreciative – the island is perfectly positioned so that they can even do a full run-up through the kitchen and out into the garden when practising cricket!' **EKBB**





*'We wanted a contemporary and clean-lined kitchen, with a layout that allowed easy flow into the garden'*

#### STORAGE SPACE

To the left, the walk-in larder is built-in behind a stud wall, next to a run of tall cupboards. The fridge and freezer are also built-in, close to the walk-in larder, so that all food storage is kept close together.







#### FRAME UP

Smooth Corian – a durable acrylic solid surface material – is used to frame the island, contrasting with the blue-grey glass panel below



*‘The children can sit on the bar stools while doing their homework, but the hob is positioned at the other end so they don’t get splattered while Anna is cooking’*



**ROBERT BURNETT**  
HEAD OF DESIGN,  
HOLLOWAYS OF  
LUDLOW BESPOKE  
KITCHENS & JOINERY

**How did you approach the project?** First of all, it wasn’t just about the kitchen, but about how the cooking-living-dining zones worked together in the new space. The island is essential to the success of the new room, bridging the different zones together. And we built a walk-in larder behind a stud wall in the corner by the entrance door. It does two things. Firstly, it provides a massive amount of storage space, which is essential in a busy family kitchen, and secondly, it prevents the kitchen cabinetry itself from looking overbearing in the room.

**Can you tell us more about the design of the island and your overall idea for it?** The island is designed as the main preparation area in the kitchen, as well as the sociable hub of the design. The children can sit on the bar stools while doing

their homework, but the hob is positioned at the other end – so they don’t get splattered with spaghetti sauce when Anna is cooking! The hob is also positioned close to the ovens which is handy if Anna wants to put a hot dish on to a surface close by, ready to serve up. It also means that there is room for someone to be washing up while another is standing at the hob.

**And the materials and finishes?** Corian is very durable (so is great for a family space) and appears totally seamless, so here we used it to ‘frame’ the island for a crisp finish. The cabinets are handleless and finished in simple matt white for a contemporary look, while the blue-grey glass accents bring the room to life. The horizontal lines of aluminium – of the finger bars and utensil rail – add a modern, classy finish.

Q&A



## ON THE FLOOR

Anna chose durable porcelain floor tiles for the kitchen floor to cope with her sons popping in and out from the garden in sports shoes



## WINE STORAGE

The wine cooler is positioned close to the bar stools, and on the right side of the island for the dining table, away from the cooking zone





#### LONG LINE

Slender aluminium horizontal lines add a sharp finish



### *Kitchen profile*

With matt white handleless cabinet doors, accents of blue-grey glass and a large island framed in a seamless piece of Corian, this bespoke kitchen design combines modern looks with a fresh finish. Aluminium detailing, strikes another crisp and contemporary note, while black glass appliances from the Miele brand round off the smart style.

#### HOLLOWAYS OF LUDLOW

#### BESPOKE KITCHENS & JOINERY

121 Shepherd's Bush Road, Brook Green, London, W6 7LP.

Tel 020 7602 5757. [hollowayskitchens.com](http://hollowayskitchens.com)

Kitchen prices from £30,000.



#### RAIL LINK

The bespoke aluminium rail is cut into the glass splashback and used to hang a knife block





## ROOM WITH A VIEW

The family can enjoy the garden views when they are gathered around the dining table, positioned close to the full-height glass doors

*‘Other houses on the street have been extended much further, but we didn’t want to lose the garden as our children are completely sports mad’*



## Stockists

### APPLIANCES

H6460BP **oven**, £1,749; H6400BM **combination microwave**, £2,099; ESW6229 SousChef **warming drawer**, £1,049; Similar **wine cooler**, KWT 6322 UG, £2,700; G6370SCVi fully integrated **dishwasher**, £1,350, all Miele. EH975SK11E **induction hob**, £964; KI72LAF30G integrated **fridge**, £929; GI38NA55GB built-in **freezer**, £1,225, all Siemens. Stratus ceiling **extractor** with SEM 5 external motor, from £2,327, Westin Design. **Boiling water tap** in polished chrome, £890, Quooker.

### FIXTURES AND FURNISHINGS

Tara Classic **tap** in polished chrome, £538, with rinsing spray set, £360; Integrated liquid **soap dispenser**, £188; all Dornbracht. Mini-Swivel Filterflow **filtered water tap**, £233, Franke. Corian

Glacier White **worktops** and integrated sinks; Bespoke blue-grey glass **splashback** with integrated aluminium **utensil rail**; Bespoke window seat covered in Romo Linara **fabric**, all Holloways of Ludlow Bespoke Kitchens & Joinery. Viking **pendant lights**, from £60 each, Holloways of Ludlow. Similar porcelain **floor tiles**, Gante Crema semi-polished, from 38.76 per sq. m, European Heritage. Similar **bar stools**, chrome stools, £37 each, Atlantic Shopping. Similar wall **clock**, from a selection, The Conran Shop. Try The Antique Table for a similar antique refectory **table**, Calligaris Boheme **chairs**, from £183 each, Heal's. Tribeca **sofa**, from £2,171, Adventures in Furniture. Similar **coffee table**, from a selection, OKA. Modern Loop Weave **Rug**, from £349, Marks & Spencer. Hampshire **mirror**, from £165, Brissi. Walls painted in Snowfall matt **emulsion**, £34.99 per 5 litres, Crown Paints.

FOR STOCKISTS, SEE PAGE 150

### OLD AND NEW

Anna bought the refectory table from an antiques shop and says she likes the contrast of its aged timber with the coolly modern white dining chairs



PRODUCT DESIGNER PROFILE

# *Henry* SWANZY

A creative mind and a background in working with wood drive Henry to design the most beautifully crafted and functional furniture

FEATURE EMMA FOALE | PHOTOS BEN MOSTYN





### What were your childhood ambitions?

I always knew I wanted to do something creative. My father was a home workshop tinkerer, and it was where I genuinely felt most at home. I've always had a natural flair for making things and was lucky enough to be encouraged to express this creativity during my school years.

### Where does your inspiration come from?

The germ of an idea can come from more or less anywhere. What is perhaps more identifiable is the criteria that the design needs to meet. The initial idea needs to be an interesting one, but then it needs to work, and to satisfy the brief the idea itself creates. What I hope all my designs achieve is simplicity, integrity and function. I love a simple solution, but I am also a perfectionist. I am not keen on decoration

### What's your favourite part of your job?

Designing and prototyping. I love developing something from an idea – I do a lot of creative thinking when I'm either walking or driving – and seeing that through to a finished product. I love the problem solving challenges it throws up. What I like about designing 'products' rather than one-offs, is that you can justify spending the time designing solutions to problems. When the outcome is something you've designed, and can now produce efficiently, that is hugely rewarding.

### What's your favourite product you have made so far?

It's always the next one! The 'subtle personality of the handmade' is something which I think is integral to our work. This is perhaps best illustrated in the Pollyfox trestles. We prototyped many

*'I love developing something from an idea – I do a lot of creative thinking when I'm walking or driving'*

for its own sake, what I hope to achieve are designs which are beautiful in their functionality. However, I come from a craft background, and wood is my medium, so the design needs to work with and enhance the natural beauty of that material. Wood is an amazing material, and if managed well and sympathetically, is a resource we should nurture and relish.

### Where do you source your materials?

I'd like to use all English timber, and we do use plenty. There is a balance to be struck here however. Much of our oak comes from France where they grow and manage their woodlands in a way we no longer do, and perhaps no longer can. English oak tends not to come from managed plantations, it therefore rarely comes with FSC certification (not because it wouldn't qualify, but certification costs and scale is therefore a factor). All our ash is English and it, along with the English oak, comes from timber merchants in Wiltshire.

### What do you always hope to achieve every time you set your mind to a new design?

I want to achieve something original. This is tricky, as there is an awful lot of furniture out there! I need to know that it performs its function to the best possible standard. I want it to be relevant to our times. My background is in making extremely time consuming one-off commission pieces, but I fell out of love with that. I want to produce pieces that warrant being repeated and that can be appreciated by as many people as possible, while maintaining integrity, which is hugely important.

versions but what transpired was that the subtle flare and asymmetry of the legs is what lifts the piece into a different category, away from the production line efficiency. This is the influence of wabi-sabi, a Japanese aesthetic principle which appreciates the inherent beauty of imperfection, and one which I feel is integral to my design language.

### The Orinoco bench intrigues us with its frame and bench top. Can you tell us more about it?

This was born out of the realisation that the first slice taken off a characterful log has little commercial application. I thought, what can I do with this? You have to be careful when working with raw materials not to achieve a rustic, quirky-crafty look. The raw beauty of the timber is contrasted with the clean crisp lines of the stainless steel which essentially 'frames' the material and encourages a little interrupted appreciation of the natural beauty. It's named after a character from the popular TV series 'The Wombles' – famous as they were for 'making good use of the things that they found'.

### What are you currently working on?

We have several ideas at prototype stages at the moment; a low stool, a bar stool, Orinoco console tables, coffee tables, coat hooks and lights.

### Are there any materials you haven't worked with that you'd like to use?

New materials will always be of interest. At the moment I'm exploring the use of cast bronze to use with new pieces in the Orinoco range. **EKBB** [henryswanzy.com](http://henryswanzy.com)

**TOP** When it comes to studio space, Henry says how lucky he has been.

'We have 1,500 sq ft of wharfside industrial unit, all concrete with deep girders running through it. This contrasts with the beautiful view of Falmouth marina'

**MIDDLE** Ideal for either kitchens or hallways, the Pollyfox bench has

a subtle pitch, made using brass rods, which increases comfort and provides a handy place to perch. Available in two widths and three finishes, it's from £725

**BELOW** With an appearance of lightness, the Pollyfox rectangular trestle table, £1,595, marries oak, glass and cork. Its sturdy oak legs are hand-shaped and arch into interesting crescent-shaped trestle tops

**BOTTOM** The Orinoco waxed bench is made from the first cut of timber from the trunk of an oak. A smooth seat and polished stainless steel frames give it plenty of character. It's from £3,700



### Henry Swanzy

Henry read landscape architecture at university with a view to becoming a garden designer. He says, 'I hoped I could combine a love of the natural world with the creativity that I yearned.' He then discovered that hands-on making was his real love. He set up the 'Henry Swanzy' brand in 2013, having been designing and making furniture for about 20 years.





## Make a Statement. Surfaces for your home.

Comprised of 93% natural quartz - one of nature's strongest minerals, Caesarstone quartz surfaces offer the ultimate combination of form and function, allowing for a diverse, durable, and practical surfacing material with its stain, scratch, and non-porous properties.

[www.caesarstone.co.uk](http://www.caesarstone.co.uk)



Bianco Drift 6131



# Style

ARTISTIC  
ARRANGEMENT  
*Inject design flair  
with angled dining  
furniture, finished in  
smooth matt black*

Deconstructed Windsor black  
painted ash furniture by William  
Warren, from £295, Heal's

STYLISH CUTLERY • PANTRIES & LARDERS • ONLINE SHOPPING





# KITCHENS AND INTERIOR SOLUTIONS



**QUALITY - ELEGANT - AFFORDABLE**

Available throughout the UK, including 8 exclusive showrooms:  
Dorking, Hammersmith, Hampstead, High Barnet, Loughton, Palmers Green,  
Twickenham and Wimbledon.

# SCHMIDT

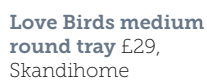
# SCHMIDT UK - 01634 311 247





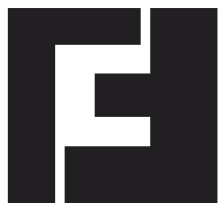
Selia **tablecloth** from £35; Onuma blue **ceramics collection** from £14; **Napkins** from £5; Venice **chopping boards** from £12 each; Salt and pepper **mills** from £24; Merikine **tea towel set** £10, all Urbanara

*‘Create a rustic dining area with rich blue and patterned ceramics, handcrafted glassware and grainy solid oak’*



FOR STOCKISTS, SEE PAGE 150





CHAMBER FURNITURE

To truly appreciate our Kitchens, Bedrooms  
Studies and service please visit our showroom  
Monday to Friday 9-5.30 and Saturday 9-2

If you would like to discuss your project with  
a designer or to request our latest brochure  
please call 01959 532 553 or visit our website.

The Old Timber Yard, London Road, Halstead, Kent, TN14 7DZ  
t. 01959 532553 f. 01959 534053 w. [chamberfurniture.co.uk](http://chamberfurniture.co.uk)



White garden LED light **garlands** from £12, Graham & Green



*‘Choose a statement light to use above your dining table and pick eclectic crockery for a lively table setting’*

Kitchen **textiles** from £7.50; Wooden **utensils** £6.50 each all Bloomingville



PH 3<sup>1/2</sup>-3 pendant **light** by Poul Henningsen £632, Louis Poulsen



Corona grey & turquoise throw £90, Luma



Georg stool in oak £199, Skagerak

Resin Lotus seed jug £145, Dinosaur Designs



Pop bottle bowl by Taz Pollard £25, Quiirk



Wooden board £18, The White Company

FOR STOCKISTS, SEE PAGE 150





**charnwood**

*Exceptional British made wood stoves*

01983 537780 [www.charnwood.com](http://www.charnwood.com)







Black & Gold framed convex mirror £80, Rockett St George

*'Highlight an ocean palette with vibrant textiles and coloured glassware to achieve a modern vintage look'*



Enter magazine holder £154, Holly's House



Wallis soft fluted back easy chair in Mustard Wool from £685, Arlo & Jacob



True Grace yellow dining candles £2.75 each, The Conran Shop



Welsh Reflection lampshade £85, Anna Jacobs



Day Birger Et Mikkelsen Raid cushion cover £119, Arnara



Chester bench in Jacobo Midnight from £840 plus fabric, The Sofa & Chair Company



Grey & green glass bottles £16 each, French Connection

FOR STOCKISTS, SEE PAGE 150

COMPILED BY KIRSTEN JONES





# Making SHAPES

*Complete a charcoal and concrete palette with rich wood accents to add warmth. Streamlined appliances, modern furniture and a geometric rug will add interest to minimal styling*

COMPILED BY KIRSTEN JONES

- 1 BM451 400 series combi-microwave oven, around £2,800, Gaggenau 2 Nuevo Living Yves pendant lamp, around £825, Inmod 3 Geometric wool rug, from £150, Plantation Rugs 4 Viceroy salt/pepper mill, £145, OKA 5 Ships glass decanter, £52, LSA 6 Media single lever mixer tap in chrome, from £218, Abode 7 Gubi bar stool in American walnut, £620, Chaplins 8 Five-zone Touch&Slide induction hob, £1,200, Fisher & Paykel 9 Star cutting board, £21, Ferm Living 10 Verner & Viola containers, from £32, Nordic Elements

FOR STOCKISTS, SEE PAGE 150

#### KITCHEN DESIGN

Leicht's new Tocco/Concrete **kitchen** displays a fine concrete surface, applied to durable lacquered MDF. Available in Light Manhattan, Dark Brasilia and rust coloured Le Havre, this material offers a natural look to contrast against modern cookware and a steel worktop. Kitchens start from £15,000







## TUCK IN

Boasting 24-carat gold plating, this five piece set of gold-dipped stainless steel cutlery is priced at £32 from Anthropologie

# Setting the table

*Use detailed cutlery to stand out from the plate at dinner time*

COMPILED BY KIRSTEN JONES



- 1** Seletti Keytlery 24-piece stainless steel cutlery set, £210, Amara **2** Set of four pieces of cutlery in brushed stainless steel, £9, Rockett St George  
**3** Twig five-piece silver plated cutlery set by Michael Aram, £92.77, Artedona **4** Aladdin cutlery with horn effect acrylic handles, from £8.15 each, Divertimenti **5** Gold five-piece place setting, £24, West Elm **6** Carsen Concho stainless steel flatware five-piece place setting, £75, Ralph Lauren Home **7** Goa 36-piece stainless steel cutlery set, £425, The Conran Shop **8** Dry cutlery in mirror-polished steel with mat handle, £47 for a five-piece set, Alessi **9** Sabre Baguette pearl cutlery in stainless steel, from £15 each, Occa-Home

FOR STOCKISTS, SEE PAGE 150



## SILVER SHADES

Mix and match materials using the Omega Natural Greystone work surface with Blanc Megeve splashback. It's shown here in Linear texture with a Tobacco Oak Ultramatt texture work surface. The Omega range is priced from £40 per linear metre from Bushboard

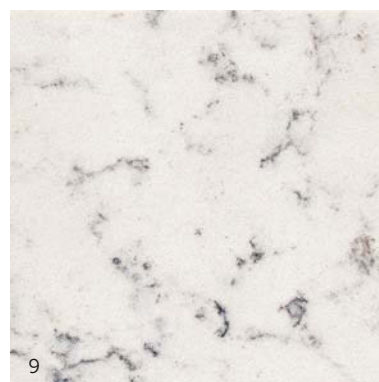
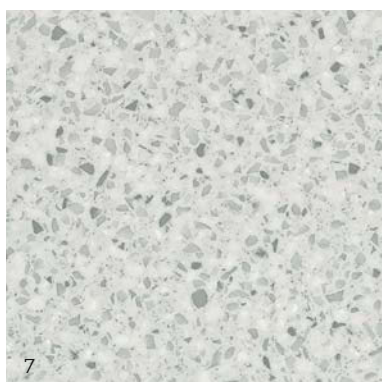
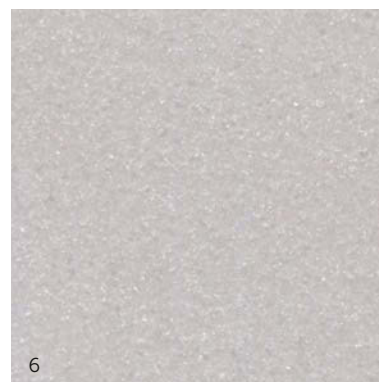
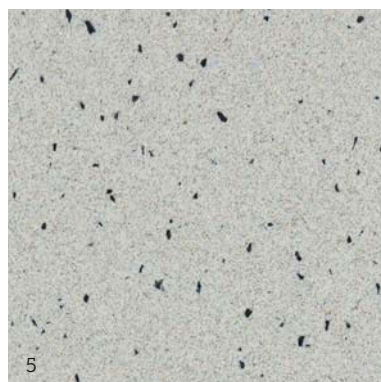
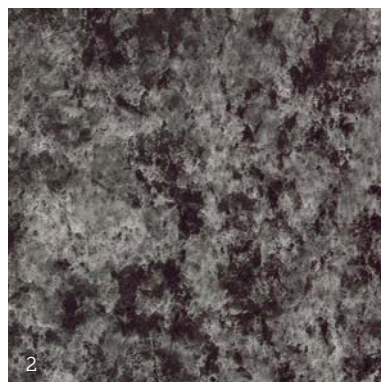




# On the surface

*From black to white, there's a greyscale worktop to suit any kitchen theme*

COMPILED BY KIRSTEN JONES



**1** Labrador Blue Pearl granite, from £500 per linear metre, Second Nature **2** Grigio granite, from £140 for worktops, Axiom® by Formica Group **3** S-0102 Violet Grey resin and Clear/Sapphire glass, £450 per linear metre, Resilica **4** L902 Erice Krion solid surface, around £140 per linear metre, Porcelanosa **5** Blue steel quartz, from £385 per sq. m, Granite Transformations **6** Sparkle Kreem Grey solid surface, from £300 per linear metre, HI-MACS® **7** Silver Birch solid surface, from £310 per linear metre, Corian® by DuPont™ **8** Orka MISTRAL mineral acrylic, from around £250 per linear metre, Karonia **9** Nebula series Lyra natural quartz, from £400 per sq. m, Silestone®

FOR STOCKISTS, SEE PAGE 150



# Store AND *order*

Larders and pantries are making a massive comeback in the kitchen, so make sure yours is as beautiful as it is functional

FEATURE LARA SARGENT

## PERFECT PANELLING

A classic, built-in larder cupboard by Plain English is painted in Shaded White by Farrow & Ball with a honed Kashmir White granite worktop and oak pull-out trays. Complete kitchens start from £40,000





## NATURAL RESOURCES

**Left** Robust and spacious, this solid walnut larder cupboard from Teddy Edwards has four full-depth drawers with scallops for ease of opening and tiered shelving for clutter-free, accessible storage. Packet racks inside the door are ideal for condiments, oils and spices. Full kitchens start from £40,000



## HIDDEN GEM

**Above** Smallbone's Macassar breakfast cupboard is hidden behind folding doors and opens to reveal a small fridge, shelving and worktop. A hot water tap and sink can also be specified. Kitchens start at £40,000

## CLEVER CLASSIC

**Below** Part of Roundhouse's Classic bespoke kitchen in matt lacquer, the Fulham pantry has a contrasting black walnut interior with a cool marble worktop. Kitchens cost from £35,000



The face and function of the kitchen has changed vastly over the last few decades, let alone a century ago, but if there's one time-honoured fixture that remains a steadfast favourite it's the larder and pantry. Before you don your mop cap and frilly apron, today's designer version is a million miles away from the draughty, dusty room best relegated to the archives of a Victorian country kitchen. In fact, larders and pantries are experiencing a welcome renaissance in the 21st century home and have evolved into a key feature for every style of kitchen, be it in a chic modern apartment or a rustic, rambling cottage.

'Pantry is more relevant now than ever before as the need for compact, coherent storage space where all dried goods can go (and fit) is necessary to keep today's often open-plan kitchens clutter-free,' enthuses Jamie Telford, director at Roundhouse.

It goes without saying that today's kitchen has very different needs from the country sculleries of old. There are modern space constraints to consider as well as eclectic tastes to satisfy and more and more hi-tech gadgets and gizmos to fit in. Of course, with the advent of refrigeration, the need for a separate larder has almost died out, and a naturally cool, walk-in room where cooked meats, cheese and wine can mature with age, and fruit and vegetables are kept fresher for longer, might be considered a luxury these days.

Step forward the new-look pantry with its canny storage solutions (pull-out wire racking, built-in plug sockets and space-saving slide-and-hide pocket doors) beautiful materials, and luxurious finishes such as marble, mirror and bronze, for starters. There is a style and size to suit all too, from skinny, pull-out units to curvaceous bespoke pantries slotted neatly on to the end of a run of units and ultra-modern designs such as Modulnova's Studio concept where sleek foldaway doors hide an entire working module of storage and appliances – perfect for small space living.





### INNER SPACE

This workhorse of a larder is by Tom Howley and offers masses of space for dried goods, bottles and packets with wicker baskets, drawers and door racks. A full kitchen is priced from £35,000





#### WALK-IN SOLUTIONS

This walk-in bespoke larder from Chamber Furniture is situated next door to the huge, side-by-side, fridge-freezer, creating an entire bank of food storage. Kitchens cost from £40,000



## *'30 years ago we were taking out walk-in larders to gain space for built-in furniture. Now we are designing them back in'*

'The traditional larder or pantry has certainly made a lasting comeback, but this time, with a distinctly modern lease of life,' says Jane Stewart, design director at Mowlem & Co. 'These days a pantry can be whatever you want it to be, so long as it's spacious and well-organised, and there's a joy in opening up a sleek set of doors to reveal your 'Aladdin's Cave' of ingredients, all within easy access.'

A tall larder cupboard, integrated into the overall kitchen design, continues to be one of the most popular options and can be just as effective as a dedicated pantry room. Such a spacious, well-equipped cupboard can house a whole range of brilliant storage solutions – from spice jars, willow baskets and wine racks to marble pastry shelves, grain hoppers and electrical points for toasters, kettles and blenders. A traditional, freestanding version is often handcrafted from wood with tailor-made storage inside (the added bonus being that it can move house with you), while the modern, built-in larder fits seamlessly with the rest of the kitchen. Either way, most larders generally take the bespoke route, so inside and out it can be designed exactly to suit your kitchen and lifestyle habits. If you haven't got room for a cupboard with all the bells and whistles, try a half-height unit with space-saving, sliding or bi-fold doors or a flexible racking system to utilise an unused corner.

'30 years ago, we were taking out walk-in larders as clients fought to gain more space for their built-in furniture,' explains Graham Barnard, managing director at Matrix. 'Now, we are designing them back in as lifestyles evolve and shopping habits change. I love pantries, and my one at home keeps dry food easily accessible. It doesn't have the fuss of doors, just shelves, and it never needs to be kept tidy, it just needs to be kept efficient.'

**EKBB**

#### LIGHT ME UP

**Above right** Making use of a redundant corner, this walk-in pantry from Charles Yorke is made from American black walnut with maple shelves that can be lit up to reveal the contents at a glance. Complete kitchens cost from £20,000

#### IN THE ROUND

**Right** Mowlem & Co created this curvaceous, walk-in larder as part of a bespoke kitchen. The dark-stained oak panelling opens up to reveal masses of well-ventilated storage for dried goods. Prices start from £30,000 for a complete kitchen







### TALL ORDER

**Top** Part of the Croft Collection, the classic Montrose larder (W1200xD600xH2070mm) is made from painted grey oak and costs £2,250, from John Lewis

### CUSTOM DESIGN

**Middle** Humphrey Munson's Cook's Pantry can be completely customised inside and out. This freestanding design (W1100xD600xH2240mm) is handcrafted from American white oak with useful shelves, drawers and door compartments. It costs £3,200

### COOL CUPBOARDS

**Bottom** The freestanding Moderne food cupboard (W1239xD597xH2085mm) from Fired Earth is made from oak and maple with a bubbled glass front. It's shown here in Pumice, one of 20 standard painted finishes. Priced £6,589



### BESPOKE CABINETRY

**Right** All Charlie Kingham's larders are bespoke and tailor-made. This one has been painted in Farrow & Ball's Elephant's Breath with spice racks, shelving, cabinet lights and a slate worktop. (W1100xD550xH2250mm) Prices start from £3,000



*'The great thing about a larder is the fact that they can be personally tailor-made to suit each individual cook and kitchen layout'*



**CHARLIE KINGHAM,**  
MANAGING DIRECTOR  
OF BESPOKE  
CABINETMAKERS,  
CHARLIE KINGHAM

### How relevant are larders and pantries in the 21st century kitchen?

Regrettably, they were abandoned as an essential kitchen must-have in favour of the newly introduced, fashionable refrigerators of the 1950s and 60s. However, they are making a remarkable comeback in modern kitchens, due to their valuable characteristics and attributes as a cost-effective and beautifully personalised alternative to an unpleasant and imposing fridge.

### Is there any difference between the two?

A larder is generally referred to as a dedicated cupboard that is kept in a cool place close to the food preparation area. Its name originates from Anglo Saxons who stored their perishables in both fat or lard. Pantries are commonly related to separate, walk-in rooms specially designed with shelving and drawers for dried food storage.

**Do I need a big kitchen to incorporate such a feature?** Absolutely not. The great thing about a larder is the fact that they can be personally

tailor-made to suit each individual cook and kitchen layout. For smaller kitchens, you can gain more space for a dedicated larder cabinet by opting for a smaller, undercounter fridge.

### What materials, colours and finishes are particularly on-trend?

All our bespoke larder cabinets are handcrafted from solid hardwood and meticulously hand-painted. Our clients generally look towards making a statement by choosing a daring bold colour or alternatively a darker colour for freestanding furniture as it is better at concealing vacuum and broom marks.

### What's popular now in terms of storage?

We always refer to our larder cupboards as tea and toast cabinets as they are a great place to hide away unsightly yet essential kitchen appliances such as the kettle, toaster or microwave which also helps to declutter the kitchen worktops. It is also extremely helpful having all your food resources in one place - it can really help when the cooking gets tough!





#### HIGHER LEVEL

This beautifully simple Shaker-style pantry cupboard from deVOL is fitted out with spice racks, a slate shelf and two large drawers. It can be freestanding (W1000xD560xH2100mm) or incorporated into a run of units and is shown here in Lead, priced £2,615





#### SLEEK AND CHIC

This matt lacquer Euromobil kitchen from Espresso Design features pop-out coplanar doors which slide over appliances and racks of storage for a fully working 'larder wall'. The coplanar doors have sleek, integral handles and are completely flush fitting when closed. Kitchens are from £30,000

*'Popular storage options include tiered shelving and jar and spice storage on the backs of doors and vegetable drawers. A cold shelf, such as a piece of naturally cool marble or a slab of hewn granite, is brilliant for cheese'*

#### ROOM OF ITS OWN

This large and luxurious walk-in pantry has an ambient temperature for wine and food, and is part of Modulnova's Float kitchen in raw oak from DesignSpaceLondon. Complete kitchens cost from £25,000

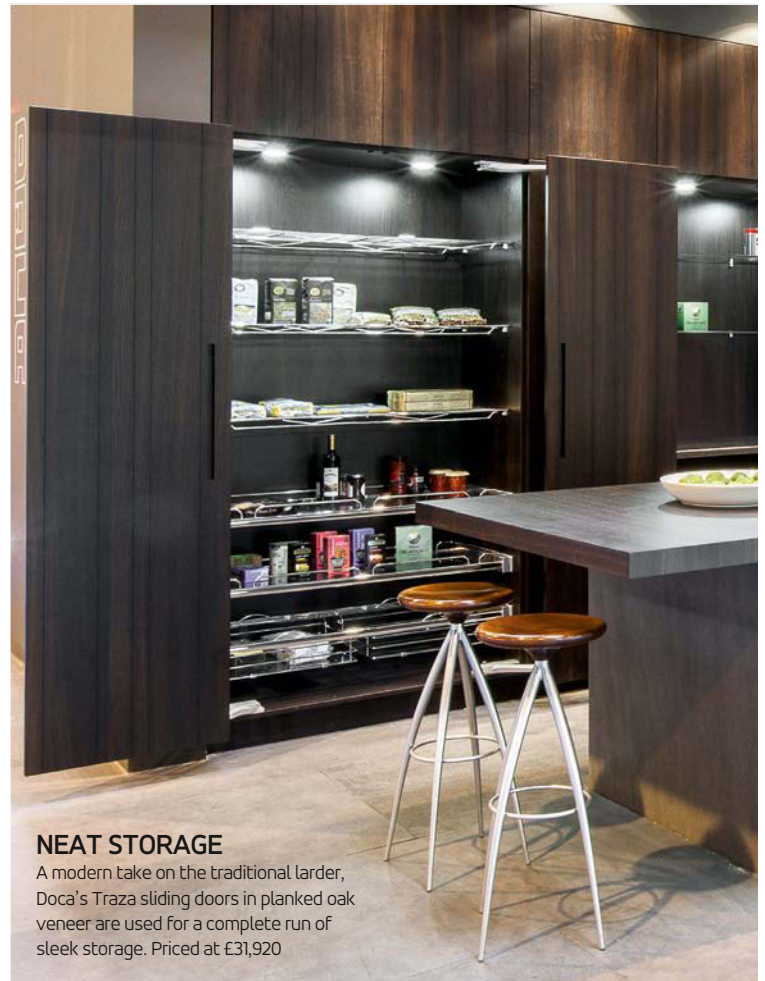




## BESPOKE OPTIONS

### HOW TO GET THE BEST FROM YOUR KITCHEN STORAGE

- Modern day pantries can be adapted with plug points so you can hide microwaves and other small appliances out of view.
- Start by tailoring the dimensions of your larder – not just the width but also the depth of your cupboard – to suit your needs. Kitchen architect and design visionary Johnny Grey cautions to not get hung up on cupboards having to be 600mm, 400mm or even 300mm deep because as little as 150mm is useful for lots of items, from condiments to herbs and jams to bottles.
- Door racks instantly bump up storage opportunities. Stash tall, short, slim and wide bottles and jars by building in narrow racks in different sizes and fit with bars or rails so your food stays put!
- Load-bearing, wide pull-outs and drawers that glide out with ease are brilliant for bulky pots and pans and heavy dried goods.
- Wire racking is a modern day storage boon. Fit either on the backs of doors or use as pull-outs accessed from both sides, and choose from an array of flexible elements, from bottle shelves and spice baskets to paper towel racks and even coffee capsule holders (try SieMatic's amazing MultiMatic interior fitting system).
- Popular storage options at Charles Yorke include tiered shelving, jar and spice storage on the backs of doors and vegetable drawers. A cold shelf, such as a piece of naturally cool marble or a slab of hewn granite, is brilliant for items such as cheese.



#### NEAT STORAGE

A modern take on the traditional larder, Doca's Traza sliding doors in planked oak veneer are used for a complete run of sleek storage. Priced at £31,920



#### HIGHLY ORGANISED

SieMatic's MultiMatic system includes a wire rack for safely storing wine bottles inside the cupboard plus hooks and racks on the inside of the door for maximum storage opportunities. SieMatic kitchens cost from £20,000



#### SMALL WONDERS

Keep kitchens tidy with this pocket door cupboard from Matrix designed to store small appliances and cooking paraphernalia. The double centre doors fully retract when not in use. Full kitchens from £30,000





#### PULL-OUT

Tall, skinny pull-outs create masses of useful storage. The Convoy Centro larder, from 1909 Kitchens, is just 300mm wide, but has a 130kg loading capacity with easy view, glass sides and height adjustable shelves. Priced from £680, with complete kitchens priced from £20,000



#### SLIM SLIDERS

**Above** The Convoy Premio larder from Second Nature kitchens is 600mm wide, has glass sides and can take up to 100kg in weight. Priced from £840 with full kitchens costing from £10,000

#### ON THE WIRE

**Below** Rencraft's pull-out larder unit with handy wire racking. Kitchens cost from £16,000



EXPERIENCE CLASSIC ENGLISH ELEGANCE



DAVONPORT

Naturally Distinctive Interiors

HANDCRAFTED IN  
COLCHESTER, ENGLAND

d a v o n p o r t . c o m



Visit your nearest showroom in the south of England to experience the difference.

To request a portfolio or speak to a designer: 0845 468 0025





# STORAGE DIRECTORY

*The next in our collectable directory guides; this month our round-up of companies specialising in pantries and larders*



**1909 KITCHENS**  
01325 505539  
1909kitchens.co.uk

**BLUM**  
01908 285700  
blum.com

**BRAYER DESIGN**  
0208 397 1111  
brayerdesign.co.uk

**BRITISH STANDARD**  
020 7870 7688  
britishstandardcupboards.co.uk

**BULTHAUP**  
020 7495 3663  
bulthaup.co.uk

**CHALON KITCHENS**  
01458 254600  
chalon.com

**CHAMBER FURNITURE**  
01959 532553  
chamberfurniture.co.uk

**CHARLES YORKE**  
01623 756080  
charlesyorke.com

**CHARLIE KINGHAM**  
020 7935 2255  
charliekingham.co.uk

**DAVONPORT**  
01206 760800  
davenport.com

**DESIGNSPACE LONDON**  
020 7228 8088  
designspacelondon.com

**DEVOL**  
01509 261000  
devolkitchens.co.uk

**DOCA**  
0203 603 8835  
docauk.com

**ESPRESSO DESIGN**  
020 7078 9912  
espressodesign.co.uk

**FIRE EARTH**  
0845 366 0400  
fireearth.com

**HARVEY JONES**  
0800 389 6938  
harveyjones.com

**HENDERSON & REDFEARN**  
01255 861943  
hendersonandredfearn.co.uk

**HIGHAM FURNITURE**  
0800 047 0235  
higham.co.uk

**HUMPHREY MUNSON**  
01371 821300  
humphreymunson.co.uk

**INHOUSE INSPIRED ROOM DESIGN**  
01661 842304  
inhouseuk.net

**IN-TOTO**  
01924 487900  
intoto.co.uk

**JOHNNY GREY**  
01730 821424

**JOHN LEWIS**  
03456 049 049  
johnlewis.com

**JOHN LEWIS OF HUNGERFORD**  
01488 688 100  
john-lewis.co.uk

**KIT STONE**  
0870 777 0099  
kitstone.co.uk

**MARK WILKINSON FURNITURE**  
01380 850007  
mwf.com

**MARTIN MOORE & CO**  
020 7385 9666  
martinmoore.com

**MATRIX**  
020 7808 0340  
matrixkitchens.co.uk

**MEREWAY KITCHENS**  
01217 067844  
merewaykitchens.co.uk

**MOWLEM & CO**  
01565 754547  
mowlemandco.com

**NEIL LERNER**  
020 7433 0705  
neillerner.com

**NEPTUNE**  
01793 427427  
neptune.com

**NOLTE KÜCHEN**  
01707 290444  
nolte-kitchens.com

**PLAIN ENGLISH**  
01449 774028  
plainenglishdesign.co.uk

**PODESTA**  
01494 677770  
podesta.uk.com

**POLIFORM**  
020 7368 7600  
poliformuk.com

**RENCRAFT**  
01732 762682  
rencraft.co.uk

**RICHARD BAKER FURNITURE**  
0208 336 1777  
richardbakerfurniture.co.uk

**ROUNDHOUSE DESIGN**  
020 7297 6220  
roundhousedesign.com

**SECOND NATURE**  
01325 505539  
sncollection.co.uk

**SIEMATIC**  
01612 466010  
siematic.co.uk

**SIMON TAYLOR FURNITURE**  
01296 488207  
simon-taylor.co.uk

**SIMS HILDITCH**  
01249 783087  
simshilditch.com

**SMALLBONE OF DEVIZES**  
020 7589 5998  
smallbone.co.uk

**SOLA KITCHENS**  
020 3004 0898  
solakitchens.com

**TEDDY EDWARDS**  
01865 404960  
teddy-edwards.co.uk

**TOM HOWLEY**  
01618 481200  
tomhowley.co.uk

**WOODSTOCK FURNITURE**  
020 8876 0131  
woodstockfurniture.co.uk

# Subscribe now for only £8.50\*

**FEBRUARY OFFER** TREAT YOURSELF TO THREE ISSUES AT THIS SPECIAL PRICE



*By becoming a subscriber, you'll be the first to see our selection of inspirational ideas for your kitchen, bathroom and bedroom*



Download the new mobile edition of *EkBB* on your iPad, iPhone, Android device, PC or Kobo eReader!



TO SUBSCRIBE, VISIT ***essentialsubscriptions.co.uk*** CALL 01778 392471  
OR EMAIL US AT ***subscriptions@warnersgroup.co.uk***

\*For a postal subscription: Direct Debit for only £8.50 including delivery for three issues (Special February offer for UK only). Your subscription will automatically renew every quarter. You can cancel a Direct Debit at any time simply by contacting your bank or building society. Written confirmation may be required. Please also notify us via email at [subscriptions@warnersgroup.co.uk](mailto:subscriptions@warnersgroup.co.uk). Other costs are as follows: **Europe** (airmail) £95 **USA** £120 **Rest of world** (airmail) £145.  
\*\*Choose from the following payments for an app subscription: 3 back issue bundle for £7.99 or 1 issue for £2.99, 3 month recurring subscription for £7.99, 6 month recurring subscription for £16.99.





## JUST A PINCH

From tables and chairs to sideboards, shelves and lights, at the wonderful online home of Pinch Design you'll find beautiful wooden pieces that can be tailor-made to complete your interior design. These side tables with solid wood top and triangular shelf are priced from £550 each. [pinchdesign.com](http://pinchdesign.com).



# A WEB OF *Kitchen Inspiration*

*From creative ideas to great products, here are a few of our favourite things online*

FEATURE BY KIRSTEN JONES

## FURNITURE

## AIM HIGH

British brand Benchmark is known for setting the standard for handmade, crafted furniture, and you can browse and buy the sustainable wooden pieces here. We love this handmade Oak Oxbow Carver chair with leather sling seat which is £650. [benchmarkfurniture.com](http://benchmarkfurniture.com).



## Furnish the home...

### ANOTHER COUNTRY

[anothercountry.com](http://anothercountry.com)

Solid wood pieces inspired by British, Scandinavian and Japanese styles

### CLIPPINGS

[clippings.com](http://clippings.com)

A selection of handpicked design companies under one creative roof

### GO MODERN

[gomodern.co.uk](http://gomodern.co.uk)

From traditional to on-trend, this range inspires a design-led, practical home

### MADE.COM

[made.com](http://made.com)

Cutting-edge pieces direct from the makers, all at an achievable price

### MUUTO

[muuto.com](http://muuto.com)

Scandi-style inspiration from pastel dining chairs to raw oak storage

### RAFT

[raftfurniture.co.uk](http://raftfurniture.co.uk)

Eco-friendly reclaimed teak furniture with contemporary highlights

### VERY GOOD & PROPER

[verygoodandproper.co.uk](http://verygoodandproper.co.uk)

Peruse modern utilitarian furniture and interior design projects in public spaces



## ANYTHING GOES

Dive into a pool of designer brands to inspire your new dining area. Offering a range of different styles and on-trend pieces, there's a design to choose for every scheme at Chaplins. This Elvis Wood Drive dining table by Cattelan Italia is available in a choice of finishes, costing £3,009. Online at [chaplins.co.uk](http://chaplins.co.uk).





## CROCKERY

### LA DOLCE VITA

A warm Mediterranean style runs through the home collection at Toast, one of our favourite online stores here at *EKBB*. Among other finds this season, their range of rustic Tuscan tableware is utterly covetable. *toa.st*.

### SIMPLE BEAUTIES

Your go-to shop for all things pretty, Loaf offers a wide selection of gorgeous handmade ceramics, from pared-back white plates to lace-style pudding bowls. They're also a great place for freestanding furniture and soft cushions. *loaf.com*.

### COOK IT UP

Focused on function and practicality, this web store is a hive of long-lasting household products, selling all things useful for the eco-conscious shopper. These attractive and hardwearing German Römertopf cooking bricks are priced from £37.50. *objectsofuse.com*.



### Others to bookmark...

#### ANTHROPOLOGIE

*anthropologie.com*

Eclectic patterned storage and ceramics with refreshing vintage nostalgia

#### FENELLA SMITH

*fenellasmith.com*

Charming animal-print painted earthenware for you and your pets

#### HEATH CERAMICS

*heathceramics.com*

Durable American cook and tableware in tonal shades and pretty patterns

#### KINTO

*kinto.co.jp/en*

Minimalist Japanese designs including tea pots, mugs and serveware

#### THE GOODHOOD STORE

*goodhoodstore.com*

A haven of contemporary and Scandinavian designer kitchenware

#### THE NEW CRAFTSMEN

*thenewcraftsmen.com*

An online house of fine designs from Britain's best craft makers

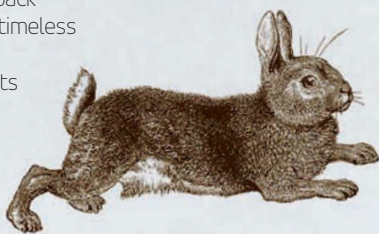
#### UNIQUE & UNITY

*uniqueandunity.co.uk*

Step back in time with mid-century, modern and hand-illustrated ceramics

### ANIMAL MAGIC

From quirky tea towels to aprons and oven gloves in botanical and woodland themes, Thornback & Peel's screen-printed linens envelope a timeless appeal. We love their online home. This white linen hand-printed rabbit napkin costs £9.95. *thornbackandpeel.co.uk*.



## LINEN

### Woven wonders...

#### IAN MANKIN

*ianmankin.co.uk*

Organic printed and striped fabrics for every occasion

#### LINUM

*linum.se/en*

A collection of Swedish-inspired textiles suiting any colour palette

#### PLUM & ASHBY

*plumandashby.co.uk*

Mascot and friendly Fox Terrier Bertie is printed on lovely linens

#### SOPHIE CONRAN

*sophieconran.com*

Handmade linens and accessories for the traditional country home

#### THE LINEN WORKS

*thelinenworks.co.uk*

Classic materials and inspiration to adorn the whole home

#### VOLGA LINEN

*volgalinen.co.uk*

Pared-back fabric and pure linens from Russia and the continent

### ENGLISH WEAVES

Textile designer Tori Murphy has tailored her iconic patterns to a new range of kitchen linens, including aprons, napkin sets and tea towels like the Broadway design below, priced at £25. Her designs are all woven in the UK. Also take a look at her patterned cushions, fabrics and lifestyle pieces. *torimurphy.com*.



### SOFTLY STRIPEY

For designs full of country character, visit Pentreath & Hall. Amongst the quaint ceramics and bold geometric accents you'll find soft striped and pastel linens to complete your table setting. The linens are from around £8 each. *pentreath-hall.com*.







## BRIGHT BLENDS

Understated Danish design is the DNA that runs through the entire Ferm Living 'webshop'. Discover a medley of pastel patterns, metallic accents and pretty prints to add colour to your kitchen. Splash blue linens, from £27; Gold table accessories, from £15. [fermliving.com](http://fermliving.com).



## SHAPE UP

Famed for its unique and artistic homeware, Darkroom offers bold printed ceramics and storage solutions to brighten your home. The T-R-I-B-A-L-A-L-A zigzag plate and Stolen from De Stijl plate no.5 are made to order and are priced from £65. [darkroomlondon.com](http://darkroomlondon.com).

## ACCESSORIES

### COLOUR POP

Visit this lifestyle boutique for a wide range of homeware and design talent from all over the world. Create a statement wall with this Cut & Paste PINK wallpaper from All the Fruits, £125 per roll. [fao-shop.com](http://fao-shop.com).



### The essential extras...

#### AN ANGEL AT MY TABLE

[anangelatmytable.com](http://anangelatmytable.com)

French-style, vintage and floral items. A go-to web store for all things feminine

#### DINOSAUR DESIGNS

[dinosaurdesigns.com.au](http://dinosaurdesigns.com.au)

Unique resin, silver, glass and ceramics from this talented Australian design duo

#### GARDEN TRADING

[gardentrading.co.uk](http://gardentrading.co.uk)

Country-style pieces for every need, from log baskets to homemade jam jars

#### HOUSE ENVY

[house-envy.co.uk](http://house-envy.co.uk)

A collection of practical homeware items with a soft Nordic flair

#### KREIS DESIGN

[kreisdesign.com](http://kreisdesign.com)

British-made serving and storage solutions, crafted from layered plywood

#### NKUKU

[nkuku.com](http://nkuku.com)

Fair trade items promoting traditional artisan skills from Africa and India

#### URBANARA

[urbanara.co.uk](http://urbanara.co.uk)

Homewares from across the globe, using varied woods, wool and recycled plastic

## ONE TO FOLLOW

Take note of these light-hearted musings from international designer and author, Jonathan Adler. The 10 commandments for a happy chic home are sure to set you on your way. These Animalia coasters are £78 for a set of four. [jonathanadler.com/blog](http://jonathanadler.com/blog).



## WORLDLY POSSESSIONS

Created by siblings who are passionate about ethical design, this blog is an open book, educating us in the making of fair trade textiles and accessories. Discover more about the African artisans and then visit the web shop to choose your favourite products. These double sided picture frames are priced from £12.95. [blog.decoratorsnotebook.co.uk](http://blog.decoratorsnotebook.co.uk).



## SHOPS WITH BLOGS

### PIN IT UP

An insight into the creative world of Tine K Home, with photo inspiration from the founder's travels, people's homes and events around the world. Pin up your favourite pictures with this wall deco, from £22, and smoke tile print napkins, £9 for 50. [tinekhome.blogspot.com](http://tinekhome.blogspot.com).



### Ideas to inspire...

#### ABIGAIL AHERN

[abigailahern.org](http://abigailahern.org)

A platform of advice, inspiration, interviews and house tours

#### AMARA

[amara.com/blog](http://amara.com/blog)

Behind-the-scenes stories, luxe prizes and excellent home tips

#### BAINES & FRICKER

[bainesandfricker.net/blog](http://bainesandfricker.net/blog)

New projects, travel, influences and stories from the designers

#### BODIE & FOU

[karinecandicekong.com](http://karinecandicekong.com)

A mixed bag of fashion-inspired content to blend into your home

#### ROWEN & WREN

[rowenandwren.tumblr.com](http://rowenandwren.tumblr.com)

Gorgeous photography, special events and collage wish lists

#### THE WHITE COMPANY

[blog.thewhitecompany.com](http://blog.thewhitecompany.com)

A little white book of style ideas, Q&As and favourite products

# Make It Your Own

**‘Make It Your Own’ – a unique bespoke design and performance service from Westin.**

Modify one of Westin’s ‘Select’ products or create a completely bespoke cooker hood with our consultation design service.

From paintwork to performance, if you can dream it, we can build it.



[www.westin.co.uk](http://www.westin.co.uk)

[sales@westin.co.uk](mailto:sales@westin.co.uk)

+44 (0) 1484 421585

Westin Ltd  
Phoenix Mills  
Leeds Road  
Huddersfield  
HD1 6NG  
United Kingdom





# Welcome to the World of Faber



## DESIGNING STUNNING COOKER HOODS SINCE 1955

Our Italian designs incorporate some of the most innovative technology available, coupled with elegant and unique styling.

Using only the highest quality materials, Faber hoods provide your kitchen with clean air and a touch of magic.

From breath taking island and wall hoods to contemporary ceiling and downdraft extractors, Faber has the perfect design to complement your dream kitchen.

CONTACT US TO FIND YOUR NEAREST SHOWROOM

**0845 548 3130**  
**[www.faberhoods.co.uk](http://www.faberhoods.co.uk)**

**FABER**  
ON AIR. SINCE 1955

**kitchenEx** Exclusive  
UK distributor

# Technology

## TAKING STOCK

*Store wisely  
this winter with  
this sleek wine  
cooler and fridge  
combination  
from KitchenAid*

Left is the KRVF 6030 wine cellar, priced at £9,480, and on the right hand-side is the KRXF 9030 fridge, priced at £11,520. Both from KitchenAid

NEWS • MONICA GALETTI • UNDERFLOOR HEATING • EXTRACTORS



# TECHNOLOGY NEWS

TAKE CONTROL OF YOUR HOME WITH THE LATEST INNOVATIONS

COMPILED BY LUCY MACDONALD

## HIDDEN GEMS

Booking top rated independent restaurants just got easier with this new app from CityHawk. It not only helps you find the best spots within a two-mile radius, it also records your habits and preferences so that your dining choices are personalised for the next time. It's available on all smartphones and is free to download from iTunes or the website. [cityhawkapp.com](http://cityhawkapp.com).



## LINING UP

New from European brand Gorenje is a built-in line of appliances consisting of ovens, microwaves, coffee machines, warming drawers, dishwashers, hobs and fridge-freezers. It's called Gorenje+ and it allows you to create a sleek bank of appliances in your kitchen. Pictured from left to right is the GCS773B combi steam oven, £1,079, GCC800B coffee maker, £1,559, GO778B oven £791 and GCM712B microwave oven, priced at £899. [gorenjeplus.com/uk](http://gorenjeplus.com/uk).

## SLICE AND DICE

Make juicing a part of your New Year resolution with the KitchenAid Artisan maximum extraction juicer. Featuring two-stage juicing technology, firstly the fruit and vegetables are fed through the extra wide feed tube and sliced by the stainless steel cutting blade before then being processed at a low speed. This gives you more juice with less prep work and foam. It's £349 from Selfridges. [selfridges.com](http://selfridges.com)



## Wash & Go

If you're after a new dishwasher with a super quick drying time, then we would recommend you take a look at Whirlpool's 6<sup>th</sup> Sense PowerClean™. This model has a revolutionary innovative PowerDry function, and it uses a dual airflow feature and humidity-condensing fan that activates during drying. This means that dishes can be done in just an hour. Pictured on the left is the freestanding ADP 900 IX dishwasher, priced around £599. An integrated option is also available. [whirlpool.co.uk](http://whirlpool.co.uk).



## Smooth TUNES

Denon has launched two wireless music systems to its CEOL range. Controlled by an easy-to-use app, you can stream music from the computer, mobile devices and the internet via wi-fi and Bluetooth, and it also has Spotify and FM/AM radio. Pictured is the Piccolo N4, priced at £399 without speakers. [denon.co.uk](http://denon.co.uk).



## COMPACT COOKING

Good things come in small packages with the new TR93I, Smeg's latest addition to its Victoria collection of range cookers.

Incorporating modern technology into a more compact 90cm version, the oven has nine main functions, while the induction hob has five different-sized induction zones. Priced at £2,199. [smeguk.com](http://smeguk.com).



## HEATING UP

Complete your kitchen appliances set up with this built-in CM120 microwave with grill from Caple. Made from stainless steel and with a black finish, it fits neatly into a standard 30cm-deep wall unit and has a 17-litre capacity as well as a range of cooking functions.

Available from May, it will cost from £279. [caple.co.uk](http://caple.co.uk).



## HOT DESIGN

The latest innovation on the block is from Danish designer Nils Chudy with Miito, the alternative to electric kettles. The induction base heats the rod, which then warms the liquid surrounding it, eliminating the heating of excess water. The product, which has been shortlisted for a James Dyson award, is still a prototype with a patent pending so we will keep you posted on any future developments. [miito.de](http://miito.de).



## CHORES BE GONE

Make spending time doing the vacuuming a thing of the past with the Vorwerk Kobold VK150 model. An all-in-one cleaning solution, it has interchangeable heads for cleaning different surfaces from carpet to parquet flooring, as well as mattress and dry cleaning brushes. Not only that, it has a Duo Clean head so it can double up as a mop, saving you even more time. Priced from £749. [vorwerk.com](http://vorwerk.com).





MY FAVOURITE KITCHEN APPLIANCE

# Monica GALETTI

Chef Monica Galetti tells us about her menu inspirations and upcoming plans, as well as why a hand blender is her go-to kitchen appliance

FEATURE LUCY MACDONALD

**Where do your ideas for recipes come from?** I get inspired by the seasons and sometimes from conversations with friends.

**Has your training in New Zealand or your Samoan background had any influence?**

I am definitely influenced by where I come from on a few of my dishes. I like to adjust my family ones to suit, such as giving my traditional coconut buns a twist.

**What's your favourite thing to cook at home when you have a day off?** Grilled rib of beef or seafood - but if my daughter had her way it would be either lasagne or spaghetti bolognese every single day!

**You've been mentored by Michel Roux Jr, what is it like working with him?** It has been the best experience a chef could get.

**Can you tell us a bit about your work with cookery school Cactus Kitchens?** I offer cooking experiences for up to 12 people at a time. I design a three course menu and match it with wines from a great supplier at Le Gavroche. They get to enjoy what they've cooked as well as the wine and normally get to take one or two things away with them at the end of the day. It's a relaxed and fun day of cooking with me.

**You say that your Dualit hand blender is your go-to appliance. What features do you like most about it?** That it can be used in a pan directly - it has a non-scratch foot and anti-suction technology so it will not grip the base, giving great control and manoeuvrability. The mini chopping bowl with handy feed tube is also really useful, and it can be used to make sauces, dips and

dressings, as well as chopping ingredients. Something that has really impressed me is the one litre jug, which has a fantastic non-drip spout that really works - perfect for pancakes and drop scone batter. The whisk attachment completes the package.

**What recipes in particular have you created using this appliance?**

This hand blender can be used all day, from breakfast through to pudding. My papaya smoothie is great for the morning and I use the blend attachment to blitz all of the ingredients into a very smooth and delicious drink. Another favourite is roast butternut squash soup with brown shrimps where the blend attachment is used directly in the pan, and the bowl chops the onions into small pieces for quick cooking. For a speedy dinner after work, my tomato pesto takes minutes to make in the chop bowl and can be served with roast chicken and optional fresh tagliatelle, which can also be prepared in the bowl. Finally, for a showstopping dessert use the chop bowl to make a pistachio and pecan crumble that is part of my delicious chocolate soufflé.

**Do you think that most people would get a lot of use out of this appliance and find it easy to use?** Definitely. It is so versatile and nearly everything can go in the dishwasher for easy cleaning. It is also nice and compact so it won't take up too much room on a worktop or in a drawer.

**Any news or exciting plans coming up?** I'm off to film a new series in France and I'm also now working on a second book. At home our news is that we have just got a Boxer puppy called Fynn! *ekbb*

#### FISH OF THE DAY

Beautiful seafood is made easy with this salmon, chorizo and peppers recipe, which goes perfectly with boiled and buttery potatoes on the side (*far right*)

#### TASTEFUL TREATS

Create a simple yet impressive meal with this homemade ricotta dish complete with pickled cucumber and radishes (*right*). Images from *Monica's Kitchen* by Monica Galetti, Quadrille, £20. Photographer: Yuki Sugiura

#### BLEND IT UP

Dualit's versatile 700W hand blender makes light work of everyday tasks as it can chop, purée and whisk with seamless speed. It's from around £80



### Monica Galetti

Monica was born in Samoa and raised in New Zealand, where she completed her training as a chef. She has worked at the restaurant Le Gavroche with mentor Michel Roux Jr for more than 10 years and has worked her way up through the ranks to become senior sous chef. She has also become well known for her role as both a presenter and judge on the BBC TV show *MasterChef: The Professionals*. Monica published her first cookbook 'Monica's Kitchen' in 2012.





*'I get food inspiration from the seasons, and even from conversations with friends'*





A rustic dining area featuring a light-colored wooden table and two chairs with metal frames and wooden seats. One chair has the number '6' on its back. The table is set with a wooden cup, a glass vase with artichokes, and some papers. A dark wooden bench is in the foreground. The room has dark wood paneling on the walls and large dark tiles on the floor. A large window in the background shows a view of a city.

# 10

THINGS YOU NEED  
TO KNOW ABOUT

## *Underfloor* HEATING

GET UP-TO-DATE WITH THE LATEST  
TIPS AND ADVICE FOR BOTH WATER  
AND ELECTRIC UNDERFLOOR HEATING

FEATURE LUCY MACDONALD

Hard surfaces like tiles are one of the best flooring types to have with underfloor heating as they transfer heat well. Pictured are the Furnace porcelain tiles in Iron from Fired Earth. They measure 60x60cm and cost £84.99 per sq. m

## Water WET SYSTEM

One of the most popular ways of underfloor heating is via a warm water system. It works by pumping a controlled flow of warm water from any heat source, such as a boiler or heat pump, through pipes that are embedded into the floor. It uses lower flow temperatures than a radiator system as it makes the most of a boiler's condensing mode, helping it to run efficiently. You can also connect pipes to a solar heating system if you wish.

### ADDED VALUE

ACCORDING TO A SURVEY BY CONTINENTAL UNDERFLOOR, OUT OF 2,000 HOUSE HUNTERS WHO RESPONDED, ALMOST 30% SAID THAT THEY ARE ACTIVELY LOOKING FOR A PROPERTY WITH UNDERFLOOR HEATING IN ALL OR SOME OF THE ROOMS. WITH THIS IN MIND, IF YOU ARE LOOKING TO ADD VALUE ONTO YOUR HOME, A WATER SYSTEM IS THE BEST WAY TO COVER LARGE AREAS, AS THE RUNNING COSTS ARE MUCH LOWER THAN ELECTRICITY IN THE LONG TERM.



## 2 MONEY MATTERS

Although installing a water system is more expensive than electric, in the long-term the running costs are less. Warm water underfloor heating specialists Nu-Heat says that when running it off a gas boiler, this type of heating system can typically be just a third of the running costs of electric. Shown above is Nu-Heat's LoProTM Max water system.

## 3 NEW DEVELOPMENTS

Water systems are the best option if you're looking to add an extension to your home or are embarking on a new-build project. It requires more space for the piping so the floor level may have to be raised, which may not always be possible in an existing space. You will need a specialist to lay the pipes and link it up to a boiler or solar water heater system.



Pictured are the Bert & May Alexis encaustic tiles, priced at £225 per metre

## 4 INSTALLATION OPTIONS

The two most popular system types when it comes to water underfloor heating are screed and retrofit. A screed system is installed during the building stages, whereas a retrofit system is installed in an existing property, and will use a dry board or a castellated panel to hold the tubing in place. Going for a retrofit system is generally the quicker option out of the two.

## 5 WARMING UP

Installing a water-based system can also be good news for your boiler. Warm water underfloor heating systems can generate floor temperatures of around 23–32°C. This is at a lower temperature than radiators, meaning that this type of system can be more economic and an efficient way of heating your home.



## Electric DRY SYSTEM

If you're looking for ways to keep your home toasty through the rest of winter, then electric underfloor heating is a good way to add extra warmth to an already existing room. A network of wires or mats are installed under the floor and are then connected to an electricity supply which heats up, and warms the floor and the rest of the room.



# 7

### MEASURING UP

The electric system that you install will depend on the size of the room.

There is the option of using loose-fitting wiring which is flexible enough to fit into smaller spaces – such as an en suite bathroom – electric cable systems or heating mats, which work best over larger areas. As electric systems tend to be quite thin, they are fairly easy to install. Pictured is the DEVI<sup>®</sup>mat from DEVI.

# 8

### WINTER WARMER

Are you keen to warm up a cold bathroom this winter? Then electric underfloor heating is said to be the most popular way of heating the space, but do be aware that there are extra factors to consider. Warmup advises that proper water drainage and waterproofing of the area is essential for safety reasons.

# 6

### ADDITIONAL LUXURY

If you are interested in using underfloor heating as a secondary source of heat, to take the chill off the tiles in a kitchen or bathroom for example, then an electric system is an ideal option for that purpose. Do be aware as well that wood, vinyl, laminates and even carpet flooring can be suitable for underfloor heating. Electric can make more of a dent on your bills so it's great to use as an extra heat source for those cold winters, and unlike radiators, it doesn't take up any extra space.



STON-KER floor tiles in Rodano Silver, 80x80cm, are priced at £107 per sq. m, from Porcelanosa

*'Underfloor heating provides the most efficient and comfortable radiant heat than any other heating system, and consistently delivers substantial energy savings. It is the perfect solution for whole house heating or for individual rooms, and is suitable for all types of projects'*

**Joan Pask**, group marketing manager at Warmup

# 9

### ECO ANGLE

To reduce costs when installing an electric system, a more energy efficient option is to combine it with a thermostat to give you full control over the amount of heat you're getting. Gaia Climate Solutions offers the Devireg<sup>™</sup> Touch, a thermostat designed for electric underfloor heating. It has an open window function which cuts off heating to a room when any significant drop in temperature is detected, helping to reduce heat and energy loss.

# 10

## COMPACT SPACES

PERFECT FOR SMALLER ROOMS, ELECTRIC IS A GREAT OPTION TO CONSIDER, BUT TAKE NOTE THAT THE RUNNING COSTS CAN BUILD UP IN THE LONG TERM. ACCORDING TO ADVICE FROM NU-HEAT, ELECTRIC CAN COST UP TO THREE TIMES AS MUCH AS GAS, SO IT WILL COST MORE TO RUN THIS TYPE OF SYSTEM, IN A LARGER KITCHEN FOR EXAMPLE, TO ACHIEVE THE SAME PERFORMANCE WHEN COMPARED TO A WATER-BASED SYSTEM.



## EXPERT ADVICE

HEATHER OLIVER PRODUCT DEVELOPMENT MANAGER AT NU-HEAT

**1** A key point is to know how much insulation your property already has before going ahead and installing underfloor heating into your home. If there are low levels of insulation then the heat losses will be very high so it might not be a suitable source of warmth for your property. It helps to source a good design and supply company who will be able to check this for you in advance.

**2** Be sure to confirm beforehand whether your heat source is a boiler, biomass boiler or a heat pump if you are looking to invest in water underfloor heating. Any warm water system can be paired with a boiler, but not all are suitable with a heat pump. A heat pump performs the most efficiently when running at lower temperatures than a boiler, and a good supplier will be able to advise on the right solution for you and your home.

**3** The type of flooring that you plan on using can make a difference to the response time of a system, as well as to the type of system that you choose. Hard surfaces like stone and ceramic tiles are the best, as they have the least resistance and transfer heat more effectively.

Pictured is the Carrara honed marble wall and floor tiles from Mandarin Stone, which are priced from £69.53 per sq. m



# CLEAN & AIRY

CHOOSE THE PERFECT COOKER HOOD FOR  
YOUR KITCHEN WITH OUR ROUND-UP OF CEILING,  
WALL-HUNG AND DOWNDRAFT MODELS

FEATURE **LUCY MACDONALD**

## Blanco by Gutmann Silla

Offering a unique design similar to an upside down

T-shape, the premium

Silla hood is made of top quality stainless steel with an illuminated central glass panel. It has a powerful

extraction rate and the

option of external, internal and recirculating extraction.

**FEATURES** 1,200m<sup>3</sup>/h max extraction rate;

59dB max noise level rating **DIMENSIONS**

H70-90xW110xD30cm

**PRICE** £3,300



If you're in the market for a new cooker hood the amount of choice on offer can seem overwhelming. A great starting point is to consider the design and size of your kitchen to narrow down which style of hood will be most suitable. A statement hood with a super powerful extraction rate is ideal for a larger kitchen, while a recessed model with a quiet noise level rating is perfect for an open-plan cooking area. Work out how large the room is first to ensure that the model has the correct level of power to effectively get rid of odours. Whether you opt for ceiling, wall-hung or downdraft, seamless or statement, we have the ultimate cooker hood selection for you.

## CEILING

When it comes to ceiling hoods there's an abundance of different styles, sizes and materials on the market. You could go for a bold, design-led model like the Blanco Silla or keep it hidden with a recessed model like the DC9635X from Gorenje. Andrew Hegarty, brand manager at Pando, says that: 'A key benefit of ceiling extraction is you can be assured that ceiling hoods will cover your hob area for optimum performance, and also the availability of powerful motors, which is an important consideration for kitchens that are in heavy use.'



### AEG X99484MD1 Puzzle

New from AEG is the Puzzle island hood. It features four speeds, including an intensive setting, as well as an ActiveHeat sensor which automatically adjusts the fan speed so it's always at the optimum level. It also has electronic glass touch controls with LED display for quick and easy control. **FEATURES** 715m<sup>3</sup>/h max extraction rate; 60dB max noise level rating **DIMENSIONS** H62xW90xD55cm **PRICE** £1,399



### Baumatic PV372GL90

This circular hood can be complemented with a 90cm glass canopy to create both a functional and stylish design. It has three LED lights at the base, three speeds and it can be used in both extraction and recirculation modes. **FEATURES** 750m<sup>3</sup>/h max extraction rate; 60dB max noise level rating **DIMENSIONS** H97-117xW90xD60cm **PRICE** Around £380



### KitchenAid Architect

Introduce a touch of the industrial into your kitchen scheme with this stainless steel island hood. The Architect has four perimeter extraction speeds, halogen lights and can be fitted in either ducted or recirculation mode.

**FEATURES** 690m<sup>3</sup>/h max extraction rate;

58dB max noise level rating

**DIMENSIONS** H110xW120xD70cm

**PRICE** £924



*'A great extractor is one that looks incredible, performs powerfully and also works extremely quietly, as it is meant to be seen and not heard!'*

**Owain Harrison**, marketing director at Baumatic



### Best Vintage

Add a touch of vintage glamour to your cooking area with this model from Best. While this doesn't have the most powerful extraction on the market, this design-led polished stainless steel hood has four different speed settings, uses perimeter extraction and has electronic soft touch control. **FEATURES** 390m<sup>3</sup>/h max extraction rate; 69dB max noise level rating **DIMENSIONS** H83-125xW63xD63cm **PRICE** Around £1,849





#### John Lewis JLBH520

This stunning pendant hood from John Lewis makes a stylish statement. Designed for a central kitchen island, it has the option of three power levels, and blue LED lighting which creates a contemporary look while efficiently illuminating the cooking area. It is also easy to operate with wipe-clean touch controls.

**FEATURES** 600m<sup>3</sup>/h max extraction rate; 66dB max noise level rating **DIMENSIONS** H47xW51xD51cm **PRICE** Around £999



#### Electrolux EFA50700K

This black, round island ceiling hood features candle-style lighting to create a soft floating design in your kitchen. It has three speeds and electronic push buttons, as well as washable aluminium grease filters. **FEATURES** 559m<sup>3</sup>/h max extraction rate; 70dB max noise level rating **DIMENSIONS** H40xW48xD48cm **PRICE** £799



#### Miele DA3690 flush fit hood

Perfect for a minimal kitchen design, this slimline telescopic cooker hood fits flush into kitchen cabinetry to create a seamless finish. The motorised canopy can also be activated via a remote control.

**FEATURES** 640m<sup>3</sup>/h max extraction rate; 51dB max noise level rating **DIMENSIONS** H30xW90xD47cm **PRICE** £1,975



#### Gorenje DC9635X

If you're looking for a hood to complement the clean lines in your kitchen then this recessed stainless steel ceiling hood from Gorenje could be the perfect solution. It has three speed settings and can be operated via remote control.

**FEATURES** 950m<sup>3</sup>/h max extraction rate; 73dB max noise level rating **DIMENSIONS** H90xW60xD60cm **PRICE** £1,199

### Westin Design bespoke mirror box

Create a polished look in your kitchen with this statement bespoke mirror box concept hood. The model shown is completely bespoke and was made to designer Laurence Pidgeon's exact specifications. It has four speed settings with inverted filters and a quiet noise level rating, which makes it a great choice for an open-plan space.

Westin Design specialises in bespoke options, which can be made to any size, dimension and performance level.

**FEATURES** 1000m<sup>3</sup>/h max extraction rate;  
52dB max noise level rating

**DIMENSIONS** H40xW90xD40cm  
**PRICE** £2,500







### Faber Veil

Faber has introduced Veil, an innovative twist on the classic chimney extractor hood. The front panel has been engineered to give the effect of a piece of draped silk or a billowing veil, and it is available in Corian White, Matt Black and White. The LED lighting for this model also has a low level of energy consumption at just 2W. **FEATURES** 720m<sup>3</sup>/h max extraction rate; 69dB max noise level rating **DIMENSIONS** H50xW90xD36cm **PRICE** £1,199





#### Whirlpool AKR 799 IXL

Using intelligent 6th Sense® technology, this chimney hood from Whirlpool has the ability to set itself using the sensor readings to run the ideal power level whenever you are cooking, giving both performance and the maximum energy efficiency, without you needing to programme it in manually.

**FEATURES** 630m³/h max extraction rate; 65dB max noise level rating

**DIMENSIONS** H67-110xW90xD50cm

**PRICE** £449

### WALL HUNG

This popular type of hood, also known as chimney hoods, has a wide offering of different styles and sizes available, and can suit most kitchen set ups. They are installed against the wall, so therefore a ceiling or downdraft model would be best for use with an island, but wall-hung hoods can work well anywhere else in the kitchen. The beauty of this type of hood is that the sky is the limit when it comes to the designs that you can have. Whether you are after a sleek and subtle stainless steel model, a wow-factor statement number for a contemporary space, or a more traditional style hood, there will be something out there to suit your needs.



#### Pando P-960

Create a striking focal point in your kitchen with this unique wall-mounted contemporary design. Resembling a large frame, the P-960 is made from stainless steel and is available in black, red and white glass. **FEATURES** 1,100m³/h max extraction rate; 64dB max noise level rating **DIMENSIONS** H50xW100xD38cm **PRICE** £2,120



#### Franke Sinos hood

The Sinos wall-mounted model has an automatic cut-off timer which allows the hood to keep running for a few minutes after you have finished cooking,

to remove any persistent odours. It also has eight speeds, is controlled using a touch screen or an optional remote control and is available in black or white glass. **FEATURES**

850m³/h max extraction rate; 70dB max noise level rating **DIMENSIONS**

H50xW90xD16-33cm

**PRICE** £1,549



*'Extraction is important for the longevity of the home, including the furnishings and fabric of the building. A correctly installed hood will ensure room temperature is maintained'*

**Jennifer Spragg**, brand and digital marketing manager, Whirlpool



#### Elica Nuance

Integrate your cooker hood into your scheme with Nuance, an individual design that appears to come out of a cut in the wall. Not only that, you are able to paint it the exact colour as your kitchen walls if you wish for a truly seamless look. **FEATURES**

425m³/h max extraction rate; 62dB max noise level rating **DIMENSIONS**

H79xW76xD43cm

**PRICE** £1,300



## DOWNDRAFT

As the trend for open-plan living continues, downdraft hoods have increased in popularity. Sitting flush to the worktop, these hoods remain hidden when not in use and then rise into position when needed, perfect for freeing up space in a compact kitchen, complementing a minimalist design or for a combined cooking/living area. Craig Davies, managing director for Sub-Zero & Wolf UK, says: 'Downdraft extraction is a great option where the cooktop is situated directly in front of a window, if you have a very high or vaulted ceiling, or you just want to avoid any overhead ventilation. Make sure the downdraft itself is at least 35cm tall to effectively extract smoke and steam from tall pots and pans.' This particular type of hood is ideal for islands as it also provides protection from splash back during cooking as it is positioned quite close to the hob. **CKBB**

### BORA Basic

Are you looking for a multi-functional extraction system for a unique kitchen look? This four-zoned cooktop and integrated vapour extractor from Bora combine together into one single compact unit. It is operated through a central control panel, is available for both exhaust and recirculation mode and has an automatic safety shut down function.

**FEATURES** 400m<sup>3</sup>/h max extraction rate; No noise known noise level rating **DIMENSIONS** H20xW76xD52cm **PRICE** £2,280



### Caple DD910WH

Said to be the only downdraft hood on the market with white glass, this model from Caple uses an illuminating neon strip light when it rises from the work surface. It has touch controls, four speeds and an auto timer that continues for 10 minutes after cooking.

**FEATURES** 2100m<sup>3</sup>/h max extraction rate (DDMEXT4 motor); 59dB max noise level rating (DDMEXT1 motor) **DIMENSIONS** H31xW88xD74-105cm **PRICE** £2,100



### CDA EDD61

Perfect to use on an island so it can remain hidden when not in use, this versatile downdraft model from appliance brand CDA features a glass touch control panel, four speed settings and a 10-minute timer. It is also suitable for either ducted or recirculating installation and has dishwashable aluminium grease filters.

**FEATURES** 250m<sup>3</sup>/h max extraction rate; 58dB max noise level rating **DIMENSIONS** H30xW58xD12cm **PRICE** £1,200



### Smeg KDD90VX

A great option if you're after a seamless aesthetic for your island, this model is finished in a sleek combination of black glass and stainless steel, which will fit perfectly in a contemporary scheme. It also has three different speeds with an intensive 10-minute setting and an electronic display.

**FEATURES** 710m<sup>3</sup>/h max extraction rate; 70dB max noise level rating **DIMENSIONS** H41xW79xD12cm (above worktop) **PRICE** £1,400



### Neff I99L59N0GB AirDeluxe 300

Neff offers this polished stainless steel downdraft model from its range of hoods. Featuring touch control operation and a grease filter saturation indicator, it's also able to automatically run for 15 extra minutes at the end, to ensure that all odours have been whisked out of the room.

**FEATURES** 750m<sup>3</sup>/h max extraction rate; 71dB max noise level rating **DIMENSIONS** H65-105xW88xD35cm **PRICE** Around £1,359





### Wolf ICBDD30

This premium offering from Wolf has internal, external or recirculating filters to whisk away odours and smoke, with a powerful extraction rate of up to 2,028m<sup>3</sup>/h. It is operated using a remote control, which can be placed up to 2.7m away from the model, a Delay Off function and a Filter Clean Indicator.

**FEATURES** 2,028m<sup>3</sup>/h max extraction rate; No noise level rating **DIMENSIONS** H35xW76xD51cm **PRICE** £1,584





# matki | SHOWERING



EauZone Plus 10mm Sliding Door for Corner or Recess. Contemporary style, technical innovation  
Beautifully engineered in the UK



Sale now on  
up to 40% off

west one bathrooms ltd.



Battersea | Clerkenwell | Knightsbridge | Mayfair | Notting Hill | Wandsworth | Kent | Surrey

[westonebathrooms.com](http://westonebathrooms.com)

[@westonebathroom](https://twitter.com/westonebathroom)

0333 011 3333

# Bathrooms

## SHINING OPULENCE

*Adorn a traditional  
metallic bath with  
luxurious towels in  
rich, jewel colours*

Proaza shower curtain, £39; Kotra  
towel collection, from £6; Cuaio  
bathrobe, £55; Alvito towel collection,  
from £4; Asola slippers, £49; Penela  
bath mat, from £17, all Urbanara

PATTERNED TILES • CHOOSING YOUR SHOWER • DESIGN NEWS



# Bathroom News

*The latest launches and our favourite bathing beauties*

WRITTEN BY KIRSTEN JONES



## ON THE SHELF

Organise your bathing products with the spacious three-tier corner basket from The Sterlingsham Co Ltd. Designed and handmade in Britain, the basket is available in polished brass, chrome, nickel, matt nickel, bronze and gold finishes. Shown here in nickel, it costs from £375. [sterlingsham.co.uk](http://sterlingsham.co.uk).



## Vanity fair

Take a step back in time and enjoy a 1920s-style bathroom with the Nouveau washstand from Catchpole & Rye. Crafted from marble and cast-metal, this detailed piece can be fashioned to suit your personal taste. Choose from a bespoke painted finish or a burnished, polished or copper metal coating. Prices start from £1,800. [catchpoleandrye.com](http://catchpoleandrye.com).



## WALL FLOWER

This round, pleated light from the Pure Bathroom Collection offers subtle style with a beautiful Chiffon silver shade and ornate chrome base. Part of the Burlington Bathrooms range, the classic design will blend seamlessly into any scheme, providing an element of neutral Parisian style while lighting up its surroundings. It's priced at £175. [purebathroomcollection.co.uk](http://purebathroomcollection.co.uk).



## EBB AND FLOW

Equipped with patented water and energy-saving functions, the Cea Innovo taps from Laurence Pidgeon offer rotating spouts and flow limiters to reduce water usage. The range includes basin, bath and shower taps in a number of finishes. This wall-mounted two-way diverter in satin finish is £724.50. [laurencepidgeon.com](http://laurencepidgeon.com).

Devon & Devon launched their classically inspired Capitol bathtub last September at Decorex 2014. Providing the ideal centrepiece for a traditional bathroom, this generously sized design boasts a durable enamelled cast iron interior, while the external aluminium panelling can be customised in one of 213 colours. It costs £7,999. [devon-devon.com](http://devon-devon.com).



## Dark DECADENCE



## EAU SO STYLISH

Named after the French term for 'all-purpose', the Passepartout modular furniture from OASIS is made in a range of sizes and offers both wall-hung and floor-standing designs. Choose from 38 standard gloss or matt lacquer finishes and wood finishes in Grey Oak, Tobacco Oak and Gordan Oak. See the range on display at the new OASIS showroom in Knightsbridge. The vanity unit shown costs £2,604 complete with mirror. [oasisgroup.it](http://oasisgroup.it).



## LET'S SET SAIL

Achieve a nautical theme with the new Ship shower curtain from Lush Design. Printed in Icy Spearmint and Teal Blue, the design sketches a tale of the seven seas to enjoy as you bathe. Two further styles make up the collection, including exotic Jungle with giant pink and orange plants, and Fish which depicts a serene river with silvery sea life swimming below. Each curtain, £58.75, can be combined with matching beakers and soap dish. [lushlampshades.co.uk](http://lushlampshades.co.uk).



ONE Slider corner enclosure with black frames with copper and black disc details, priced from £996, Matki

## Dressed to impress

We love the welly wearing Labrador statue in this image, but what we're really impressed by is the new Matki ONE Collection of designer enclosures. Created to sit in harmony with your current bathroom style, the collection offers a choice of coloured frames and disc details to match your palette. Even the handle and door details can be customised to taste, whether you want a metallic brass or bright coloured finish. Designs include sliding doors, pivots for corners and recesses, curved corner doors and the quintesse angled door. [matki.co.uk](http://matki.co.uk).

## Seeing THROUGH

Inject a delicate, feminine touch with these fluted glass accessories from Waterworks. They're handcrafted in Italy using ancient glass making techniques, while their detail is formed with wood moulds. Available in clear and smoke, the soap dish, dispenser, tumbler and container are priced from £126.80 each. [uk.waterworks.com](http://uk.waterworks.com).







## TOTAL ECLIPSE

Eclipse is a sculpted series of brassware designed by Giuseppe Bavuso for FIMA Carlo Frattini. With a built-in double mixer to control water flow and temperature, the shower costs £3,632



# Splash OUT

*Start the day with an invigorating shower – these statement designs will add wow factor to any scheme*

FEATURE HAYLEY GILBERT



## RIGHT ANGLE

Above For a clean, contemporary look, the Vertical shower with Just Rain rainshower and wall fixing in polished stainless steel is £12,891 from Alternative Bathrooms

## WATER DROPLET

Above right Gessi's Goccia shower heads can be used in a cluster of three or more to create a droplet effect. In chrome, white, brushed chrome or black, they cost from £938 each at C.P. Hart

There's nothing like a steaming hot shower to start the day and when it comes to choosing a new design there are plenty of shapes, styles and sizes to choose. 'It's important to look for a shower that delivers a powerful performance, and looks the part too,' says Georgina Spencer, marketing manager at Roca. 'If the shower is being chosen for the family bathroom then look out for features such as thermostatic controls to ensure everyone can shower safely. Multi-functional showers or columns with a large overhead shower and separate hand shower will also give you the variety of options needed for various family members, and all within the functionality of one sleek unit.'

There are four main types of shower – electric, power, mixer or digital. Electric showers heat water as they go, so you only need a cold water supply. This prevents wasting heated water and they still work if your boiler breaks down. Power showers combine hot and cold supplies and have a built-in pump, which strengthens the flow and is ideal for low pressure systems. Mixers combine hot and cold water – some work with any system while others are designed for high or low-pressure. Digital designs come with a small processor box, which mixes hot and cold to the required temperature.

'Some digital showers can include touch screens, LCD displays or colour-coded lighting,' adds Joy Chesterton, director at bathroom brand Ripples. 'So as well as eco settings and separate remote, you can also have greater control over the temperature while showering.'

One of the latest trends at the moment is to mix and match different shower controls, as Mark Booth, sales and marketing director at Dornbracht, explains: 'We refer to this as sampling, which is the use of products from different ranges, combined into one bathroom package. In terms of design, copper is leading the way and our new cyprus finish, produced from 18-carat fine gold and genuine copper introduces a lovely warmth to the bathroom.' **EKBB**





### CURVE APPEAL

The Essential 2.0 hydromassage shower column from Roca brings spa-like luxury to the bathroom with a four-way diverter to switch between an overhead rose with rain function, pencil-style handset and upper and lower jets. It costs from £929

## Choosing a suitable shower

Before you begin selecting your favourite design, you'll need to be familiar with the type of water system your home has in order for it to be compatible. 'A mixer shower, which uses either a mechanical valve or digital processor to control flow and temperature will require a water system that heats and then stores a supply of hot water,' explains Aqualisa's senior channel marketing manager Janet White. 'This could be a mains-fed or gravity-fed system, where hot water is stored in a tank, usually in the loft. Alternatively, you may have a combi-boiler, which heats hot water as it's needed. Assessing your water pressure is also an absolute must. Typically, a mains-fed system or combi-boiler will provide good pressure. However, a gravity-fed system where the water tank is located in the loft will often need a helping hand in the form of a pump. A digital shower is another option, where the pump is integrated into the shower's processor and negates the need for a standalone pump, saving space in the bathroom too.'

*'If the shower is being chosen for a family bathroom then look for features such as thermostatic controls to ensure everyone can shower safely'*



Left With a selection of body jets and thermostats, you can mix and match to create the perfect shower. Soft shower head, from £2,230, Zucchetti

Right With three movable body jets and handshower, the Rococo chrome shower column from Pure Bathroom Collection costs £745

Far right The Dharma thermostatic shower panel from Frontline Bathrooms, £595, includes a head shower with water blade, built-in body jets and handshower





## TILE STYLE

The Memoria shower column from VitrA features an integral cascade flow shower head and costs from £1,666. It also has a handshower to the side and you can have your choice of tiles applied to the column for a personal touch







### PERIOD CHARM

Above Matki has introduced a soft nickel finish to its Victorian-style Swadling Invincible thermostatic range of brassware. With prices from £1,188, it's also available in antique gold or chrome

### SHINE ON

Above right Keeping up with the trend for copper and brass in interior design, the Dalby thermostatic shower from Drummonds has a beautiful brass finish with Classic 300mm rose and costs £2,766

### SPA STYLE

Right Triton's Nene diverter with body jets is the ultimate in luxury showering with an overhead deluge and two-mode body jets. Prices start from £300



## Shower head styles

Fixed shower heads are ideal for smaller spaces, as they are less obtrusive, while adjustable shower heads are ideal for families and those who want something more versatile. Some designs feature both a main shower head and smaller handshower, ideal for a quick hair wash or cleaning the enclosure. To conserve water, look for eco-spray settings and adjustable spray patterns and to make cleaning easy, choose a model with anti-scale nozzles. For the ultimate in luxury, add a series of body jets for an invigorating massage at the end of a hard day.



## DECADENT DESIGN

Created by Sieger Design for Dornbracht, the MEM Rainshower with wall fixing, Water Sheet cascade spout, hand shower set, xTOOL thermostat and towel bar costs £8,074 and is shown in a cyprum finish made from 18-carats





*'For some, showering has evolved into a complete spa wellness experience incorporating variable programmable body jets'*



## FAMILY FAVOURITE

Above Aqualisa's new Rise DCV offers up to three different outlets that combine your choice of fixed drencher heads, adjustable shower heads and even bath fills. The walk-in shower with drencher and slim handshower costs from £745

## FLEXIBLE OPTION

Above right Alternative Bathrooms' Rainshower, £703, can be teamed with a sleek, slimline handshower for a flexible showering solution, £378, while the thermostat with two-function control, £900, keeps your preferred temperature



JANE GILCHRIST  
DIRECTOR,  
ALTERNATIVE  
BATHROOMS

Q&A

### What is the latest in showering technology?

For some, showering has evolved into a complete spa wellness experience incorporating variable programmable body jets and even a horizontal experience in ATT by Dornbracht. For most of us it is the essential start to a busy day. Take the new digital technology from Crosswater for example. It allows each family member to exactly control the functions and set the temperature to their personal preferences. Their app also allows your smart phone

or tablet to operate the shower remotely so it is perfect the second you step in.

### How about water-saving options?

All manufacturers are developing or have developed products to save water and adhere to regulations. This applies particularly to new-build projects. The addition of air, for example in the Hansgrohe shower heads, enhances the experience. A few manufacturers like Methven are focusing on delivering a great shower with less flow.

### What does the future holds for bathroom technology?

Showers will continue to get bigger and have more and more functions. All manufacturers will strive for an enhanced experience with less water pressure and more functions with less flow. In our fast-paced lives the shower will continue to evolve into an experience but hopefully using less water. The challenge for shower companies now is to provide the experience we all enjoy with less water, as most of us are not prepared to compromise on the experience.

### SPA EFFECT

Create a luxurious spa-style retreat with a walk-in wet zone featuring the Architectural Metal Rime shower tray, £163, with Futurion glass shower screen, £1,286, and Cult wall-mounted shower mixer, from £183, all Villeroy & Boch







#### WATER WISE

Left: The Goccia shower range, priced £782 for the brassware shown, features cutting-edge technology that allows for a 50 per cent saving of water, without compromising on form or function

#### SELECT CHOICE

Above: With the Hansgrohe Select E300 3 Jet, choosing the water spray is simple thanks to the new Select buttons on the handshower, overhead shower and ShowerTablet. It's priced £1,776 from Ripples

*'The challenge now is to provide the experience we all enjoy with less water, as most of us are not prepared to compromise on the experience'*

#### FINE FINISH

The Skidoo Totem was designed by Carlo Colombo for Teuco and is available in a chrome or gold finish. With two showers - overhead and handshower for flexible showering, both with anti-limescale functions, it costs £2,304. Team with a sleek limestone floor and walls for a seamless, urban look



# LAURA ASHLEY

[lauraashleybathroomcollection.com](http://lauraashleybathroomcollection.com)



FURNITURE • SANITARYWARE • BRASSWARE  
exclusively by  ROPER RHODES

Available at selected bathroom retailers throughout the UK  
Visit our website to find your nearest store



FOR THE WAY YOU LIVE

SPEND OVER £750 DURING JANUARY - MARCH 2015 & GET A  
**£50**  
**LAURA ASHLEY**  
**GIFT VOUCHER**  
See website for  
Terms & Conditions





# Mixing TASTES

*Inject modern flair into a country-style space with geometric floor tiles and vibrant fabrics. Choose bold blue towels, botanical prints and rich walnut furniture to highlight glossy brassware*

COMPILED BY KIRSTEN JONES

**1** Heracleum II LED suspension light, £2,138, Rume **2** Palermo tiles, £360 per metre, Bert & May **3** Diptique Baies scented candle, £40, John Lewis **4** Lorca Coralie MLF2196-01 fabric, £44 per metre, Osborne & Little **5** Henry low profile three-hole deck-mounted tap with metal lever handles in unlacquered brass, £1,198, Waterworks **6** Barber Wilson wall-mounted manual shower mixer with fixed riser and rose, £1,207, Holloways of Ludlow **7** ILBAGNOALESSI One drawer element, from £1,112, Laufen **8** Geminus roll top bath in Burnished Bronze, from £1,634, The Albion Bath Company **9** Christy Supreme Supima Hygro towels in Deep Sea, from £3.50, Christy Towels

FOR STOCKISTS, SEE PAGE 150





## BATHROOM FEATURES

Spey freestanding **bath** with bespoke painted exterior in Salmon Pink, £4,980; Classic bath and shower **mixer** in brass finish with Walnut lever handles, £1,578; H-Stands and Plunger **waste unit** in brass, from £1,014; Bath **rack** in brass, from £534; Classic pop-up **basin mixers** in brass finish with Walnut lever hands, £1,290, all Drummonds



## ALL WHITE

The Tile of Spain Vives Raspail Rivoli wall tiles in Blanco are available in a wide range of colours and detailed patterns. They're £145 per sq. m and available from Porcelain Wood





# Taking shape

*Create an eye-catching statement with these patterned tiles*

COMPILED BY KIRSTEN JONES



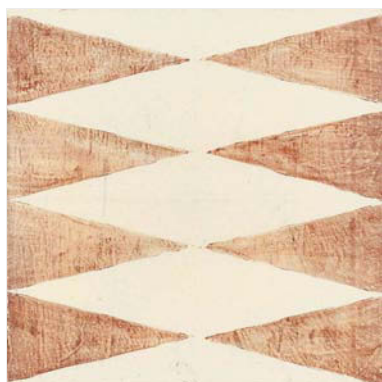
1



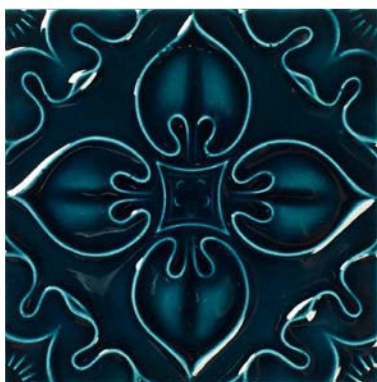
2



3



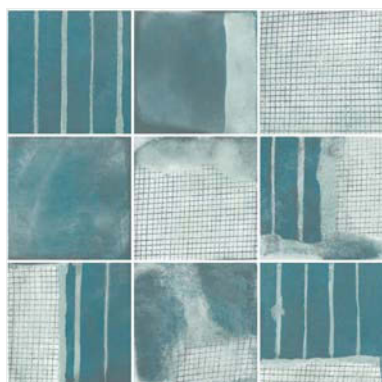
4



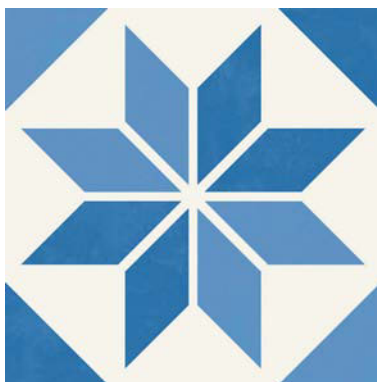
5



6



7



8



9

**1** Ceramica Pintada MCQ-19 tiles, from £2,250 per sq. m, Ann Sacks **2** Petrol Otura handmade tile, £225 per m, Bert & May **3** Bolero Grey multi-colour ceramic matt tile from the Odyssey Grande collection, £99.99 per sq. m, Original Style **4** Fresco Patterns diamond ceramic tile, £8.50 per tile, Douglas Watson Studio **5** Empress Helena wall tile in Tourmaline, £16.99 per tile, Fired Earth **6** Illusion neutral three tone block effect tile, £35 per sq. m, British Ceramic Tile **7** Astratto Aquamarine grid, stripe and block colour tiles, from £99.75 per sq. m, Mandarin Stone **8** Tile of Spain Aparici Vanguard5 porcelain tile in System Natural Blue, £91.40 per sq. m, Aparici **9** iGattipardi Fabrizio patterned tile, from £90 per sq. m, Piazza Tiles

FOR STOCKISTS, SEE PAGE 150



**RH REED HARRIS**

New Tile Collections In Store  
or Shop Online at

**we<sup>love</sup>til.es**

27 Carnwath Road, Fulham, LONDON SW6 3HR.  
Unit 7 iO Trade Centre, Deacon Way, READING RG30 6AZ.

SACW

STONE & CERAMIC  
WAREHOUSE



CERAMIC TILES

LIMESTONE

SLATE

MOSAIC

MARBLE

LEATHER PORCELAIN

METALICS

CERAMIC WOOD



**Winter Sale Now On!**

The Stone & Ceramic Warehouse  
51 - 55 Stirling Road,  
Chiswick,  
London, W3 8DJ

Walton Ceramics  
21 Walton Street,  
Knightsbridge,  
London, SW3 2HX

**020 8993 5545**

**WWW.SACW.CO.UK**

**ELLIS**  
furniture



made in  
Great Britain

Enjoy the benefits  
of becoming an  
Ellis retailer and  
contact us today...

- Short lead times and national supply
- Full marketing support package
- Rigid made to order furniture
- Leading design software
- Great retailer rewards
- Exclusive areas available

**Become part of it...Call 01484 514212**

[www.ellisfurniture.co.uk](http://www.ellisfurniture.co.uk)



*Stone that is as unique as you are*



GRANITE

MARBLE

CAESARSTONE

ZODIAC

OKITE

**Stewkley  
Stone**

WORKTOPS & FIREPLACES

Tel: 01525 240711

[www.stewkleystone.com](http://www.stewkleystone.com)

Workshop and Showroom

Unit 1, Manor Business Centre, High Street South,  
Stewkley, Leighton Buzzard, Bedfordshire, LU7 0HR



# Bedrooms

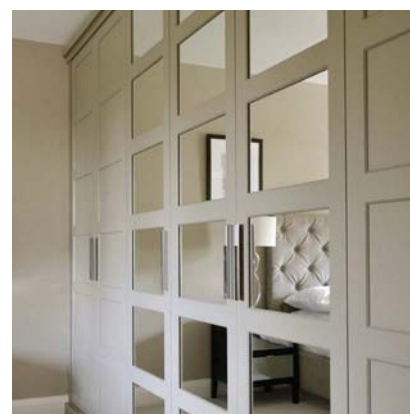
## PERIOD REVIVAL

*Use burnt orange cushions and rich floral bed linen to enliven Georgian-style wall panelling*

The Living by Christiane Lemieux collection includes the Georgina double bedstead, £949; Mono Ikat pillowcase pair, £30; Clementine linens, from £25; Velvet reverse cushion in Rust or Charcoal, £35 each; Wool mix throw in Rust, £80, all House of Fraser

DESIGN NEWS • INSPIRING HOTEL SUITES • QUILTS & TROWS





## A COLLECTION OF LUXURY WARDROBES

01483 22 55 00

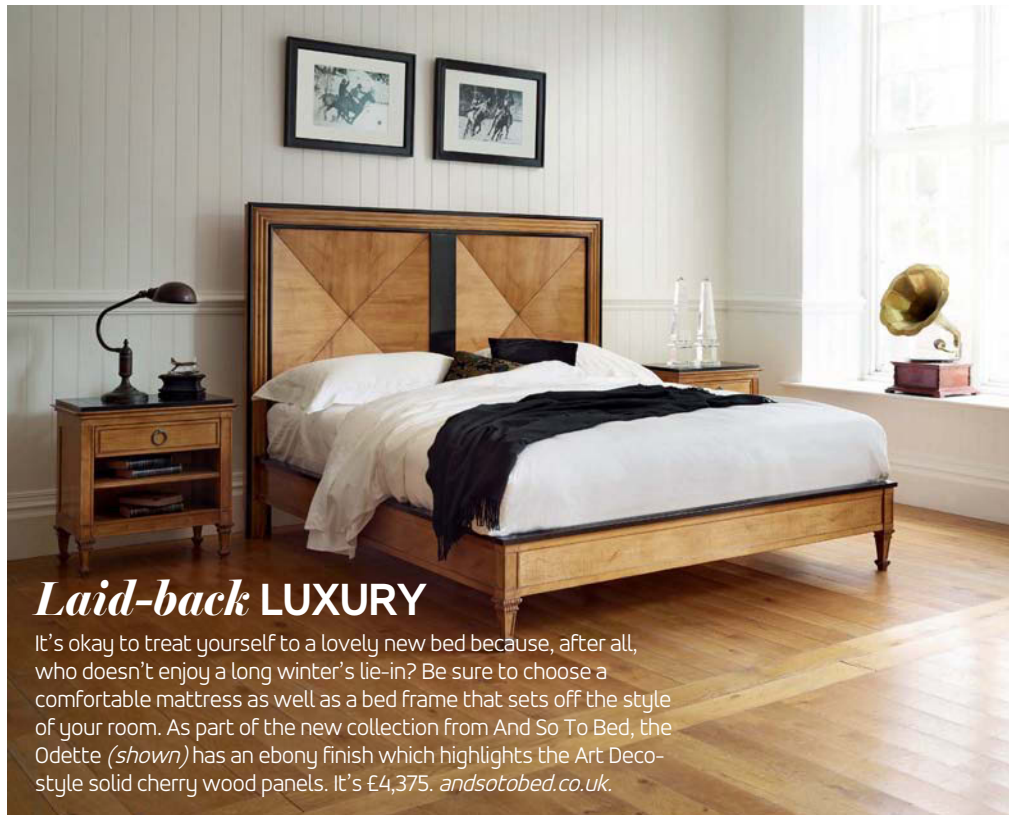
To view our online brochure & find your nearest designer  
[theenglishwardrobecompany.com](http://theenglishwardrobecompany.com)

THE  
 ENGLISH  
 WARDROBE  
 COMPANY

# Bedroom News

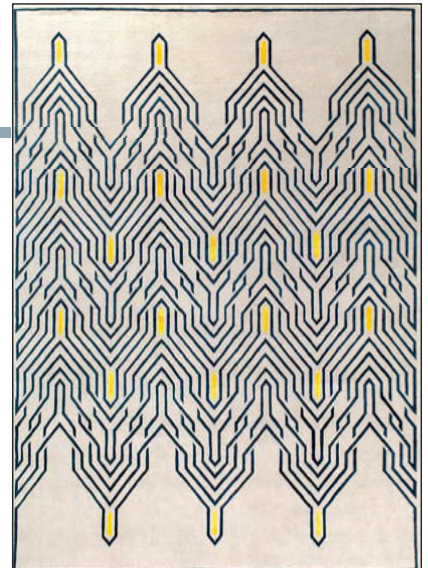
*The latest launches, trends and inspiring things*

WRITTEN BY EMMA FOALE



## Laid-back LUXURY

It's okay to treat yourself to a lovely new bed because, after all, who doesn't enjoy a long winter's lie-in? Be sure to choose a comfortable mattress as well as a bed frame that sets off the style of your room. As part of the new collection from And So To Bed, the Odette (*shown*) has an ebony finish which highlights the Art Deco-style solid cherry wood panels. It's £4,375. [andsotobed.co.uk](http://andsotobed.co.uk).



## At your feet

With his first rug collection for Jacaranda, Thomas Griem has been inspired by aesthetics of the 1920s. Chrysler (*shown*), is named after the famous skyscraper in New York, with gold yellow and blue detailing. Each rug is traditionally hand-knotted by Tibetans in Kathmandu, Nepal. From £4,300. [jacarandacarpet.com](http://jacarandacarpet.com).

## SWEET SCENTS

We love the new, natural soya wax candles from the Jam & Preserve collection at Urban Apothecary. In pretty glass jars, you can choose from Apricot Jam, Lemon Curd, Bramble Jelly or Orange Marmalade. £35 each. [urbanapothecarylondon.com](http://urbanapothecarylondon.com).



## WHAT'S IN THE BOX?

Useful for storing blankets or kid's toys, these handmade trunks in metal and antique leathers are as practical as they are attractive. With vintage appeal, they come in different sizes, shapes and finishes. The Paris Biker in leather (*left*), is from £850, and Coleby trunk, is from £375. [haloliving.co.uk](http://haloliving.co.uk).



## SHEER BEAUTY

Featuring delicate and sophisticated fabrics, take a look at the Momentum Sheers and Structures 2 collection from Harlequin. The designs can be used together and layered with a selection of semi-plain textures or three dimensional styles. Yoko (*shown*) features satin disks that have been applied to a satin sheer for a textured look. It's £45 per metre. [harlequin.uk.com](http://harlequin.uk.com).







## SIZING UP

Suited to a large room and particularly one with floor-to-ceiling windows, the new extra wide slat size from Shutterly Fabulous means more choice and flexibility for your space. All shutters can be measured and fitted to any type of window or door. From £290 per sq. m, including home consultation and installation. [shutterlyfabulous.com](http://shutterlyfabulous.com).



## MAKING LIGHT

With a characteristic dome-shaped head, the Cap table lamp makes a great bedside companion. Its adjustable shade means you can rotate to alter the direction of light. They're available in White, Blush, Misty Blue and Midnight Blue and are £290 each.

[normann-copenhagen.com](http://normann-copenhagen.com).

## SNUGGLE & SLEEP

Charcoal, grey and white shades make up the palette of the new range of Superior bedding by Lexington.

You can dress your bed or guest bedroom with a choice from

Egyptian cotton bedding, jacquard woven blankets and cashmere throws.

Prices start from £89 for the sateen sham.

[lexingtoncompany.com](http://lexingtoncompany.com).



## Hide & SEEK

Once you've found something you love, there's no need to hide it away. This is why we want one of these hand-cut leather hide rugs for every room.

With a monochrome colour palette, they adopt Nordic beauty and simplicity. Opal (*shown*) in black is from £645. [wovenground.net](http://wovenground.net).

## On the FLIP SIDE

We've been seeing leather appearing on furniture and upholstery a lot more recently, and Viaduct's latest range of chairs is no exception. The casual New York chair (*shown*), designed by Sergio Bicego for Saba, is made with interchangeable and reversible upholstery for a distinctive and eclectic look. It's a warm and sumptuous leather, the kind that improves with age.

From £1,366.

[viaduct.co.uk](http://viaduct.co.uk).





# Good Morning!

We believe that day and night are one.

Sleep well, live better with a Vispring bed.

## VISPRING

Luxury Beds - London 1901

LONDON - NEW YORK - PARIS - MILAN - BERLIN - MOSCOW - BEIJING - HONG KONG

[www.vispring.co.uk](http://www.vispring.co.uk)





## DESIGN DESTINATION

# Inspiring Spaces

A mix of stylish design, carefully chosen antiques and home comforts make for this cool and understated hideaway hotel

PICTURES LUKE WHITE AND ANNELI MARINOVICH | WORDS CIARA ELLIOTT

Stepping off the cobbled streets of Rye and into the low-lit reception area of The George Hotel feels a bit like entering a glamorous movie set – which isn't surprising when you learn that the hotel owner's previous job was as a set dresser on films such as 'An Ideal Husband', which was penned, of course, by the flamboyant Oscar Wilde.

'We'd always wanted to run a hotel,' says Katie Clarke, who along with her hospitality consultant husband Alex, realised the potential in the 16th century coaching inn when buying in 2004. 'We had been looking for the right property but when this came up I'd just had our second daughter. There was some initial reluctance, but when I saw it I fell in love.'

Within weeks the couple had sold their London home and moved to the small East Sussex town. Working with interior designer Maria Speake, Katie used her experience from her film days to moodboard ideas for individual rooms as well as to source some interesting props and to use bold colour and different design styles to achieve a personalised look.

'It's an eclectic process,' says Katie. 'We start with a theme for the room in mind and then we work together on colours and fabrics as well as find the right mix of art, design and handcrafted furniture.'

The result? A chic hotel with a mix of bedrooms. From sleek chalet style to a hint of Deco, here are some stand-out design features that caught our eye. **CKBB**



### Katie Clarke

CREATIVE DIRECTOR, THE GEORGE HOTEL  
Following a successful career as a set designer and buyer for films, Katie turned her creative eye to interior design. Along with her husband Alex they bought a dilapidated yet functioning hotel and turned it into a destination design location, sensitively refurbishing the warren of interconnecting buildings which now comprise the charming George Hotel in Rye.



### BATHE IN GLORY

**Above** Natural materials and muted colours combine to create a serene scheme in this en suite bathroom. The roll top bath is from William Holland

### COSY NOOK

**Left** The idea for a separate 'bunk room' came from a hotel the family had stayed in before. The couple have three girls – Esme, seven, Olive, 10 and Matilda, 12. 'I wanted to create a luxury version for The George,' says Katie 'Here, it also cleverly hides the headroom from the stairs below'







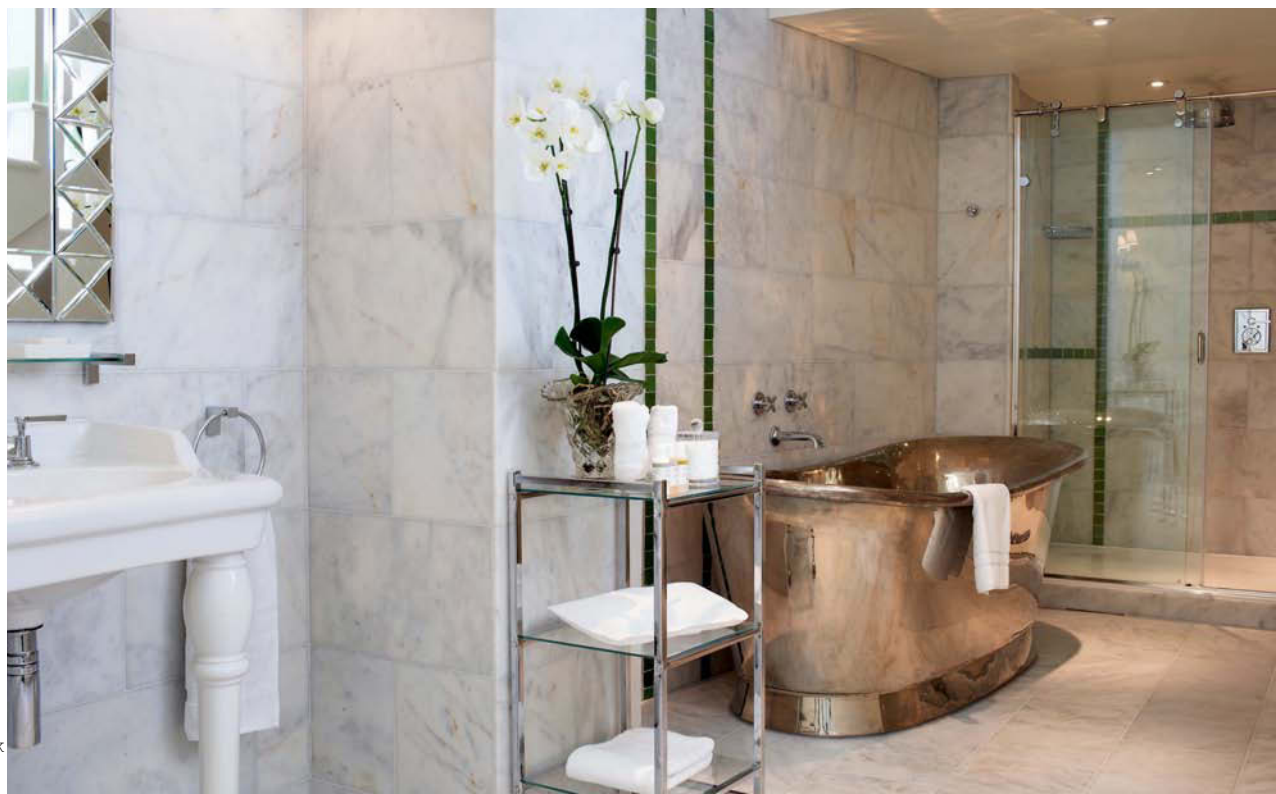


## SCENE IN GREEN

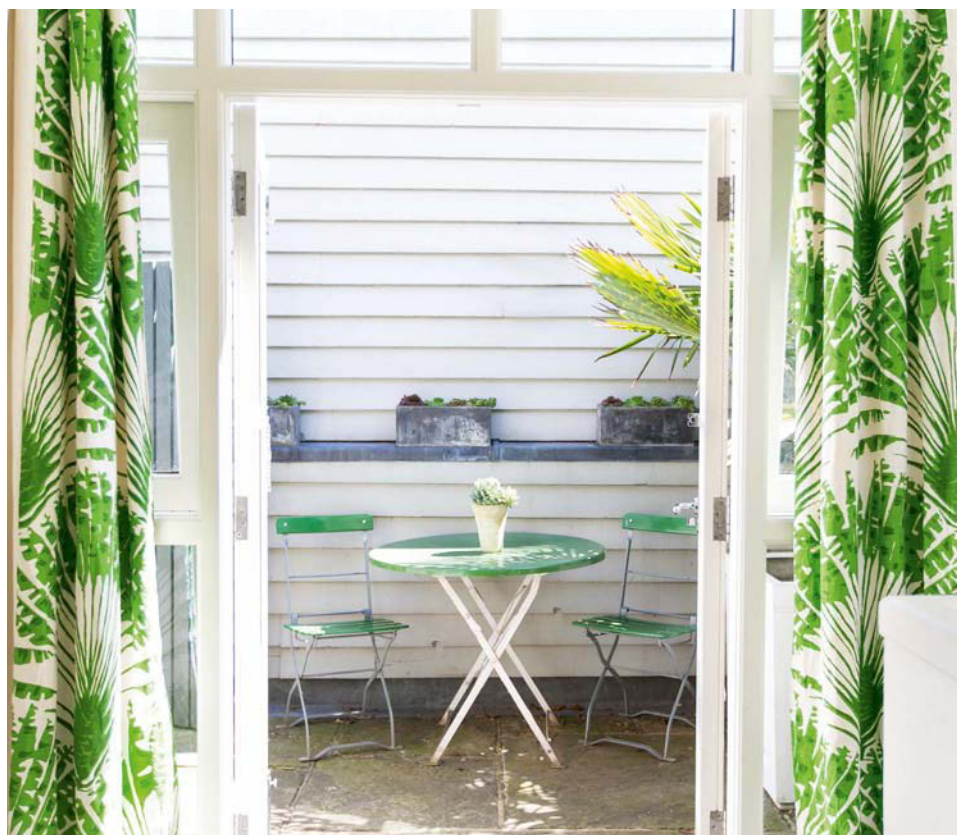
**Above** The bespoke round bed is from Vi-Spring and comes with a customised headboard that can be ordered through The Shop Next Door. The wardrobe and dressing table are designed by Katie and made by Holland of Rye

## A NEW LEAF

**Right** The nickel roll top bath is from William Holland. All other bathroom fixtures, including the taps, sink and toilets, are from AJP bathrooms



*‘This suite is inspired by my grandmother’s house in Miami where I used to stay as a little girl. People love the bespoke round bed and the huge bath’*



## Q&A

**Did your previous career as a set designer inform the hotel design?**

Yes I think this definitely had a bearing on the look. I worked overall on the project with interior designer Maria Speake, whose style is amazing. We did get a bit overexcited at the start and produced moodboards for each room according to each one’s ‘character’. I think the most important experience that I used from my film days was my ability to source interesting items from the huge range of eclectic suppliers that I had built up over the years when sourcing props. My background also helped me to be brave with colour and also to mix different design styles.

**Can you tell us about the inspiration behind the hotel rooms pictured here?**

The first two room sets were influenced by a house story in *The Hamptons* that I had torn out of interiors magazine years before. I wanted to recreate that calm and give the bedroom a woody beach feel. I love Dinesen Douglas Fir which is so warm and soft and we’ve used it on the floor and walls and to make the joinery in the room. The other suite (*shown above*) came from childhood memories – from my time staying with my grandmother in Miami. She had a very similar white and green colour scheme in the bedroom and I always remembered it. It’s amazing the number of people who love the room – especially its bespoke round bed and the huge nickel bath.

**How did you go about designing these rooms and pulling the looks together?**

I’ve normally got a mood or theme for a room in mind and then I work together with Maria on colours and fabrics. After that it’s a mixture of luck and finding the right furniture and lighting that works. I have several containers of furniture in store and I’m always on the look out for new things.

**How important are details such as bathroom products to a scheme?**

Massively important. I love Ren products and our linen is Italian high thread count from Frette. In fact I had so many enquiries from clients about specific items in our hotel rooms that we’ve now opened an interiors shop in Rye called *The Shop Next Door*.

## GARDEN PARTY

**Above** The lush tropical printed curtain fabric is from Christopher Farr Cloth. The furniture on the adjoining private terrace is vintage and sourced from the Ardingly Antiques Fair in Sussex





# Signs of SPRING

*Welcome brighter days with nature-inspired wallpaper and colourful cushions. Keep the palette fresh with a white pendant light and choose painted rattan furniture for a rustic touch to your scheme*

COMPILED BY KIRSTEN JONES

**1** Agapanthus wallpaper, £71 per roll, Zoffany **2** Extra large pendant in pleated silk, £188, Tine K Home **3** Gotland wool blanket, £55, Urbanara **4** Kubu nature rattan chair, £149, Bloomingville **5** Aviary garden cotton cushion, £50, Laura Ashley **6** Kartio pitcher, £41, Iittala **7** Alpi henna cushion, £45, Heal's **8** Varese dining bench, £1,155, OKA **9** Moooi crochet side table by Marcel Wanders, £918, Occa-Home **10** Croft collection unpeeled rattan log basket, £100, John Lewis

FOR STOCKISTS, SEE PAGE 150







#### BEDROOM FABRICS

The Brunnsnäs collection features Diana **wallpaper**, £89 per roll; Ben **bedspread fabric**, £75 per linear metre; Ben **bench fabric**, £75 per linear metre; **Cushion fabric** in Raphaella silk, £83 per metre, all Sandberg





#### WRAPPING UP

Get that cosy feeling  
with a mohair throw.

This one is £166  
from Ferm Living

# Keeping snug

*Layer up and stay warm with our favourite wool and linen blankets*

COMPILED BY KIRSTEN JONES



1



2



3



4



5



6



7



8



9

- 1** Large Cubes blanket from the Soft Series, £285, Another Country **2** Lambswool throw in Moss, £95, Clare Loves  
**3** Classic Clarendon throw in Linen and Grey, £250, Tori Murphy **4** Pure wool throw, £75, Raft **5** Woollen Charcoal blanket, £55, Aspace **6** Seren plaid wool blanket, £159, Toast **7** Dawdler quilted linen throw in Aqua, £165, Loaf **8** Zig Zag alpaca wool throw in Camel, £295, Jonathan Adler **9** Hübsh plaid wool blanket with orange edge, £139, AtNo67

FOR STOCKISTS, SEE PAGE 150



# Stockists

Contact details for the products, shops and designers in this issue



**A** **ABODE** 01226 283434  
abodedesigns.co.uk  
**ADVENTURES IN FURNITURE**  
0845 164 9062  
chestofdrawers.co.uk  
**AEG** 0844 561 1611  
aeg-electrolux.co.uk  
**AGA** 0845 712 5207  
agaliving.com  
**AJP BATHROOMS** 020 3544 4002  
ajp-bathrooms.co.uk  
**ALESSI** 020 7518 9091  
alessi.com  
**ALTERNATIVE BATHROOM COMPANY**  
020 3375 9001  
alternativebathrooms.com  
**AMARA** 0800 587 7645  
amara.com  
**AMAZON** amazon.co.uk  
**ANNA JACOBS**  
annajacobsart.com  
**ANDREW MARTIN** 020 7225 5100  
andrewmartin.co.uk  
**ANN SACKS** annsacks.com  
**ANOTHER COUNTRY**  
020 7193 5692  
anothercountry.com  
**ANTHROPOLOGIE** 020 7529 9800  
anthropologie.com  
**APARICI** aparici.com/en/  
**AQUALISA** 01959 560000  
aqualisa.co.uk  
**ARDINGLY ANTIQUES FAIR**  
01636 702326  
iacf.co.uk/ardingly  
**ARLO & JACOB** arloandjacob.com  
**ARTEDONA** artedona.com  
**ARTISANS OF DEVICES**  
01380 720007  
artisansofdevices.com  
**ATLANTIC SHOPPING** 01212 301644  
atlanticshopping.co.uk

**ASPACE** 0845 872 2400  
aspace.co.uk  
**ATN067** 07518 575 580  
atnnumber67.co.uk  
**AXIOM BY FORMICA**  
axiomworktops.com  
**B** **BAUMATIC** 01189 336900  
baumatic.co.uk  
**BB DESIGN HOUSE** 0845 680 1033  
bbdesignhouse.com  
**BERT & MAY** 020 3673 4264  
bertandmay.com  
**BESTHOODS** 0800 073 1003  
besthoods.co.uk  
**BLAKES LONDON** 07834 512 155  
blakeslondon.com  
**BLANCO** 0844 912 0108  
blanco.co.uk  
**BLOOMINGVILLE** bloomingville.dk  
**BORA** 0845 338 1761  
euroline.org.uk  
**BRISSI** 0844 800 9912  
brissi.co.uk  
**BRITISH CERAMIC TILE**  
01626 834 774  
britishceramictile.com  
**BROSTE COPENHAGEN**  
0045 363 90 300  
brostecopenhagen.com  
**BUSHBOARD** 01933 232200  
bushboard.co.uk

**C** **CACTUS KITCHENS**  
020 7091 4800  
cactuskitchens.co.uk  
**CAPLE** 01179 381900  
caple.co.uk  
**CDA** 01949 862012 cda.eu  
**CEDAR BIFOLD COMPANY**  
020 8944 5523  
cedarbifoldcompany.com

**CHAMBER FURNITURE**  
01959 532553  
chamberfurniture.co.uk  
**CHAPLINS** 020 8421 1779  
chaplins.co.uk  
**CHARLES YORKE** 01623 756080  
charlesyorke.com  
**CHARLIE KINGHAM** 020 7935 2255  
charliekingham.co.uk  
**CHELSEA DESIGN CENTRE**  
020 7225 9166 dcch.co.uk  
**CHISELWOOD** 01522 704446  
chiselwood.co.uk  
**CHRISTOPHER FARR CLOTH**  
020 7349 0888  
christopherfarrcloth.com  
**CHRISTY** 0845 758 5252  
christy-towels.com  
**CLARE LOVES** 01494 874 101  
clareloves.co.uk  
**CORIAN BY DUPONT** 0800 962 116  
corian.co.uk  
**CROWN PAINTS**  
crownpaint.co.uk

**D** **DASH & ALBERT**  
dashandalbertannieselke.com  
**DESIGNERS GUILD** 020 7351 5775  
designersguild.com  
**DESIGNSPACELONDON**  
020 7487 5077  
designspacelondon.com  
**DEVI** devidanfoss.com  
**DEVOL** 01509 261000  
devolkitchens.co.uk  
**DINESEN** 0045 7455 2140  
dinesen.com  
**DINOSAUR DESIGNS**  
dinosaurdesigns.com  
**DIVERTIMENTI** 0870 129 5026  
divertimenti.co.uk  
**DOCA** 020 3603 8835  
docauk.com  
**DORNBRACHT** 02476 717129  
dornbracht.com  
**DOUGLAS WATSON STUDIO**  
01491 629960  
douglaswatsonstudio.co.uk  
**DRUMMONDS** 01483 237202  
drummonds-uk.com  
**DUALIT** 01293 652500  
dualit.com

**E** **ELECTROLUX** 0844 561 3613  
electrolux.co.uk  
**ELICA** 01252 351111  
elica.co.uk  
**ESPRESSO DESIGN**  
020 7078 9912  
espressodesign.co.uk  
**EUROPEAN HERITAGE**  
020 7381 6063  
europeanheritage.co.uk  
**EVOLINE** 01225 330242  
evoline.co.uk

**F** **FABER** 0845 548 3130  
faberhoods.co.uk  
**FARROW & BALL**  
01202 876141  
farrow-ball.com  
**FERM LIVING**  
0045 7022 7523  
ferm-living.com

**FIMA CARLO FRATTINI**  
fimacf.com/en  
**FIRE EARTH** 0845 366 0400  
fireearth.com  
**FISHER & PAYKEL** 0845 066 2200  
fisherpaykel.co.uk  
**FRANKE** 01614 366280  
franke.co.uk  
**FRENCH CONNECTION**  
0844 557 3285  
frenchconnection.com  
**FRETTE** 020 3411 1840  
eu.frette.com  
**FRONTLINE BATHROOMS**  
0845 470 2424  
frontlinebathrooms.co.uk

**G** **GAGGENAU** 0844 892 9026  
gaggenau.co.uk  
**GAIA CLIMATE SOLUTIONS**  
0845 434 9991 gaiacs.com  
**GISSI** 0039 01634 54111  
gessi.it  
**GORENJE** 020 8247 3980  
gorenje.co.uk  
**GRAHAM & GREEN** 0845 130 6622  
grahamandgreen.co.uk  
**GRANITE TRANSFORMATIONS**  
0808 115 4487  
granitetransformations.co.uk

**H** **HANS GROHE** 01372 465655  
hansgrohe.co.uk  
**HEAL'S** 0870 024 0780  
heals.co.uk  
**HENRY SWANZY** 07788752456  
henryswanzys.com  
**HI-MACS® BY LG HAUSYS**  
01892 704074 himacs.eu  
**HOLLAND OF RYE**  
01797 222 648  
hollowaysofludlow.com  
**HOLLY'S HOUSE** 020 7736 2222  
hollys-house.com  
**HOUSE OF FRASER** 0845 602 1073  
houseoffraser.co.uk  
**HUMPHREY MUNSON KITCHENS**  
01371 821300  
humphreymunson.co.uk

**I** **ITALIA** 00800 800 57800  
iitalia.com  
**INMOD** inmod.com

**INSINKERATOR** 01923 297880  
insinkerator.co.uk

**J** **JOHNNY GREY** 01730 821424  
johnnygrey.com  
**JOHN LEWIS** 0845 604 9049  
johnlewis.com  
**JONATHAN ADLER** 0800 014 8166  
jonathanadler.com

**K** **KARONIA** 0845 658 0333  
karonia.com  
**KITCHENAID** 0800 988 1266  
kitchenaid.co.uk  
**KOHLER** 0844 571 0048  
kohler.co.uk

**L** **LAUFEN** 01530 510007  
uk.laufen.com  
**LAURA ASHLEY** 0871 983 5999  
lauraashley.com  
**LEDS-C4** 0034 973 468 100  
leds-c4.com  
**LEICHT** 01892 519383  
leicht.de  
**LOAF** 0845 459 9937  
loaf.com  
**LOUIS POULSEN**  
louispoulsen.com  
**LSA** 01932 789721  
lsa-international.co.uk  
**LUMA** 020 8748 2264  
lumadirect.com

**M** **MALENE BIRGER**  
0045 7022 7071  
birger1962.com  
**MANDARIN STONE** 01600 715444  
mandarinstone.com  
**MARKS & SPENCER** 0845 302 1234  
marksandspencer.com  
**MASCOT BESPOKE HOMES**  
0203 475 4801  
mascotbespoke.com  
**MATKI** 01454 322888  
matki.co.uk  
**MATRIX KITCHENS** 020 7808 0340  
matrixkitchens.co.uk



# Contacts

*The fastest way to find your dream kitchen, bathroom and bedroom!*



FOR FURTHER INFORMATION ON  
EKBB ADVERTISERS SIMPLY CLICK ON...

[www.ekbbmagazine.co.uk/responses](http://www.ekbbmagazine.co.uk/responses)

MDM FURNITURE 0161 669 6290  
mdmfurniture.com  
MIELE 0845 365 6603  
miele.co.uk  
MODULNOVA modulnova.it  
MOWLEM & CO 020 7610 6626  
mowlemadco.co.uk

**N** NEFF 0844 892 9033  
neff.co.uk  
NEPTUNE 01793 427427  
neptune.com  
NICKY CORNELL 0845 604 0244  
nickycornell.com  
NKUKU 01803 866847  
nkuku.com  
NORDIC ELEMENTS 020 7498 5757  
nordicelements.com  
NU-HEAT 01404 549 770  
nu-heat.co.uk

**O** OCCA-HOME 0844 879 4258  
occa-home.co.uk  
OKA 0844 815 7380  
okadirect.com  
ORIGINAL BTC 020 8969 3561  
originalbtc.com  
ORIGINAL STYLE 01392 473000  
originalstyle.com  
OSBORNE & LITTLE 020 8812 3030  
osborneandlittle.com

**P** PANDO pando.es/en  
PERRIN & ROWE 01708 526361  
perrinandrowe.co.uk  
PIAZZA TILES 0845 257 0227  
piazzatiles.com  
PLAIN ENGLISH DESIGN  
01449 774028  
plainenglishdesign.co.uk  
PLANTATION RUG COMPANY  
plantationrug.co.uk  
PORCELAIN WOOD 0844 854 3050  
porcelainwood.com  
PORCELANOSA 0800 915 4000  
porcelanosa.com  
PURE BATHROOM COLLECTION  
0845 634 4321  
purebathroomcollection.co.uk

**Q** QUIRK quiirk.co.uk  
QUOOKER 020 7923 3355  
quooker.co.uk

**R** RAFT FURNITURE 020 8450 5078  
raftfurniture.co.uk  
RALPH LAUREN HOME  
020 7535 4600  
ralphlaurenhome.com  
RENCRAFT 01732 762682  
rencraft.co.uk  
REN SKINCARE 020 7724 2900  
renskincare.com  
RESILICA 01273 511 564  
resilica.com  
RETRUVIUS 020 8960 6060  
retruvius.com  
RIPPLES 0800 107 0700  
ripples.ltd.uk  
ROCA 01530 830080  
uk.roca.com  
ROCKETT ST. GEORGE 01444 253375  
rockettstgeorge.co.uk  
ROUNDHOUSE DESIGN  
020 7736 7362  
roundhousedesign.com  
RUME 01273 777810  
rume.co.uk

**S** SANDBERG sandbergab.se  
SECOND NATURE 01325 505539  
snccollection.co.uk  
SIEMATIC 01612 466010  
siematic.co.uk  
SIEMENS 0844 892 9044  
siemens-home.co.uk

SILESTONE 01256 761229  
silestone.co.uk  
SKAGERAK skagerak.dk  
SKANDI HOME skandihome.com  
SKANDIUM 020 7584 2066  
skandium.com  
SMALLBONE OF DEVIZES  
020 7589 5998 smallbone.co.uk  
SMEG 0844 557 9907  
smeguk.com  
SOFA WORKSHOP 0844 249 9161  
sofaworkshop.com  
SWEETPEA & WILLOW  
0845 257 2627  
sweetpeaandwillow.com

**T** TEDDY EDWARDS 01865 404960  
teddy-edwards.co.uk  
TEUCO 01279 771159 teuco.com  
THE ALBION BATH COMPANY  
01206 794462  
albionbathco.com  
THE CONRAN SHOP 0844 848 4000  
conranshop.co.uk  
THE GEORGE IN RYE HOTEL  
01797 222 114  
thegeorgeinrye.com  
THE OAK MEN theoakmen.com  
THE RUG COMPANY 020 7384 0980  
therugcompany.com  
THE SHOP NEXT DOOR  
01797 228 626  
thegeorgeinrye.com/tsnd  
THE SOFA & CHAIR COMPANY  
0208 752 8935  
thesofaandchair.co.uk  
THE WHITE COMPANY  
0844 736 4222  
thewhitecompany.com  
TINE K HOME tinekhome.com  
TOAST 0844 557 5200 toa.st  
TOM HOWLEY 01618 481200  
tomhowley.co.uk  
TONS OF TILES 01752 785623  
tonsoftiles.co.uk  
TORI MURPHY 07958 688519  
torimurphy.com  
TRITON SHOWERS  
tritonshowers.co.uk

**U** UPTON WOOD FLOORING  
01491 628 765 uptonwood.com  
URBANARA 0800 779 7527  
urbanara.co.uk

**V** VILLEROY & BOCH 020 8871 4028  
villeroy-boch.com  
VI-SPRING 01752 366311  
vispring.co.uk  
VITRA 01235 750990  
vitra.co.uk

**W** WARMUP 0845 345 2288  
warmup.co.uk  
WATERWORKS 07974 430433  
waterworks.com  
WEST ELM 0800 404 9780  
westelm.co.uk  
WESTIN DESIGN 01484 421585  
westin.co.uk  
WHIRLPOOL 0844 815 8989  
whirlpool.co.uk  
WILLIAM HOLLAND 01305 849490  
williamholland.com  
WOLF 0845 250 0010  
subzero-wolf.co.uk  
WOVENGROUND 020 7033 3741  
wovenground.com

**Z** ZOFFANY 0844 543 4600  
zoffany.com  
ZUCCHETTI 0039 0322 954700  
zucchettikos.com/en

1909 KITCHENS 01325 505539  
1909kitchens.co.uk

• ALNO	Outside Back Cover
• CAESARSTONE	68
• CHAMBER FURNITURE	72
• CHARLES YORKE	4 & 5
• CHARNWOOD	74
• CLIVE CHRISTIAN	Inside Front Cover & 3
• DAVONPORT	91
• DEKTON BY COSENTINO	8
• ELICA	23
• ELLIS	136
• ESPRESSO DESIGN	10
• FABER, KITCHEN EX	98
• HARVEY JONES	18
• JOHN LEWIS	14
• MARK WILKINSON	35
• MASTERCLASS KITCHENS	6 & 7
• MATKI	116 & 117
• NEPTUNE	45
• QUOOKER	Inside Back Cover
• REED HARRIS	136
• ROPER RHODES, LAURA ASHLEY	131
• SCHMIDT KITCHENS	70
• SIMON TAYLOR	20
• SMALLBONE OF DEVIZES	13
• SOLA KITCHENS	16
• STEWKLEY STONE	136
• STONE & CERAMIC WAREHOUSE	136
• THE ENGLISH WARDROBE COMPANY	138
• TOM HOWLEY	54 & 55
• VI-SPRING	141
• WEST ONE BATHROOMS	118
• WESTIN	97

## CLASSIFIED

- AMERICAN SHUTTERS
- B.C. DESIGNS
- CROYDEX
- DAVONPORT
- DEVOL KITCHENS
- FUNKTIONAL KITCHENS
- GREAT BRITISH KITCHENS
- & INTERIORS LTD
- HERITAGE BATHROOMS
- HICKS & HICKS
- JOHN LADBURY AND COMPANY
- PHILIP WATTS DESIGN
- QUERCUS BEDS
- RUGBY FITTED KITCHENS
- THE ALBION BATH COMPANY
- THE HUNTER FAN COMPANY
- THE SUSSEX RANGE
- VUPLEX UK LIMITED
- WARREN EVANS





KERAMAG  
DESIGN

# Win

AROUND £3,000 WORTH  
OF BATHROOM PRODUCTS  
FROM KERAMAG DESIGN

Are you looking to revamp your bathroom and add a sense of contemporary luxury with some stunning new products? Then look no further because **ekbb** has teamed up with bathroom brand Keramag Design to give one lucky reader the chance to win both a washbasin and furniture worth almost £3,000!

Keramag Design has launched Xeno<sup>2</sup>, a collection of sanitaryware and furniture designed by Robin Platt and inspired by the 'soft geometry' trend in bathroom ceramics. It offers a selection of washbasins, handrinse basins, Rimfree® WCs, bidet, mirrors and furniture with ultra smooth surfaces, push-to-open operation and integrated LED lighting. We will be giving away the asymmetrical washbasin from the collection, which is a unique, contemporary-style piece, with the side position of the basin inspired by the idea of it being hewn out of a slab of stone. Not only that, one reader will also be winning modular furniture, which is available in three different finishes: high gloss white, matt grey and Scultura grey textured woodgrain (*shown*). Don't miss out on the opportunity to create your dream bathroom scheme. Go online and enter this competition now!

For more information or to request a brochure, call 01270 871756 or visit [keramagdesign.com](http://keramagdesign.com).

For your chance to win, answer the following question:

**WHO DESIGNED THE KERAMAG  
DESIGN XENO<sup>2</sup> COLLECTION?**

**A** Robert Platt **B** Robin Platt **C** Robin Parr

TO ENTER VISIT [ekbbmagazine.co.uk](http://ekbbmagazine.co.uk)  
and click on the 'Competitions' option.

**RULES OF ENTRY:** 1) Competition closes at midnight on 28th February 2015. Winners will be notified after the closing date. 2) One winner will receive a washbasin and modular furniture from the Xeno<sup>2</sup> range worth a total of £2,992. Mainland UK delivery is included. Installation is not included. Subject to availability, non transferable or refundable. 3) No cash alternative will be given. 4) Open to residents in the UK (mainland), over age of 18, except employees of Hubert Burda Media UK and Keramag Design. 5) Only one entry per person. 6) Winners must be willing to participate in publicity if required. 7) The editor's decision is final. Correspondence will not be entered into. 8) Winners are selected at random, from correct entries received, after the competition end date. 9) Hubert Burda Media UK or Keramag Design may use your details to advise of products and services. Details are occasionally available to vetted companies. 10) Allow 8-10 weeks from selection to completion. 11) Reproduction of this competition, in whole or part, without written permission is prohibited. Hubert Burda Media UK reserves the right to prosecute offending parties.

## KITCHENS



**funktional**kitchens 

**Crouch End**  
128 Crouch Hill  
London N8 9DY  
Telephone 020 8341 2020

**Islington**  
42 Cross Street  
London N1 2BA  
Telephone 020 7359 4041

[www.funktionalkitchens.co.uk](http://www.funktionalkitchens.co.uk)



**John Ladbury and Company**  
Unit 11 Alpha Business Park, Travellers Close,  
Welham Green, Hertfordshire AL9 7NT

Telephone: 01707 262966  
[www.johnladbury.co.uk](http://www.johnladbury.co.uk)





## IRONMONGERY

mercury bar stool  
by philip watts  
[www.philipwattsdesign.com](http://www.philipwattsdesign.com)



## KITCHENS



deVOL Kitchens

[www.devolkitchens.co.uk](http://www.devolkitchens.co.uk) - 01509 261000

London & South East

Bespoke Kitchens



[www.handmadekitchens.co.uk](http://www.handmadekitchens.co.uk)

Tel: 01959 532233

Visit our beautiful extensive showroom  
& free car park



Badgers Mount, Sevenoaks TN14 7AD

**nobilia**  
By **RFK KITCHENS**

**NEFF**  
MasterPartner®  
Excellence Awards Winners

**kbb REVIEW AWARDS 2013 WINNER**  
KITCHEN CUSTOMER SERVICE OF THE YEAR

\* Nobilia on display at the Warwick Showroom

**RFK The Independent Award Winning Kitchen Company**

RFK Warwick, 47 Coten End,  
Warwick, CV34 4NT  
Tel: 01926 419165

RFK Rugby, Cottage Leap,  
Rugby, CV21 3XP  
Tel: 01788 547647

[www.rfkkitchens.co.uk](http://www.rfkkitchens.co.uk)

**HICKS & HICKS**  
The online interiors store for homes of distinction

10% OFF ALL  
FIRST ORDERS

CALL FOR A  
BROCHURE  
01872 530761

[www.hicksandhicks.com](http://www.hicksandhicks.com)

For further information on EKBB advertisers, and to request a brochure, simply click on [www.ekbb.co.uk/responses](http://www.ekbb.co.uk/responses)



## BATHROOMS



Whether you want to tap into the latest colour trends or create a bespoke print, our cast iron baths are hand finished, primed and ready for you to paint whatever colour you like.

To see all of our stunning products and create your perfect bathroom visit [www.heritagebathrooms.com/hb14](http://www.heritagebathrooms.com/hb14)

**HERITAGE**  
BATHROOMS



What makes an Albion Bath unique?

Our exclusive bath material creates a difference you can feel....

Request your brochure on 01255 831605  
or go to: [www.albionbathco.com](http://www.albionbathco.com)

**ALBION**

Handmade bathrooms directly from our factory

To advertise in EKBB contact  
Victoria Jennings on 01206 851117



## BEDROOMS



Request your brochure  
& free sample.



[quercusbeds.co.uk](http://quercusbeds.co.uk) | 01777 869 669

For further information on EKBB  
advertisers, and to request a brochure,  
simply click on [www.ekbb.co.uk/responses](http://www.ekbb.co.uk/responses)

up to  
**50% OFF** sale  
HUGE JANUARY



'Sunday' double bed ~~£475~~ **£375**

Warren Evans 13 stores | online | 020 7693 8988

Don't forget to mention EKBB  
when replying to adverts

## HEATED TOWEL RAILS

The  
**sussex**  
Range

The original and finest 100% stainless steel towel rails & radiators  
Please call for a brochure and your nearest dealer



Tel. 01444 831200 Fax. 01444 831900 [info@jiseurope.co.uk](mailto:info@jiseurope.co.uk)  
[www.sussexrange.co.uk](http://www.sussexrange.co.uk)



## CLEANING PRODUCTS

**MAINTAIN HIGH GLOSS HEAVEN**



**VuPlex**  
Clearly Better  
PLASTIC PROTECTION  
Plastic Cleaner & Anti-Static Polish  
225 ml (8 fl. oz.)

- ✓ Gives deep protected shine
- ✓ Improves scratch resistance
- ✓ Controls static
- ✓ A devil against dirt and grease
- ✓ Simple and easy to use
- ✓ Many applications around the home
- ✓ Safe on food surfaces
- ✓ Contains natural ingredients

[www.vuplex.co](http://www.vuplex.co)

Available from: VuPlex UK Limited  
Enquiries at [vuplex.co](mailto:vuplex.co)

## WASTE DISPOSAL

**WASTE FORCE**  
The Power To Grind

Now On Offer £145

"My Waste Force disposer is essential to keeping my kitchen clean. Every home should have one!"

**Waste-Force Disposal Units**

- ✓ Gets rid of waste food fast
- ✓ Saves space, time and money
- ✓ Great performance, great value

Call now to order: 01256 636 509 [www.waste-force.com](http://www.waste-force.com)

## SHUTTERS

**AMERICAN SHUTTERS**



20 years of experience  
02392 597967  
[sales@americanshutters.co.uk](mailto:sales@americanshutters.co.uk)

## BATHROOMS

**Flexi-Fix**  
Screw or glue  
Making it easier for you!

**Cross over to Flexi-Fix**  
**simply screw or glue**

**Re Fix**  
aligns to old holes

**Screw Fix**  
to new holes

**Glue Fix**  
to most surfaces



**croydex**  
Think bathrooms

16 Fully co-ordinated ranges of bathroom accessories

+44 (0)1264 365881 | [info@croydex.co.uk](mailto:info@croydex.co.uk) | [www.croydex.com](http://www.croydex.com)



BATHROOMS



BC Designs Flag Bath



bcdesigns

classic & contemporary baths

The Design Works, Allens Farm, Tye Road, Elmstead Market, Essex CO7 7BN

**Tel: 01206 827100**

Fax: 01206 827800

Email: [sales@bcdesigns.co.uk](mailto:sales@bcdesigns.co.uk)

[www.bcdesigns.co.uk](http://www.bcdesigns.co.uk)

[www.bathroomlighting.co.uk](http://www.bathroomlighting.co.uk)



# The Essential Directory

Sponsored by



## MATRIX KITCHENS KNIGHTSBRIDGE

10 Thurloe Place  
Knightsbridge  
London,  
SW7 2RZ

Tel: 020 7808 0340  
design@matrixkitchens.co.uk  
www.matrixkitchens.co.uk

## ESSENTIAL APPLIANCES

### BLANCO GERMANY

Sinks, Taps, Cooker  
Hoods & Accessories

1 Victor Way  
Colney Street  
St. Albans  
AL2 2FL

Tel: 0844 912 0100  
www.blanco.co.uk



### caple

www.caple.co.uk

0117 938 1900  
sales@caple.co.uk



Amica

ZEN

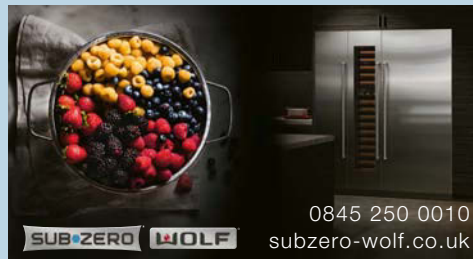
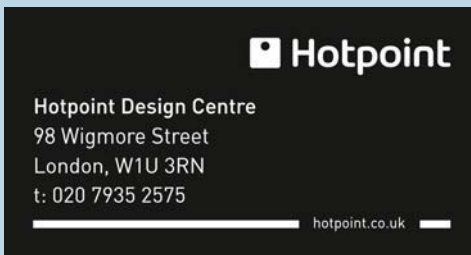
No timers, no alarms  
just cooking genius  
- quietly.

www.amica-international.co.uk

### Hotpoint

Hotpoint Design Centre  
98 Wigmore Street  
London, W1U 3RN  
t: 020 7935 2575

hotpoint.co.uk



SUBZERO WOLF

0845 250 0010  
subzero-wolf.co.uk

## ESSENTIAL SINKS & TAPS

### THE UNDERMOUNT SINK SPECIALISTS

See our full range at  
www.the1810company.co.uk

Unit 7, Bromfield Commercial Park,  
Mold, Flintshire CH7 1HE  
t. +44 (0) 1978 660 770 f. +44 (0) 1978 660 771  
e. sales@the1810company.co.uk



### V-ZUG

Premium Quality Kitchen  
Appliances from Switzerland

www.vzug.co.uk

0843 289 5759 • info.uk@vzug.com



Wine Storage  
Corner Fridges  
Drawer Fridges  
Cold Rooms

norcool



Tel: 0161 436 6280  
www.franke.co.uk

FRANKE

### LIEBHERR

Refrigeration Experts

COOELECTRIC LTD National Salesline 08444 122 655  
National Free Fax 0800 197 6591  
Email sales@cooelectric.co.uk  
Website www.myliebherr.co.uk



See more of  
our stunning  
kitchens at  
tec-kitchens.com

01621 850115  
info@tec-kitchens.com

tec-kitchens

Kitchens & Bathrooms to inspire you

Call 0161 436 6280 or visit www.carron.com



Inspiration for your kitchen



CARRON  
PHOENIX

### GAGGENAU

Gaggenau Showroom  
40 Wigmore Street,  
London W1U 2RX

Consumer enquiries: 0844 892 8988  
Dealer enquiries: 0844 892 8929  
Website: www.gaggenau.co.uk



THE NEW SINK & TAP COLLECTION FROM  
BRITAIN'S NO. 1 SINK MANUFACTURER.

RANGEMASTER  
sinks & taps

www.rangemastersinks.co.uk

Tel: 0870 789 6110



KWC

www.kwctaps.co.uk



# TO PROMOTE YOUR COMPANY IN THIS SECTION CALL VICTORIA JENNINGS ON 01206 851117 ext 222

## ESSENTIAL BEDROOMS



**Loddenkemper** Email: [sales@euromobel.co.uk](mailto:sales@euromobel.co.uk)  
T: 0845 658 1949 [www.loddenkemper.de](http://www.loddenkemper.de)

## ESSENTIAL KITCHENS



**HOLME TREE** 01530 564561  
[www.holmetree.co.uk](http://www.holmetree.co.uk)

## ESSENTIAL KITCHENS



**MATRIX KITCHENS**  
KNIGHTSBRIDGE

## ESSENTIAL WORKTOPS



**DECO GLAZE**  
Suppliers of the ultimate 10mm worktop  
[www.decoglaze.co.uk](http://www.decoglaze.co.uk)



[www.unitsonline.co.uk](http://www.unitsonline.co.uk)  
**units online**

**FULL PROJECT MANAGEMENT & DESIGN SERVICE FOR**  
PROPERTY DEVELOPERS | SELF BUILD PROJECTS |  
ARCHITECTS | COMMERCIAL ENTERPRISES | HOMEOWNERS

**Lisa Melvin DESIGN**  
01788 866996 | [WWW.LISAMELVINDESIGN.CO.UK](http://WWW.LISAMELVINDESIGN.CO.UK)  
f t e p YouTube



**BUSHBOARD**  
Sensational surfaces for kitchens  
To find out more go to [www.bushboard.co.uk](http://www.bushboard.co.uk),  
email [help@bushboard.co.uk](mailto:help@bushboard.co.uk) or call us on 01933 232 272



Sophisticated simplicity **poggen pohl**  
+SEGMENTO Poggenpohl UK, 100 London Road, St Albans, Herts: AL1 1RX [poggenpohl.com](http://poggenpohl.com)  
Tel: +44(0) 1727 730100



**Natural Bed Company**  
[www.naturalbedcompany.co.uk](http://www.naturalbedcompany.co.uk)  
Call us on: 0114 272 1984

pietra solid surface worktops  
It's all in the detail  
**DERALAM**  
Deralam Laminates Ltd, West Coast Park, Bradley Lane, Standish, Wigan, WN6 0YR  
National Sales Line: 01257 478540  
Fax: 01257 478550  
Email: [sales@deralam.co.uk](mailto:sales@deralam.co.uk) [www.deralam.co.uk](http://www.deralam.co.uk)



**BA part of it**  
The choice you make, made better  
Cooktown +44 (0) 28 8676 4600  
Doncaster +44 (0) 1302 890555  
[mail@bacomponents.co.uk](mailto:mail@bacomponents.co.uk)  
**www.byba.co.uk**

The search for the perfect range cooker is over  
**britannia**  
Your life. Our passion  
Contact us today on **0843 507 3431**  
[www.britanniainliving.co.uk](http://www.britanniainliving.co.uk)

**TOP QUALITY STAINLESS STEEL**  
Worktops Splashbacks Panels Doors  
Tel 01442 82 6999  
[www.gecanderson.co.uk](http://www.gecanderson.co.uk) **GEC ANDERSON**  
the stainless steel specialists

**RFK KITCHENS**  
KITCHENS  
APPLIANCES  
WORKSURFACES  
INNOVATIONS  
Call: 01788 547647  
Unit 7, Cottage Leap, Rugby CV21 3XP  
5 mins off junction 1 M6 & junction 19 of the M1  
[www.rfkkitchens.co.uk](http://www.rfkkitchens.co.uk)

**Terence Ball Kitchens**  
A name you can trust  
• High Quality Cabinets (All Egger Finishes)  
• Bespoke Manufacturing  
• Over 250 Door Ranges  
• Unbeatable Industry Advice & Service  
• Deliveries Throughout the UK  
[www.terenceballkitchens.co.uk](http://www.terenceballkitchens.co.uk)  
[sales@terenceballkitchens.co.uk](mailto:sales@terenceballkitchens.co.uk)  
01984 624640

## ESSENTIAL SPLASHBACKS

**UK SPLASHBACKS**  
Tailor made & fully fitted  
toughened glass  
splashbacks in any size,  
shape & colour  
Tel: 0800 232 1149  
[www.uksplashbacks.com](http://www.uksplashbacks.com)

Beautiful British Furniture,  
Designed with Care,  
Fitted by Craftsmen.  
Covering  
Buckinghamshire  
0844 579 6075  
**Domus**  
Kitchens and bedrooms  
[www.domuskitchensandbedrooms.co.uk](http://www.domuskitchensandbedrooms.co.uk)

**SCHMIDT KITCHENS**  
Schmidt Kitchens UK  
01622 812123  
[www.schmidt-kitchens.com](http://www.schmidt-kitchens.com)



# KBSA Retailer Directory

*Here is just a selection of KBSA retailers  
who can help turn your dream kitchen into a reality*

To advertise in the KBSA Retailer Directory call Victoria Jennings on 01206 851117

## Aberdeenshire

**LAINGS**  
BATHROOMS  
BEDROOMS  
KITCHENS  
Complete Design & Installation  
Est 1862  
Celebrating 150 years of excellence  
[www.laings.com](http://www.laings.com)  
Inverurie Aberdeenshire AB51 0ZJ  
T: 01467 620311

## Bedfordshire

**AngliaInteriors Ltd**  
Affordable kitchens bedrooms and home office since 1974  
Anglia House, Wolseley Business Park,  
7 Raiton Road, Woburn Road Ind Est, Kempston,  
Bedford MK42 7PN Telephone: 01234 843000  
**NEVER UNDERSOLD POLICY**  
we will not be beaten on price for a true  
'like for like' package

## Cheshire

**KITCHENS & BATHROOMS**  
Adamson  
FREEPHONE for FREE advice  
**0800 66 00 00**  
Adamson House, Outram Road  
Dukinfield, Cheshire SK16 4XE  
[www.adamsons.co.uk](http://www.adamsons.co.uk)

## Derbyshire

**creative interiors**  
kitchens bathrooms bedrooms  
**Derby**  
39 Duffield Road, Derby DE1 3BH  
Tel: 01332 384 444  
showroom open 7 days a week  
Est. 1969  
[www.creativeinteriors.co.uk](http://www.creativeinteriors.co.uk)

## Edinburgh

**kitchens INTERNATIONAL**  
Edinburgh Showrooms  
117 Dundas Street, Stockbridge, EH3 5EB.  
0131 523 0477  
24 Westfield Road, Murrayfield, EH11 2QB.  
0131 337 3434  
[www.kitchensinternational.co.uk](http://www.kitchensinternational.co.uk)

**denmore**  
kitchenandbathroomstudio  
14 silverburn place  
bridge of don  
aberdeen ab23 8eg  
tel: 01224 826776  
fax: 01224 707437  
email: info@denmorekitchens.co.uk

## Berkshire

**elements**  
KITCHENS + INTERIORS  
8b Portman Rd Reading RG30 1EA  
T 0118 959 9919  
[www.elementskitchens.co.uk](http://www.elementskitchens.co.uk)

**JD Kitchens**  
4 Gorsey Lane, Warrington,  
Cheshire WA1 3PU  
TEL: 01925 636997  
FAX: 01925 658694  
e-mail: sales@jdkitchens.co.uk  
[www.jdkitchens.co.uk](http://www.jdkitchens.co.uk)

**KEDLESTON INTERIORS**  
Specialists in Kitchens, Bathrooms and Bedrooms  
61 KEDLESTON ROAD, DERBY DE22 1FL  
Telephone: 01332 295031  
Facsimile: 0845 2803328  
Email: [kedleston@btconnect.com](mailto:kedleston@btconnect.com)  
[www.kedlestoninteriors.com](http://www.kedlestoninteriors.com)

## Essex

**Nicholas Anthony**  
43-45 London Road, Lexden,  
Colchester, Essex CO3 9AJ  
Tel: 01206 363 200  
[www.nicholas-anthony.co.uk](http://www.nicholas-anthony.co.uk)

**kitchens INTERNATIONAL**  
Aberdeen Showroom  
Denmore Road  
Bridge of Don, AB23 8JW.  
01224 824 300  
[www.kitchensinternational.co.uk](http://www.kitchensinternational.co.uk)

## County Armagh

**David Johnston DESIGN**  
Furniture of exceptional  
quality which will meet  
both your expectations  
and requirements  
100 MAIN STREET MOIRA  
Tel: 028 9261 9999  
[www.davidjohnstondesign.com](http://www.davidjohnstondesign.com)  
[info@davidjohnstondesign.co.uk](mailto:info@davidjohnstondesign.co.uk)

## Devon

**BRADBURY'S**  
the ALNO store  
Denbury Court, Matford Park,  
Exeter EX2 8NB  
01392 825940  
[www.bradburysltd.co.uk](http://www.bradburysltd.co.uk)

## Ascot

**Nicholas Anthony**  
65 High Street, Ascot  
Berkshire SL5 7HP  
Tel: 01344 624 829  
[www.nicholas-anthony.co.uk](http://www.nicholas-anthony.co.uk)

## Buckinghamshire

**DESIGN matters**  
QUALITY KITCHENS <- EXPERT DESIGN  
Aries House, Straight Bit, Flackwell Heath, HP10 9NB.  
Tel: 01628 531584 | [www.dmkbb.co.uk](http://www.dmkbb.co.uk)

## Cumbria

**MIKE HUGHES** KITCHENS & BEDROOMS  
FITTED INTERIORS  
8 Meetings Ind Est, Park Rd,  
Barrow-in-Furness, Cumbria LA14 4TL  
Tel: 01229 871122  
e-mail: sales@mikehughes.co.uk  
[www.mikehughes.co.uk](http://www.mikehughes.co.uk)

**ASHGROVE**  
KITCHENS LIMITED  
Beautiful kitchens, beautifully made in Devon.  
freephone 0800 0683291  
[www.ashgrovekitchens.co.uk](http://www.ashgrovekitchens.co.uk)

## Ayrshire

U.K. Kitchen Retailer of the Year 2013  
by  
**J.S. Geddes**  
• 10/12 West Netherton Street,  
Kilmarnock KA1 4BU  
Tel: 01563 530838  
• Hayes Gardenland, Tarbolton Road,  
Symington KA1 5PD  
Tel: 01563 831340  
[www.jsgeddes.com](http://www.jsgeddes.com)

## Cambridgeshire

**AngliaInteriors Ltd**  
Affordable kitchens bedrooms and home office since 1974  
Anglia House, 13 Stonehill,  
Huntingdon, Cambridgeshire PE29 6ED  
Telephone: 01480 398018  
**NEVER UNDERSOLD POLICY**  
we will not be beaten on price for a true  
'like for like' package

**B&R BARNES**  
Kitchens and Bedrooms Ltd  
Established 1945  
Specialists in English & Continental  
Kitchens & Bedrooms  
313 London Road, Westcliff-on-Sea, Essex SS0 7BX  
Tel: 01702 345302 Fax: 01702 338410  
Email: [info@kitchens-1st.com](mailto:info@kitchens-1st.com)  
[www.kitchens-1st.com](http://www.kitchens-1st.com)

**Nicholas Anthony**  
120 East Road, Cambridge  
CB1 1DB  
Tel: 01223 368 828  
[www.nicholas-anthony.co.uk](http://www.nicholas-anthony.co.uk)

To advertise in  
the KBSA Retailer  
Directory call  
Victoria Jennings  
01206 851117

## Dorset

**HALE & MURRAY**  
Custom Made Kitchens,  
Bedrooms, Bathrooms and  
Home Office Furniture  
3 Abingdon Rd, Nuffield Ind Est,  
Poole, Dorset BH17 0UG  
**01202 678431**  
[haleandmurray.co.uk](http://haleandmurray.co.uk)  
[admin@haleandmurray.co.uk](mailto:admin@haleandmurray.co.uk)

**PAUL NEWMAN**  
136 High Street, Hadleigh,  
Essex SS7 2PB  
Tel: Southend (01702) 552868  
[www.paulnewmaninteriors.co.uk](http://www.paulnewmaninteriors.co.uk)  
Established 1984

**CKi Kitchens**  
The Insurance Centre, Clacton Road,  
Elmstead Market, Colchester,  
Essex CO7 7AA  
[www.ckikitchens.co.uk](http://www.ckikitchens.co.uk)  
Tel: 01206 366330

## East Sussex

**HKS**  
Kitchens ♦ Bedrooms ♦ Bathrooms ♦ Studies  
Eastbourne 01232 639446  
Heathfield 01435 865599  
St. Leonards 01424 443464  
Haywards Heath 01444 452222  
www.hks-uk.com

## Glasgow

**kitchens INTERNATIONAL**  
Glasgow Showroom  
220 Great Western Road, G4 9EJ  
0141 404 7744  
www.kitchensinternational.co.uk

## Hampshire

Basingstoke's Premier  
Kitchen & Bathroom Showroom  
**TWO GUYS KITCHENS** No.1 for service  
Showroom: Armstrong Road, Daneshill  
East, Basingstoke, Hampshire, RG24 8NU  
t. 01256 363123  
www.twoguys.co.uk

**the myers touch**  
INTERIORS + ARCHITECTURE + KITCHENS  
"Creating bespoke living spaces  
at the heart of the home"  
themyerstouch.com 01962 600 179

## Hertfordshire

**notte** **mark david** **bristol** **BEECK**  
41 London Road, Sawbridgeworth,  
Hertfordshire CM21 9EH  
Tel: 01279 868800  
email@markdavid.co.uk  
www.markdavid.co.uk  
From affordable to luxury kitchens...  
Mark David is the complete package

**75 YEARS OF LUXURY KITCHENS  
BEDROOMS AND BATHROOMS**  
**Dobsons**  
beautiful homes- inside and out  
SHOWROOM: HERTS EN9 9BN  
01992 62 30 66  
www.dobsonshome.com

## Kent

**RUACH DESIGNS**  
UNIT 3,  
WESTERHAM  
TRADE CENTRE  
THE FLYERS WAY  
WESTERHAM  
KENT  
TN16 1DE  
FREEPHONE: 0800 0185797  
www.ruachdesigns.co.uk

## Kent

**ream**  
Design you love.  
Quality you expect.  
Service you deserve.  
www.ream.co.uk  
10 & 11 Matilda Close, Gillingham Business Park,  
Gillingham, Kent ME8 0PY  
Tel: 01634 799913

## Lancashire

**KITCHENS & BATHROOMS**  
Adamson  
FREEPHONE for FREE advice  
**0800 66 00 00**  
Adamson House, Outram Road  
Dukinfield, Cheshire SK16 4XE  
www.adamsons.co.uk

**absolute kitchens**  
1 Ward Street  
Lostock Hall  
Preston PR5 5HR  
Tel: 01772696900

**ALNO by diane berry kitchens**  
Multi award winning company  
132 Bury New Road  
Prestwich,  
Manchester M25 0AA  
Tel: 0161 798 5335  
www.dianeberrykitchens.co.uk

**ARAN** **niche**  
CUCINE KITCHENS  
www.nichekitchens.co.uk  
Freephone: 0808 155 5753  
Burnley Road, Rawtenstall  
Rossendale, Lancashire BB4 8HH, UK

## Leicestershire

Specialists in  
Fitted Kitchens  
since 1957  
98 Granby Street,  
Leicester LE1 1DJ  
Tel: (0116) 2555745  
www.dewhirstkitchens.co.uk  
DEWHIRST  
Kitchens  
ESTABLISHED 1957

## London

**DESIGNER INTERIORS**  
OF LONDON EST. 1989  
85 Wandsworth Bridge Road, SW6 2TD  
Tel: 020 7731 8800  
172 Blackstock Road, N5 1HA  
Tel: 020 7226 3210  
designer-interiors.co.uk

## London

**Nicholas Anthony.**  
44-48 Wigmore Street,  
London W1U 2RY  
Tel: 0207 935 0177  
www.nicholas-anthony.co.uk

**Nicholas Anthony.**  
172 Brompton Road, London  
SW3 1HW  
Tel: 0207 838 0588  
www.nicholas-anthony.co.uk

**halcyon**  
INTERIORS  
the ALNO store  
120 Wigmore Street, London, W1U 3LS  
509 Uxbridge Road, Hatch End, HA5 4JS  
77-79 Wycombe End, Beaconsfield, HP9 1LX  
Tel: 020 7486 3080  
www.halcyon-interiors.co.uk

**ROOMS**  
KITCHEN SPECIALISTS  
49 Mottingham Road  
London SE9 4QZ  
Tel: 020-8857 5699  
Fax: 020-8857 7425  
www.roomskitchens.co.uk

**ream**  
Design you love.  
Quality you expect.  
Service you deserve.  
www.ream.co.uk  
758 Sidcup Road, Fiveways, New Eltham,  
London SE9 3NS  
Tel: 020 8166 8177

To advertise in  
the KBSA Retailer  
Directory call  
Victoria Jennings  
01206 851117

## Perthshire

**CALLUM WALKER**  
INTERIORS  
Ruthvenfield Road, Inveralmond, Perth  
www.callumwalker.com

## Perthshire

**kitchens INTERNATIONAL**  
Perth Showroom  
16-18 Princes Street, PH2 8NG.  
01738 639 090  
www.kitchensinternational.co.uk

## Sheffield

**DIRECT KITCHENS**  
1 Ecclesfield Road  
Chapelton  
Sheffield  
S35 1TD  
Tel: 0114 2400660  
Fax: 0114 2576175

## Shropshire

**david hartill**  
the finest bespoke fitted & freestanding  
kitchens & bedrooms  
established 23 years  
12 abbey foregate, shrewsbury  
tel: 01743 247433  
or freephone 0800 0267433  
www.davidhartill.co.uk  
email: showroom@davidhartill.co.uk

## Somerset

**BRADBURY'S**  
the ALNO store  
1 Bond Street South,  
Bristol BS1 3EN  
0117 941 4179  
www.bradburysltd.co.uk

## Suffolk

**KSL**  
Kitchens, Bathrooms and Bedrooms  
Churchfield Business Park,  
Churchfield Road,  
Sudbury, Suffolk CO10 2YF  
www.kslsudbury.co.uk  
01787 378250

**anglia FACTORS**  
KITCHENS, BATHROOMS  
BEDROOMS, HOME OFFICES  
BESPOKE INTERIORS  
www.angliafactors.co.uk  
01473 610 192

## Surrey

**THYME KITCHENS**  
Individual Wood Kitchens  
The Old Post Office,  
Shere, Guildford,  
Surrey GU5 9HF  
Telephone: 01483 203737  
Fax: 01483 202088

## Warwickshire

**MODERN HOMES**  
Specialists in the Design Manufacture  
and Installation of Custom Built Fitted  
Kitchens, Bedrooms and Bathrooms  
37 Longfield Road  
Sydenham Farm Estate  
Leamington Spa  
Tel: 01926 883338  
Freephone No: 0500 011 320  
Fax: 01926 886329

## West Lothian

**kitchens INTERNATIONAL**  
Broxburn Showroom  
11 Youngs Rd, East Mains Industrial  
Estate, Broxburn, EH52 5LY.  
01506 862 780  
www.kitchensinternational.co.uk

## West Sussex

**HKS**  
Kitchens ♦ Bedrooms ♦ Bathrooms ♦ Studies  
104 South Road  
Haywards Heath  
01444 452222  
www.hks-uk.com

## Yorkshire

**DC Interiors**  
Bespoke Kitchens, Bedrooms & Studies  
MALTBY, ROTHERHAM  
TEL: 01709 790145  
EDENTHORPE, DONCASTER  
TEL/FAX: 01302 886790

**CHANTRY KITCHENS**  
classic • modern • bespoke  
York YO26 7QF  
Tel: 01423 358882  
Harrogate HG1 2DR  
Tel: 01423 522275  
visit our website:  
www.chantrykitchens.co.uk

**Hometown Designs Ltd**  
Award winning showroom  
Kitchens – Bedrooms – Bathrooms  
Offices & Studies  
127 Bawtry Road, Wickersley,  
Rotherham S66 2BW  
Tel: 01709 548886  
Visit our website  
www.hometowndesigns.co.uk

To advertise in  
the KBSA Retailer  
Directory call  
Victoria Jennings  
01206 851117





# Malene BIRGER

The stylish Danish designer tells us all about her love of art, design and entertaining, as well as her recent move from fashion to interiors

INTERVIEW SUSAN SPRINGATE | PORTRAIT LIS KASPER BANG

Malene Birger is the much-loved Danish fashion designer favoured by the Duchess of Cambridge, among many, who is now turning her hand to interiors. Malene co-founded the label Day Birger et Mikkelsen in 1997, before creating her own brand By Malene Birger six years later. She sold her shares in 2010 but stayed on as creative director until last year. She has moved house 28 times since she was 20, most recently from Mallorca to London, where she lives in an elegant apartment overlooking a Kensington garden square with her husband.

**Why the move into interiors?** I have always had a deep passion for art and interiors and have often expressed myself through interiors. My goal now is to work with projects within hotels, restaurants and other busy spaces, where a personal style is welcome. Too many things look too much the same.

**Describe your interior style?** My style is timeless and eclectic. I like to combine the past, the present and the future – and I love the black and white universe.

**What inspires you?** I am very inspired by furniture and decorative objects from Arabia, Africa, India and Syria, where the handcraft is outstanding. I like to style these pieces – which are like jewels in my home – with modern objects and graphic art. Contrasts are a must.

**Describe your dream kitchen?** A big cooker, big fridge and a table with enough space for friends. The kitchen is one of the most important spaces in a house so it must be very cosy and welcoming. To eat and drink are the basics in life, and both must be enjoyed in a comfortable place. Good music is important – and tea lights!

**Why do you think the Nordic style does so well in UK?** While I don't consider myself Nordic in style – apart perhaps in my love of white walls – I can see its appeal in that it is very practical, with simple organic cuts and clean lines.

**Do you have any signature looks when you are entertaining?** I mix and match old and new pieces including plates, glasses, bowls and cutlery and often use red onions as decorations, plenty of them spread around the table. I place a glass with flowers at each plate, and a tea light too. Every person gets their own set up.

**Any tips on creating a bathroom with style and elegance?** I hang up pictures, and add sculptures and artistic objects. I also love carpets and cosy lighting.

**Why so little colour in your schemes?** I feel calm and in peace in neutral tones and love the full contrast of dark and light. It's easier to redecorate this way as coloured cushions or other textiles can be added anytime. I do have blue and some dark red tones in my home today.

**How do you display your art?** I have always had picture walls in all my rooms. I mostly hang paintings and pictures in big groups on one wall – I think a home without pictures is missing personality.

**Were you always into design?** Yes, always. I was driving my parents crazy as a kid, changing and redecorating my room, and rearranging and painting the furniture.

**Where will you move to next?** I would love to live in Istanbul for a short period but I would also love to move to the English countryside and decorate a big mansion house. [ekbbbirger1962.com](http://ekbbbirger1962.com)



**A view into Malene Birger's homes and interiors styles:**

**Above top** Her kitchen at The Finca in S'Arraco, Mallorca (Photo Gori Salva)

**Above left** The bathroom at the apartment in Palma de Mallorca (Photo Birgitta Wolfgang Drejer) **Above right** Malene's bedroom in Palma de Mallorca (Photo Birgitta Wolfgang Drejer) **Below** The couple's kitchen at the apartment in Palma de Mallorca (Photo Birgitta Wolfgang Drejer).

All images are from Malene Birger's latest book 'Move and Work'



# Quooker® FUSION

HOT, COLD AND 100°C BOILING WATER FROM A SINGLE TAP



A single tap for hot, cold and 100°C boiling water saving time, water, energy and money. A 100% Dutch invention taking over the world.

See a working Quooker in over 1,000 kitchen showrooms nationwide.

Water Saving



Safe



Time Saving



Energy Efficient



## THE NEW KITCHEN MUST-HAVE

Ultra-safe, super-efficient and available in eight tap designs and three finishes.



TO FIND YOUR NEAREST SHOWROOM  
**CALL NOW 0808 102 1941**  
or visit [www.quooker.co.uk/find-a-dealer](http://www.quooker.co.uk/find-a-dealer)

[www.quooker.co.uk](http://www.quooker.co.uk)  
[info@quooker.co.uk](mailto:info@quooker.co.uk)

**Quooker®**  
THE BOILING-WATER TAP



# ALNO



DESIGN

INNOVATION

QUALITY

New ALNOSTAR PURE with special touch super matt laminate, feeling silky-smooth and eliminating unpleasant fingerprints. Part of the new 2015 **ALNO** kitchen collection.

**Winter Sale Now On. Limited Period Only.**

Visit your nearest ALNO retailer or John Lewis store for more details.



ALNO kitchens are sold through John Lewis Department stores and selected Specialists nationwide.

Alton (Hampshire), Ayr, Balham (Greater London), Beaconsfield, Blackburn, Bristol, Bury St Edmunds, Chelmsford, Chiswick, Croydon (Greater London), Dorking, Eastbourne, Exeter, Findon (West Sussex), Harrogate, Horndean (Hampshire), Leeds, London W1, Maldon, Manchester (Altrincham, Prestwich), Newcastle under Lyme, Newport, Northampton, Nottingham, Pinner, Reading, Sevenoaks, St Albans, Sutton Coldfield, Surbiton (Greater London), Ulverston (Cumbria), Wirral, York.

For a copy of our brochure simply go on-line or call: 08700 433742

[www.alnokitchens.co.uk](http://www.alnokitchens.co.uk)



reddot design award  
winner 2010